

## Allgemeine Informationen

<b>Katalog-Nr.:</b> 13391-1-AP	<b>GenBank-Zugangsnummer:</b> BC034750	<b>Reinigungsmethode:</b> Antigen-Affinitätsreinigung
<b>Größe:</b> 150ul, Konzentration: 400 µg/ml von Nanodrop und 367 µg/ml durch die Bradford-Methode mit BSA als Standard;	<b>GeneID (NCBI):</b> 3960	<b>Empfohlene Verdünnungen:</b> WB 1:1000-1:5000 IHC 1:20-1:200 IF 1:50-1:500
<b>Wirt:</b> Kaninchen	<b>Vollständiger Name:</b> lectin, galactoside-binding, soluble, 4	
<b>Isotyp:</b> IgG	<b>Berechnete Masse:</b> 323 aa, 36 kDa	
<b>Immunogen Katalognummer:</b> AG4049	<b>Beobachtete Masse:</b> 36 kDa	

## Anwendungen

<b>Geprüfte Anwendungen:</b> FC, IF, IHC, WB, ELISA	<b>Positivkontrollen:</b> WB : HT-29-Zellen, COLO 320-Zellen IHC : humanes Mammakarzinomgewebe, IF : COLO 320-Zellen,
<b>Getestete Reaktivität:</b> Human, Maus, Ratte	
<b>Hinweis-IHC: Antigenmaskierung mit TE-Puffer pH 9,0 empfohlen. (*) Wahlweise kann die Antigenmaskierung auch mit Citratpuffer pH 6,0 erfolgen.</b>	

## Hintergrundinformationen

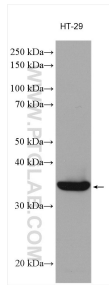
Galectins are a family of animal lectins defined by shared characteristic amino-acid sequences and affinity for  $\beta$ -galactose-containing oligosaccharides (PMID: 8063692). Galectin-4 contains two carbohydrate recognition domains (CRDs) and is expressed in the epithelium of oral mucosa, esophagus, and intestinal and colonic mucosa (PMID: 15546874; 15115909). Aberrant expression of galectin-4 has been reported in several cancers.

## Lagerung

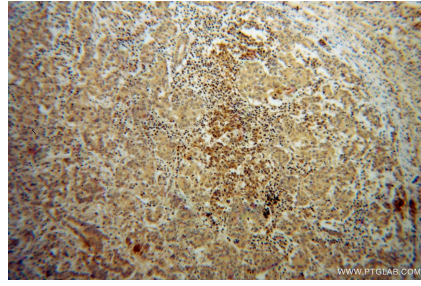
**Lagerungsbedingungen:**  
Bei -20°C lagern. Nach dem Versand ein Jahr lang stabil  
**Lagerungspuffer:**  
PBS mit 0.02% Natriumazid und 50% Glycerin pH 7.3.  
**Aliquotieren ist nicht notwendig bei -20°C Lagerung**

\*\*\* 20ul-Größen enthalten 0.1% BSA

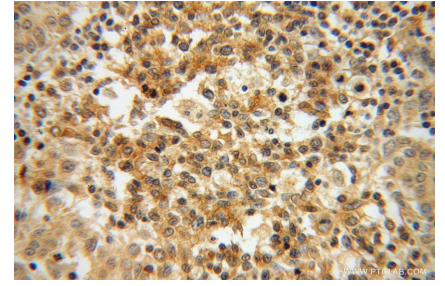
## Ausgewählte Validierungsdaten



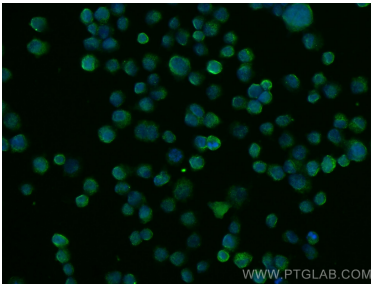
HT-29 cells were subjected to SDS PAGE followed by western blot with 13391-1-AP (Galectin-4 antibody) at dilution of 1:3000 incubated at room temperature for 1.5 hours.



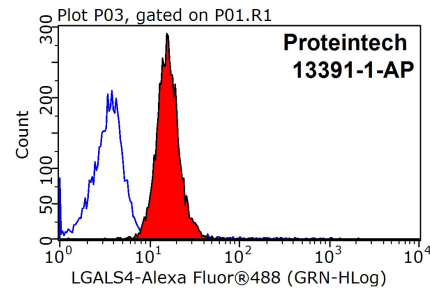
Immunohistochemical analysis of paraffin-embedded human breast cancer using 13391-1-AP (Galectin-4 antibody) at dilution of 1:50 (under 10x lens).



Immunohistochemical analysis of paraffin-embedded human breast cancer using 13391-1-AP (Galectin-4 antibody) at dilution of 1:50 (under 40x lens).



Immunofluorescent analysis of (4% PFA) fixed COLO 320 cells using Galectin-4 antibody (13391-1-AP) at dilution of 1:200 and CoraLite@488-Conjugated AffiniPure Goat Anti-Rabbit IgG(H+L).



1x10<sup>6</sup> MCF-7 cells were stained with 0.2ug Galectin-4 antibody (13391-1-AP, red) and control antibody (blue). Fixed with 90% MeOH blocked with 3% BSA (30 min). Alexa Fluor 488-conjugated AffiniPure Goat Anti-Rabbit IgG(H+L) with dilution 1:1500.