

Nur für Forschungszwecke

GPR161 Polyklonaler Antikörper

Katalog-Nr.:13398-1-AP

Vorgestelltes Produkt

34 Publikationen



Allgemeine Informationen

Katalog-Nr.: 13398-1-AP	GenBank-Zugangsnummer: BC028163	Reinigungsmethode: Antigen-Affinitätsreinigung
Größe: 150ul, Konzentration: 600 µg/ml von Nanodrop;	GeneID (NCBI): 23432	Empfohlene Verdünnungen: WB 1:500-1:2000 IF 1:50-1:500
Wirt: Kaninchen	Vollständiger Name: G protein-coupled receptor 161	
Isotyp: IgG	Berechnete Masse: 529 aa, 59 kDa	
Immunogen Katalognummer: AG4221	Beobachtete Masse: 59-70 kDa	

Anwendungen

Geprüfte Anwendungen: IF, WB, ELISA	Positivkontrollen: WB : HEK-293-Zellen, HeLa-Zellen, HepG2-Zellen IF : hTERT-RPE1-Zellen,
In Publikationen genannte Anwendungen: IF, WB	
Getestete Reaktivität: Human, Maus, Ratte	
Zitierte Arten: Hausschwein, Huhn, Human, Maus, Zebrafisch	

Hintergrundinformationen

GPR161 (also known as RE2) is an orphan G protein-coupled receptor and plays important roles in the Hh pathway. In the absence of Hh signals, GPR161 localizes to primary cilia and keeps the downstream GLI transcription factors in their repressor forms (PMID: 26305592). Ciliary localization of GPR161 requires TULP3 and the IFT-A complex. In presence of SHH, GPR161 is removed from primary cilia and is internalized into recycling endosomes, preventing its activity and allowing activation of the Shh signaling. GPR161 has a calculated molecular mass of 59 kDa. The 70-kDa band detected by this antibody probably represents a modified version of GPR161 (PMID: 18250320).

Bemerkenswerte Veröffentlichungen

Verfasser	Pubmed ID	Journal	Anwendung
Xin Zong	32914682	RNA Biol	WB
Swapnil Rohidas Shinde	33185668	J Cell Biol	IF
Shichao Duan	33241915	EMBO J	WB,IF

Lagerung

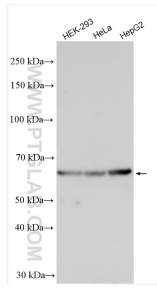
Lagerungsbedingungen:
Bei -20°C lagern. Nach dem Versand ein Jahr lang stabil
Lagerungspuffer:
PBS mit 0.02% Natriumazid und 50% Glycerin pH 7.3.
Aliquotieren ist nicht notwendig bei -20°C Lagerung

*** 20ul-Größen enthalten 0.1% BSA

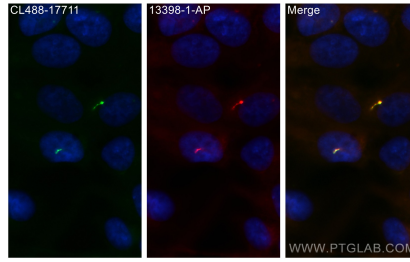
For technical support and original validation data for this product please contact:
T: 1 (888) 4PTGLAB (1-888-478-4522) (toll free in USA), or 1(312) 455-8498 (outside USA)
E: proteintech@ptglab.com
W: ptglab.com

This product is exclusively available under Proteintech Group brand and is not available to purchase from any other manufacturer.

Ausgewählte Validierungsdaten



Various lysates were subjected to SDS PAGE followed by western blot with 13398-1-AP (GPR161 antibody) at dilution of 1:1000 incubated at room temperature for 1.5 hours.



Immunofluorescent analysis of (-20°C Methanol) fixed hTERT-RPE1 cells using GPR161 antibody (13398-1-AP) at dilution of 1:200 and CoraLite® 594-Conjugated AffiniPure Goat Anti-Rabbit IgG(H+L), CoraLite® 488 ARL13B antibody (CL488-17711, green).