

Allgemeine Informationen

| | | |
|---|--|--|
| Katalog-Nr.: 13403-1-AP | GenBank-Zugangsnummer: BC028155 | Reinigungsmethode: Antigen-Affinitätsreinigung |
| Größe: 150ul , Konzentration: 400 µg/ml von Nanodrop; | GeneID (NCBI): 3835 | Empfohlene Verdünnungen: WB 1:500-1:2000 IP 0.5-4.0 ug für IP und 1:200-1:1000 für WB IHC 1:20-1:200 |
| Wirt: Kaninchen | Vollständiger Name: kinesin family member 22 | |
| Isotyp: IgG | Berechnete Masse: 665 aa, 73 kDa | |
| Immunogen Katalognummer: AG4254 | Beobachtete Masse: 68-73 kDa | |

Anwendungen

| | |
|---|--|
| Geprüfte Anwendungen: IHC, IP, WB, ELISA | Positivkontrollen: |
| In Publikationen genannte Anwendungen: IF, IHC, WB | WB : Jurkat-Zellen, humanes Herzgewebe, MKN-45-Zellen, T-47D-Zellen |
| Getestete Reaktivität: Human, Maus, Ratte | IP : HeLa-Zellen, |
| Zitierte Arten: Human, Maus | IHC : humanes Zervixkarzinomgewebe, humanes Mammakarzinomgewebe |
| Hinweis-IHC: Antigenmaskierung mit TE-Puffer pH 9,0 empfohlen. (*) Wahlweise kann die Antigenmaskierung auch mit Citratpuffer pH 6,0 erfolgen. | |

Hintergrundinformationen

KIF22, also known as KID (kinesin-like DNA-binding protein), is a kinesin-like DNA-binding protein known to be involved in chromosome movement during mitosis. KIF22 is a nuclear protein regulated by SIAH-1, whose level fluctuate in a cell cycle-dependent manner, increasing during pre-mitotic phases and greatly decreasing during mitosis. KIF22 localizes to the nucleus of the interphase cells upon entry into mitosis and displays some punctate cytoplasmic staining. Defects in KIF22 are the cause of spondyloepimetaphyseal dysplasia with joint laxity, type 2 (SEMDJL2).

Bemerkenswerte Veröffentlichungen

| Verfasser | Pubmed ID | Journal | Anwendung |
|-------------------|-----------|-------------------|-----------|
| Sara Bizzotto | 29229923 | Sci Rep | IF |
| Yan Guang-Rong GR | 22887948 | Proteomics | WB |
| Ze-Yuan Yu | 32187050 | Chin Med J (Engl) | WB,IHC |

Lagerung

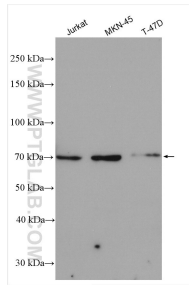
Lagerungsbedingungen:
Bei -20°C lagern. Nach dem Versand ein Jahr lang stabil
Lagerungspuffer:
PBS mit 0.02% Natriumazid und 50% Glycerin pH 7.3.
 Aliquotieren ist nicht notwendig bei -20°C Lagerung

*** 20ul-Größen enthalten 0.1% BSA

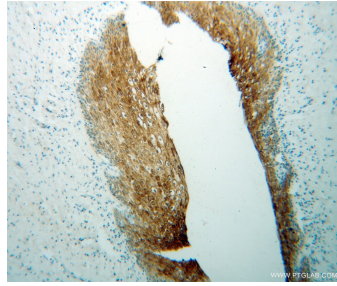
For technical support and original validation data for this product please contact:
 T: 1 (888) 4PTGLAB (1-888-478-4522) (toll free in USA), or 1(312) 455-8498 (outside USA)
 E: proteintech@ptglab.com
 W: ptglab.com

This product is exclusively available under Proteintech Group brand and is not available to purchase from any other manufacturer.

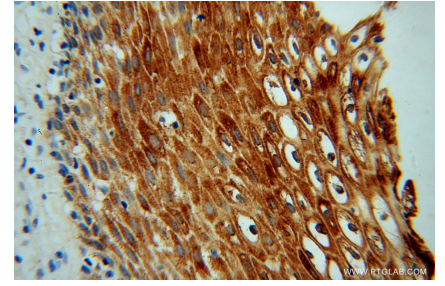
Ausgewählte Validierungsdaten



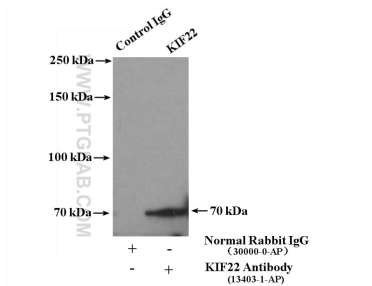
Various lysates were subjected to SDS PAGE followed by western blot with 13403-1-AP (KIF22 antibody) at dilution of 1:1000 incubated at room temperature for 1.5 hours.



Immunohistochemical analysis of paraffin-embedded human cervical cancer using 13403-1-AP (KIF22 antibody) at dilution of 1:100 (under 10x lens).



Immunohistochemical analysis of paraffin-embedded human cervical cancer using 13403-1-AP (KIF22 antibody) at dilution of 1:100 (under 40x lens).



IP Result of anti-KIF22 (IP:13403-1-AP, 4ug; Detection:13403-1-AP 1:300) with HeLa cells lysate 4000ug.