

Nur für Forschungszwecke

Occludin Polyklonaler Antikörper

Katalog-Nr.:13409-1-AP

Vorgestelltes Produkt

313 Publikationen



Allgemeine Informationen

Katalog-Nr.:

13409-1-AP

Größe:

150ul, Konzentration: 900 µg/ml von

Nanodrop;

Wirt:

Kaninchen

Isotyp:

IgG

Immunogen Katalognummer:

AG4057

GenBank-Zugangsnummer:

BC029886

GeneID (NCBI):

4950

Vollständiger Name:

occludin

Berechnete Masse:

522 aa, 59 kDa

Beobachtete Masse:

59 kDa

Reinigungsmethode:

Antigen-Affinitätsreinigung

Empfohlene Verdünnungen:

WB 1:2000-1:16000

IP 0.5-4.0 µg für IP und 1:500-1:1000

für WB

IHC 1:50-1:800

Anwendungen

Geprüfte Anwendungen:

FC, IHC, IP, WB, ELISA

In Publikationen genannte Anwendungen:

IHC, IP, WB

Getestete Reaktivität:

Human, Maus, Ratte

Zitierte Arten:

Hausschwein, Huhn, Human, Hund, Maus, Ratte, Rind

Hinweis-IHC: Antigenmaskierung mit TE-

Puffer pH 9,0 empfohlen. (*) Wahlweise

kann die Antigenmaskierung auch mit

Citratpuffer pH 6,0 erfolgen.

Positivkontrollen:

WB: A431-Zellen, humanes Lebergewebe, humanes

Nierengewebe, Maus-Kolongewebe,

Mauslebergewebe, Mausnierengewebe,

Rattenlebergewebe, Rattennierengewebe

IP: Mauslebergewebe,

IHC: humanes Mammakarzinomgewebe,

Hintergrundinformationen

Occludin is an integral membrane protein located at the tight junction. It is a tetraspanin protein with four transmembrane domains, intracellular N and C termini and two extracellular loops. Occludin plays a role in the formation and regulation of the tight junction paracellular permeability barrier. Occludin can exist in different isoforms, owing to modifications at the posttranscriptional and posttranslational levels, the monomeric occludin migrates as 53-65 kDa on SDS-PAGE (PMID: 22083955; 19457074).

Bemerkenswerte Veröffentlichungen

Verfasser	Pubmed ID	Journal	Anwendung
Biqi Han	36209609	J Hazard Mater	WB
Qi-Le Zuo	34590865	J Agric Food Chem	IHC
Cheng-Kuei Wu	36175474	Sci Rep	WB

Lagerung

Lagerungsbedingungen:

Bei -20°C lagern. Nach dem Versand ein Jahr lang stabil

Lagerungspuffer:

PBS mit 0.02% Natriumazid und 50% Glycerin pH 7.3.

Aliquotieren ist nicht notwendig bei -20°C Lagerung

*** 20ul-Größen enthalten 0.1% BSA

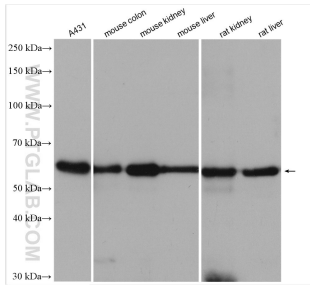
For technical support and original validation data for this product please contact:

T: 1 (888) 4PTGLAB (1-888-478-4522) (toll free in USA), or 1(312) 455-8498 (outside USA)

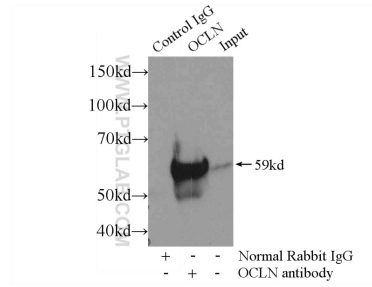
E: proteintech@ptglab.com
W: ptglab.com

This product is exclusively available under Proteintech Group brand and is not available to purchase from any other manufacturer.

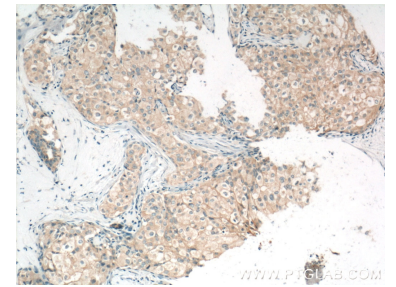
Ausgewählte Validierungsdaten



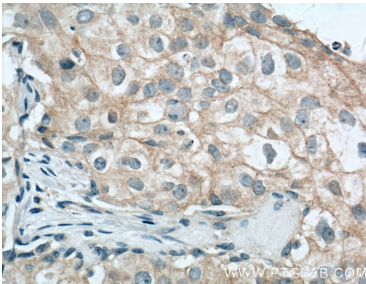
Various lysates were subjected to SDS PAGE followed by western blot with 13409-1-AP (Occludin antibody) at dilution of 1:8000 incubated at room temperature for 1.5 hours.



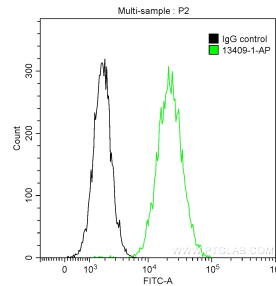
IP Result of anti-Occludin (IP:13409-1-AP, 3ug; Detection:13409-1-AP 1:500) with mouse liver tissue lysate 6400ug.



Immunohistochemical analysis of paraffin-embedded human breast cancer tissue slide using 13409-1-AP (Occludin Antibody) at dilution of 1:800 (under 10x lens). Heat mediated antigen retrieval with Tris-EDTA buffer (pH 9.0).



Immunohistochemical analysis of paraffin-embedded human breast cancer tissue slide using 13409-1-AP (Occludin Antibody) at dilution of 1:800 (under 40x lens). Heat mediated antigen retrieval with Tris-EDTA buffer (pH 9.0).



1X10⁶ A431 cells were stained with 0.2 ug Anti-Human Occludin (13409-1-AP) and Coralite®488-Conjugated AffiniPure Goat Anti-Rabbit IgG(H+L) at dilution 1:1000 (green), or stained with 0.2 ug isotype control antibody and Coralite®488-Conjugated AffiniPure Goat Anti-Rabbit IgG(H+L) at dilution 1:1000 (black). Cells were fixed with 90% MeOH.