

Nur für Forschungszwecke

RAB27B Polyklonaler Antikörper

Katalog-Nr.: 13412-1-AP

Vorgestelltes Produkt

36 Publikationen



Allgemeine Informationen

Katalog-Nr.: 13412-1-AP	GenBank-Zugangsnummer: BC027474	Reinigungsmethode: Antigen-Affinitätsreinigung
Größe: 150ul, Konzentration: 750 µg/ml von Nanodrop;	GeneID (NCBI): 5874	Empfohlene Verdünnungen: WB 1:500-1:2000 IHC 1:50-1:500 IF 1:50-1:500
Wirt: Kaninchen	Vollständiger Name: RAB27B, member RAS oncogene family	
Isotyp: IgG	Berechnete Masse: 218 aa, 25 kDa	
Immunogen Katalognummer: AG4064	Beobachtete Masse: 25-30 kDa	

Anwendungen

Geprüfte Anwendungen:

IF, IHC, WB, ELISA

In Publikationen genannte Anwendungen:

IF, IHC, WB

Getestete Reaktivität:

Human, Maus, Ratte

Zitierte Arten:

Human, Hund, Maus, Ratte

Hinweis-IHC: Antigenmaskierung mit TE-Puffer pH 9,0 empfohlen. (*) Wahlweise kann die Antigenmaskierung auch mit Citratpuffer pH 6,0 erfolgen.

Positivkontrollen:

WB: Rattenmilzgewebe, A375-Zellen, DU 145-Zellen, MCF-7-Zellen, PC-3-Zellen

IHC: humanes Pankreaskarzinomgewebe, humanes Hodengewebe, humanes Kolonkarzinomgewebe, humanes Leberkarzinomgewebe, humanes Mammakarzinomgewebe, humanes Ösophaguskarzinomgewebe, humanes Prostatakarzinomgewebe

IF: HeLa-Zellen,

Hintergrundinformationen

The Rab27 GTPase subfamily consists of two closely related homologs, Rab27a and Rab27b. Northern blot analysis revealed that Rab27b is expressed significantly only in testis, in which the predominant transcript was 1.4 kb in size. An 8-kb mRNA of unknown origin was detected in many tissues. Rab27b is associated with tubulovesicle membranes in the parietal cell and Rab27b may play a role in stimulation-associated membrane recruitment and gastric acid secretion. Rab27b is recently reported as a marker for breast cancer progression. It regulates invasive growth and metastasis in ER-positive breast cancer cell lines, and increased expression is associated with poor prognosis in humans.

Bemerkenswerte Veröffentlichungen

Verfasser	Pubmed ID	Journal	Anwendung
Jian Guo	32989094	J Immunol	WB
Xueqiang Peng	32949647	Biochim Biophys Acta Mol Cell Res	WB
Hiroshi Gomi	28914590	J Histochem Cytochem	WB, IHC

Lagerung

Lagerungsbedingungen:

Bei -20°C lagern. Nach dem Versand ein Jahr lang stabil

Lagerungspuffer:

PBS mit 0.02% Natriumazid und 50% Glycerin pH 7.3.

Aliquotieren ist nicht notwendig bei -20°C Lagerung

*** 20ul-Größen enthalten 0.1% BSA

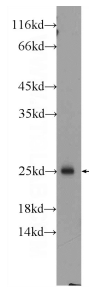
For technical support and original validation data for this product please contact:

T: 1 (888) 4PTGLAB (1-888-478-4522) (toll free in USA), or 1(312) 455-8498 (outside USA)

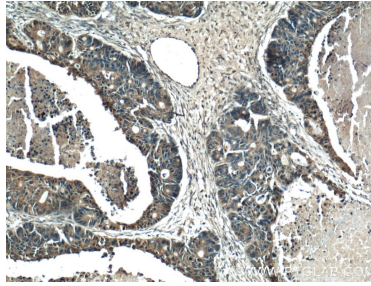
E: proteintech@ptglab.com
W: ptglab.com

This product is exclusively available under Proteintech Group brand and is not available to purchase from any other manufacturer.

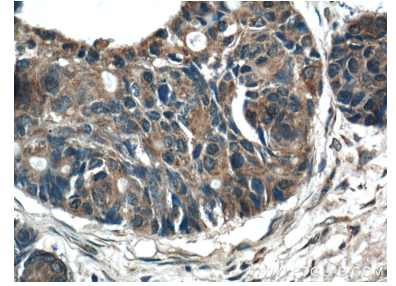
Ausgewählte Validierungsdaten



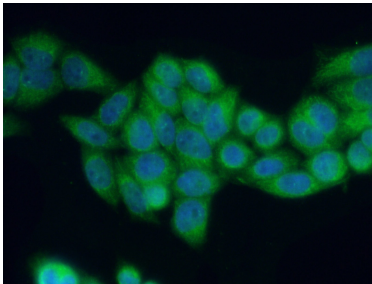
rat spleen tissue were subjected to SDS PAGE followed by western blot with 13412-1-AP (RAB27B Antibody) at dilution of 1:1000 incubated at room temperature for 1.5 hours.



Immunohistochemical analysis of paraffin-embedded human pancreas cancer tissue slide using 13412-1-AP (RAB27B Antibody) at dilution of 1:200 (under 10x lens).



Immunohistochemical analysis of paraffin-embedded human pancreas cancer tissue slide using 13412-1-AP (RAB27B Antibody) at dilution of 1:200 (under 40x lens).



Immunofluorescent analysis of (4% PFA) fixed HeLa cells using 13412-1-AP (RAB27B antibody) at dilution of 1:50 and Alexa Fluor 488-conjugated AffiniPure Goat Anti-Rabbit IgG(H+L).