

Nur für Forschungszwecke

PPP3CA Polyklonaler Antikörper

Katalog-Nr.:13422-1-AP

10 Publikationen



Allgemeine Informationen

Katalog-Nr.:
13422-1-AP

Größe:
150ul, Konzentration: 750 µg/ml von
Nanodrop und 500 µg/ml durch die
Bradford-Methode mit BSA als
Standard;

Wirt:
Kaninchen

Isotyp:
IgG

Immunogen Katalognummer:
AG4203

GenBank-Zugangsnummer:
BC025714

GeneID (NCBI):
5530

Vollständiger Name:
protein phosphatase 3 (formerly 2B),
catalytic subunit, alpha isoform

Berechnete Masse:
59 kDa

Beobachtete Masse:
59 kDa

Reinigungsmethode:
Antigen-Affinitätsreinigung

Empfohlene Verdünnungen:
WB 1:1000-1:8000
IP 0.5-4.0 µg für IP und 1:500-1:2000
für WB
IHC 1:50-1:500
IF 1:20-1:200

Anwendungen

Geprüfte Anwendungen:
FC, IF, IHC, IP, WB, ELISA

In Publikationen genannte Anwendungen:
IF, WB

Getestete Reaktivität:
Human, Maus

Zitierte Arten:
Huhn, Human, Maus

Hinweis-IHC: Antigendemaskierung mit TE-Puffer pH 9,0 empfohlen. (*) Wahlweise kann die Antigendemaskierung auch mit Citratpuffer pH 6,0 erfolgen.

Positivkontrollen:

WB: Maus-Skelettmuskelgewebe, Mausherzgewebe, SH-SY5Y-Zellen

IP: Mausherzgewebe,

IHC: humanes Kolonkarzinomgewebe, humanes Zervixkarzinomgewebe

IF: SH-SY5Y-Zellen,

Hintergrundinformationen

PPP3CA, also called calcineurin A α , is the only serine/threonine protein phosphatase under the control of Ca $^{2+}$ /calmodulin, and plays a critical role in the coupling of Ca $^{2+}$ signals to cellular responses. Ca $^{2+}$ signaling plays a central role in hypertrophic growth of cardiac and skeletal muscle in response to mechanical load and a variety of signals. Therefore, PPP3CA plays an important role in muscle differentiation, especially in muscle fiber type conversion. It is also involved in osteoclast regulation, regulating bone formation through an effect on osteoblast differentiation.

Bemerkenswerte Veröffentlichungen

Verfasser	Pubmed ID	Journal	Anwendung
Armagan Caner	34580765	J Membr Biol	WB
Xiju He	28526717	Proc Natl Acad Sci U S A	WB
Yuetao Wen	28299629	Neurochem Res	WB,IF

Lagerung

Lagerungsbedingungen:

Bei -20°C lagern. Nach dem Versand ein Jahr lang stabil

Lagerungspuffer:

PBS mit 0.02% Natriumazid und 50% Glycerin pH 7.3.

Aliquotieren ist nicht notwendig bei -20°C Lagerung

*** 20ul-Größen enthalten 0.1% BSA

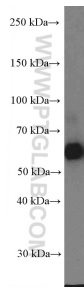
For technical support and original validation data for this product please contact:

T: 1 (888) 4PTGLAB (1-888-478-4522) (toll free in USA), or 1(312) 455-8498 (outside USA)

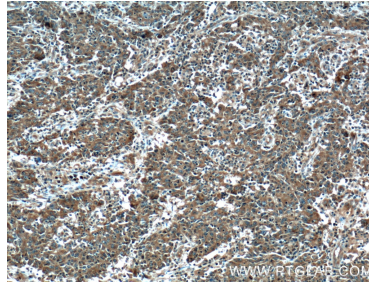
E: proteintech@ptglab.com
W: ptglab.com

This product is exclusively available under Proteintech Group brand and is not available to purchase from any other manufacturer.

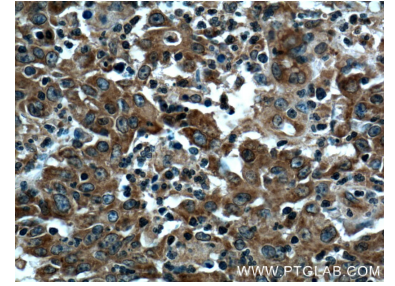
Ausgewählte Validierungsdaten



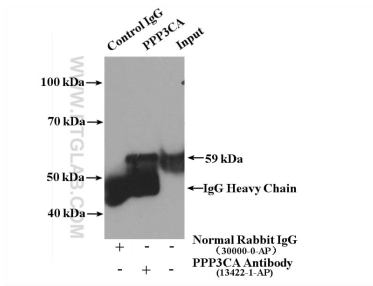
mouse skeletal muscle tissue were subjected to SDS PAGE followed by western blot with 13422-1-AP (PPP3CA Antibody) at dilution of 1:4000 incubated at room temperature for 1.5 hours.



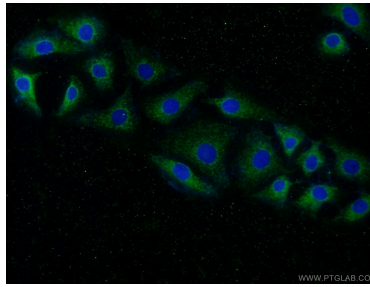
Immunohistochemical analysis of paraffin-embedded human colon cancer tissue slide using 13422-1-AP (PPP3CA Antibody) at dilution of 1:200 (under 10x lens). Heat mediated antigen retrieval with Tris-EDTA buffer (pH 9.0).



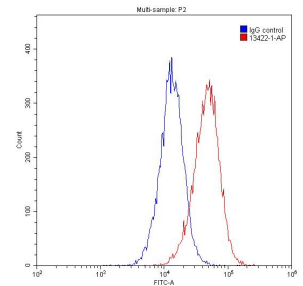
Immunohistochemical analysis of paraffin-embedded human colon cancer tissue slide using 13422-1-AP (PPP3CA Antibody) at dilution of 1:200 (under 40x lens). Heat mediated antigen retrieval with Tris-EDTA buffer (pH 9.0).



IP result of anti-PPP3CA (IP:13422-1-AP, 4ug; Detection:13422-1-AP 1:1000) with mouse heart tissue lysate 4000 ug.



Immunofluorescent analysis of (-20°C Ethanol) fixed SH-SY5Y cells using 13422-1-AP (PPP3CA antibody) at dilution of 1:50 and Alexa Fluor 488-conjugated AffiniPure Goat Anti-Rabbit IgG(H+L).



1x10⁶ HeLa cells were stained with 0.20ug PPP3CA antibody (13422-1-AP, red) and control antibody (blue). Fixed with 90% MeOH.