

## Allgemeine Informationen

## Katalog-Nr.:

13436-1-AP

## Größe:

150ul , Konzentration: 850 µg/ml von Nanodrop und 330 µg/ml durch die Bradford-Methode mit BSA als Standard;

## Wirt:

Kaninchen

## Isotyp:

IgG

## Immunogen Katalognummer:

AG4242

## GenBank-Zugangsnummer:

BC033842

## GeneID (NCBI):

57509

## Vollständiger Name:

mitochondrial tumor suppressor 1

## Berechnete Masse:

51 kDa, 141 kDa

## Beobachtete Masse:

40-48 kDa, 80 kDa, 110-120 kDa, 270-280 kDa

## Reinigungsmethode:

Antigen-Affinitätsreinigung

## Empfohlene Verdünnungen:

WB 1:500-1:1000  
 IP 0.5-4.0 µg für IP und 1:500-1:1000 für WB  
 IHC 1:300-1:1200  
 IF 1:20-1:200

## Anwendungen

## Geprüfte Anwendungen:

IF, IHC, IP, WB, ELISA

## In Publikationen genannte Anwendungen:

CoIP, IF, WB

## Getestete Reaktivität:

Human, Maus, Ratte

## Zitierte Arten:

Human, Maus

**Hinweis-IHC: Antigendemaskierung mit TE-Puffer pH 9,0 empfohlen. (\*) Wahlweise kann die Antigendemaskierung auch mit Citratpuffer pH 6,0 erfolgen.**

## Positivkontrollen:

**WB** : Jurkat-Zellen, humanes Hirngewebe, K-562-Zellen, Maushirngewebe

**IP** : Maushirngewebe,

**IHC** : humanes Mammakarzinomgewebe, humanes Schilddrüsenkarzinomgewebe

**IF** : PC-3-Zellen,

## Hintergrundinformationen

MTUS1, also named as ATBP, ATIP, GK1, KIAA1288 and MTS1, belongs to the MTUS1 family. It cooperates with AGTR2 to inhibit ERK2 activation and cell proliferation. MTUS1 may be required for AGTR2 cell surface expression. Together with PTPN6, induces UBE2V2 expression upon angiotensin-II stimulation. Isoform 1 inhibits breast cancer cell proliferation, delays the progression of mitosis by prolonging metaphase and reduces tumor growth. MTUS1 up-regulation during cellular transition from proliferation to quiescence and differentiation. It is a potential tumor suppressor gene located at chromosome 8p21.3.22, near marker D8S254. According to the functional data and intracellular localization, MTUS1 also named as mitochondrial tumor suppressor gene 1 (MTSG1). One main feature common to all ATIP members is the presence of a large C-terminal coiled-coil domain that allows homo- and hetero-dimerization of these proteins. (PMID:12692079, 15123706). The antibody can recognize all the isoforms except isoform 5(85-90 kDa). The antibody tested HomoDimer isoforms (80kd/110-120/280kd) in Jurkat cell.

## Bemerkenswerte Veröffentlichungen

| Verfasser    | Pubmed ID | Journal            | Anwendung  |
|--------------|-----------|--------------------|------------|
| Ruili Dang   | 34529881  | Aging Cell         | WB         |
| Yinfang Wang | 27789289  | J Mol Cell Cardiol | WB,IF      |
| Yinfang Wang | 29558204  | FASEB J            | WB,IF,CoIP |

## Lagerung

## Lagerungsbedingungen:

Bei -20°C lagern. Nach dem Versand ein Jahr lang stabil

## Lagerungspuffer:

PBS mit 0.02% Natriumazid und 50% Glycerin pH 7.3.

Aliquotieren ist nicht notwendig bei -20°C Lagerung

\*\*\* 20ul-Größen enthalten 0.1% BSA

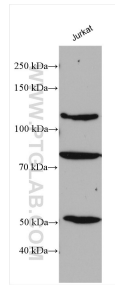
For technical support and original validation data for this product please contact:

T: 1 (888) 4PTGLAB (1-888-478-4522) (toll free in USA), or 1(312) 455-8498 (outside USA)

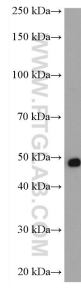
E: [proteintech@ptglab.com](mailto:proteintech@ptglab.com)  
 W: [ptglab.com](http://ptglab.com)

This product is exclusively available under Proteintech Group brand and is not available to purchase from any other manufacturer.

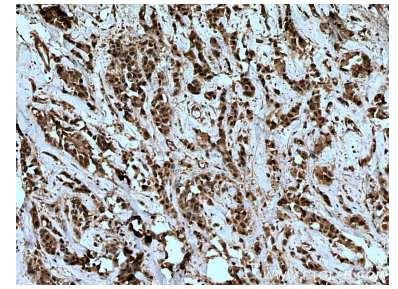
## Ausgewählte Validierungsdaten



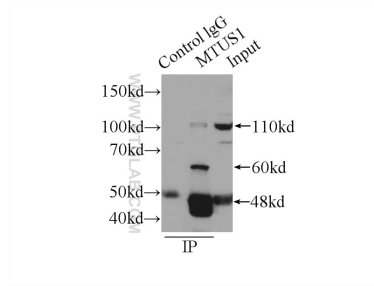
Jurkat lysates were subjected to SDS PAGE followed by western blot with 13436-1-AP (MTUS1 antibody) at dilution of 1:800 incubated at room temperature for 1.5 hours.



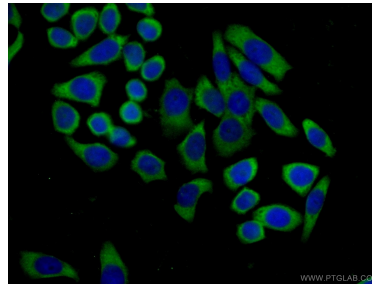
mouse brain tissue were subjected to SDS PAGE followed by western blot with 13436-1-AP (MTUS1 antibody) at dilution of 1:300 incubated at room temperature for 1.5 hours.



Immunohistochemical analysis of paraffin-embedded human breast cancer tissue slide using 13436-1-AP (MTUS1 antibody) at dilution of 1:600 (under 10x lens). Heat mediated antigen retrieval with Tris-EDTA buffer (pH 9.0).



IP Result of anti-MTUS1 (IP:13436-1-AP, 4ug; Detection:13436-1-AP 1:500) with mouse brain tissue lysate 6000ug.



Immunofluorescent analysis of (-20°C Ethanol) fixed PC-3 cells using 13436-1-AP (MTUS1 antibody) at dilution of 1:50 and Alexa Fluor 488-conjugated AffiniPure Goat Anti-Rabbit IgG(H+L).