

Nur für Forschungszwecke

# IL-22RA1 Polyklonaler Antikörper

Katalog-Nr.: 13462-1-AP

9 Publikationen



## Allgemeine Informationen

<b>Katalog-Nr.:</b> 13462-1-AP	<b>GenBank-Zugangsnummer:</b> BC029273	<b>Reinigungsmethode:</b> Antigen-Affinitätsreinigung
<b>Größe:</b> 150ul, Konzentration: 700 µg/ml von Nanodrop;	<b>GeneID (NCBI):</b> 58985	<b>Empfohlene Verdünnungen:</b> WB 1:1000-1:4000 IF 1:50-1:500
<b>Wirt:</b> Kaninchen	<b>Vollständiger Name:</b> interleukin 22 receptor, alpha 1	
<b>Isotyp:</b> IgG	<b>Berechnete Masse:</b> 574 aa, 63 kDa	
<b>Immunogen Katalognummer:</b> AG4056	<b>Beobachtete Masse:</b> 63-68 kDa	

## Anwendungen

<b>Geprüfte Anwendungen:</b> FC, IF, WB, ELISA	<b>Positivkontrollen:</b>
<b>In Publikationen genannte Anwendungen:</b> FC, IF, IHC, WB	<b>WB:</b> COLO 320-Zellen, HEK-293-Zellen, HepG2-Zellen, Maus-Dünndarmgewebe
<b>Getestete Reaktivität:</b> Human, Maus, Ratte	<b>IF:</b> human gut,
<b>Zitierte Arten:</b> Human, Maus, Ratte	

## Hintergrundinformationen

Interleukin-22 (IL-22), a member of the IL-10 family of cytokines, is important for the modulation of tissue responses during inflammation. IL-22 receptor is a heterodimer of the IL-10RB and IL-22RA1. IL-22RA1 belongs to the class II cytokine receptor family. It is expressed in a limited number of tissues including skin, colon, liver, lung, pancreas and kidney. The expression is lack in immune cells such as monocytes, T cells, and NK cells (PMID: 15308104). IL-22RA1 can also form a receptor for IL-20 and IL-24 with IL20RB (PMID: 23793061).

## Bemerkenswerte Veröffentlichungen

Verfasser	Pubmed ID	Journal	Anwendung
Zixuan Gao	36103628	Am J Physiol Endocrinol Metab	WB,IF
Yufei Wang	36201050	Cell Tissue Res	IF
Shidi Wu	31790685	Life Sci	WB

## Lagerung

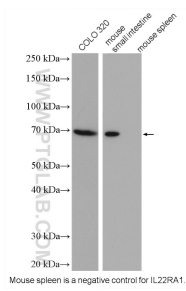
**Lagerungsbedingungen:**  
Bei -20°C lagern. Nach dem Versand ein Jahr lang stabil  
**Lagerungspuffer:**  
PBS mit 0.02% Natriumazid und 50% Glycerin pH 7.3.  
Aliquotieren ist nicht notwendig bei -20°C Lagerung

\*\*\* 20ul-Größen enthalten 0.1% BSA

For technical support and original validation data for this product please contact:  
T: 1 (888) 4PTGLAB (1-888-478-4522) (toll free in USA), or 1(312) 455-8498 (outside USA)  
E: proteintech@ptglab.com  
W: ptglab.com

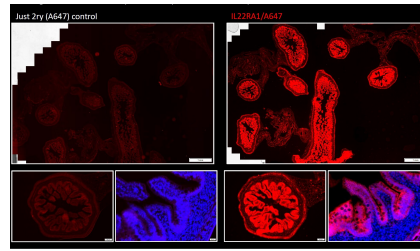
This product is exclusively available under Proteintech Group brand and is not available to purchase from any other manufacturer.

## Ausgewählte Validierungsdaten

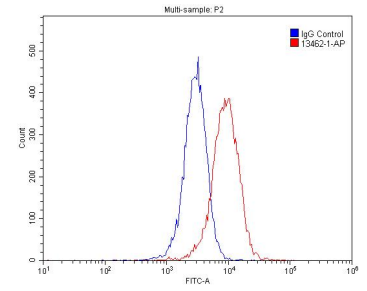


Mouse spleen is a negative control for IL22RA1.

Various lysates were subjected to SDS PAGE followed by western blot with 13462-1-AP (IL22RA1 antibody) at dilution of 1:2000 incubated at room temperature for 1.5 hours.



Staining of IL22RA1 (Cat#13462-1-AP) (2 $\mu$ g/ml) on FFPE human gut. The nuclei were counter stained with DAPI (in blue). The IL22RA1 signal is localized in the epithelial compartment which is expected. (Data from Manuel Florez, Laboratory Dre. Naglaa Shoukry, CRCHUM).



1X10<sup>6</sup> HepG2 cells were stained with .2 $\mu$ g IL22RA1 antibody (13462-1-AP, red) and control antibody (blue). Fixed with 4% PFA blocked with 3% BSA (30 min). Alexa Fluor 488-conjugated AffiniPure Goat Anti-Rabbit IgG(H+L) with dilution 1:1500.