

Nur für Forschungszwecke

PPP2CA Polyklonaler Antikörper

Katalog-Nr.:13482-1-AP

Vorgestelltes Produkt

26 Publikationen



Allgemeine Informationen

Katalog-Nr.:
13482-1-AP

Größe:
150ul, Konzentration: 350 µg/ml von
Nanodrop und 213 µg/ml durch die
Bradford-Methode mit BSA als
Standard;

Wirt:
Kaninchen

Isotyp:
IgG

Immunogen Katalognummer:
AG4294

GenBank-Zugangsnummer:
BC031696

GeneID (NCBI):
5515

Vollständiger Name:
protein phosphatase 2 (formerly 2A),
catalytic subunit, alpha isoform

Berechnete Masse:
309 aa, 36 kDa

Beobachtete Masse:
36 kDa

Reinigungsmethode:
Antigen-Affinitätsreinigung

Empfohlene Verdünnungen:
WB 1:500-1:1000
IP 0.5-4.0 ug für IP und 1:500-1:1000
für WB
IHC 1:50-1:500
IF 1:50-1:500

Anwendungen

Geprüfte Anwendungen:
FC, IF, IHC, IP, WB, ELISA

In Publikationen genannte Anwendungen:

CoIP, IF, IHC, IP, WB

Getestete Reaktivität:
Human, Maus, Ratte

Zitierte Arten:
Human, Maus

Hinweis-IHC: Antigendemaskierung mit TE-Puffer pH 9,0 empfohlen. (*) Wahlweise kann die Antigendemaskierung auch mit Citratpuffer pH 6,0 erfolgen.

Positivkontrollen:

WB: Jurkat-Zellen, HEK-293T-Zellen, humanes
Lebergewebe, MCF-7-Zellen

IP: HeLa-Zellen, Jurkat-Zellen

IHC: humanes Lebergewebe,

IF: MCF-7-Zellen,

Hintergrundinformationen

PPP2CA, also named as RP-C and PP2A-alpha, belongs to the PPP phosphatase family and PP-1 subfamily. PP2A can modulate the activity of phosphorylase B kinase casein kinase 2, mitogen-stimulated S6 kinase, and MAP-2 kinase. PP2A activity was modestly decreased in AML patients harboring C-KIT/WT. PP2A is a target for C-KIT/TKD and implicated the potential efficacy of therapies targeting PP2A in such AML in future.

Bemerkenswerte Veröffentlichungen

Verfasser	Pubmed ID	Journal	Anwendung
Jian Guo	32989094	J Immunol	WB
Xiang Xu	34561619	Cell Res	WB,IP
Hai Zheng	33243860	Science	WB

Lagerung

Lagerungsbedingungen:

Bei -20°C lagern. Nach dem Versand ein Jahr lang stabil

Lagerungspuffer:

PBS mit 0.02% Natriumazid und 50% Glycerin pH 7.3.

Aliquotieren ist nicht notwendig bei -20°C Lagerung

*** 20ul-Größen enthalten 0.1% BSA

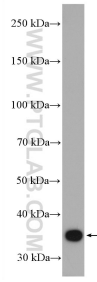
For technical support and original validation data for this product please contact:

T: 1 (888) 4PTGLAB (1-888-478-4522) (toll free
in USA), or 1(312) 455-8498 (outside USA)

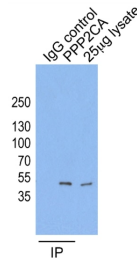
E: proteintech@ptglab.com
W: ptglab.com

This product is exclusively available under Proteintech Group brand and is not available to purchase from any other manufacturer.

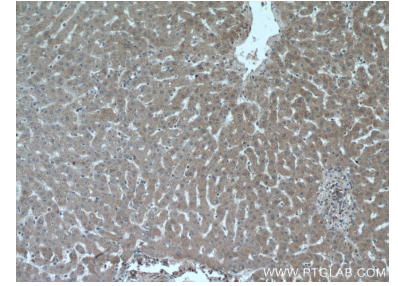
Ausgewählte Validierungsdaten



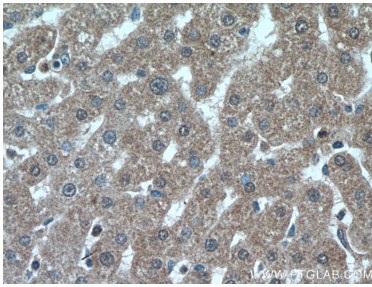
Jurkat cells were subjected to SDS PAGE followed by western blot with 13482-1-AP (PPP2CA antibody) at dilution of 1:600 incubated at room temperature for 1.5 hours.



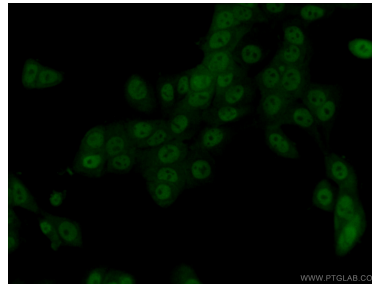
IP result of anti-PPP2CA (13482-1-AP for IP and Detection) with HeLa cells.



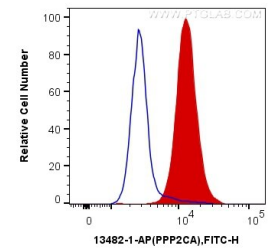
Immunohistochemical analysis of paraffin-embedded human liver tissue slide using 13482-1-AP (PPP2CA antibody) at dilution of 1:200 (under 10x lens).



Immunohistochemical analysis of paraffin-embedded human liver tissue slide using 13482-1-AP (PPP2CA antibody) at dilution of 1:200 (under 40x lens).



Immunofluorescent analysis of (4% PFA) fixed MCF-7 cells using 13482-1-AP (PPP2CA antibody) at dilution of 1:50 and Alexa Fluor 488-Conjugated AffiniPure Goat Anti-Rabbit IgG(H+L).



1×10^6 MCF-7 cells were intracellularly stained with 0.2 μ g Anti-Human PPP2CA (13482-1-AP) and CoraLite[®]488-Conjugated AffiniPure Goat Anti-Rabbit IgG(H+L) at dilution 1:1000 (red), or 0.2 μ g Control Antibody. Cells were fixed and permeabilized with Transcription Factor Staining Buffer Kit (PF00011).