

Allgemeine Informationen

Katalog-Nr.:
13497-1-AP

Größe:
150ul, Konzentration: 620 µg/ml von
Nanodrop und 613 µg/ml durch die
Bradford-Methode mit BSA als
Standard;

Wirt:
Kaninchen

Isotyp:
IgG

Immunogen Katalognummer:
AG4323

GenBank-Zugangsnummer:
BC032579

GeneID (NCBI):
5015

Vollständiger Name:
orthodenticle homeobox 2

Berechnete Masse:
297 aa, 32 kDa

Beobachtete Masse:
31-35 kDa

Reinigungsmethode:

Antigen-Affinitätsreinigung

Empfohlene Verdünnungen:

WB 1:2000-1:16000

IP 0.5-4.0 µg für IP und 1:500-1:3000
für WB

IHC 1:20-1:200

IF 1:50-1:500

Anwendungen

Geprüfte Anwendungen:

FC, IF, IHC, IP, WB, ELISA

In Publikationen genannte Anwendungen:

ChIP, IF, IHC, WB

Getestete Reaktivität:

Human, Maus, Ratte

Zitierte Arten:

Huhn, Human, Maus

**Hinweis-IHC: Antigendemaskierung mit TE-
Puffer pH 9,0 empfohlen. (*) Wahlweise
kann die Antigendemaskierung auch mit
Citratpuffer pH 6,0 erfolgen.**

Positivkontrollen:

WB : Y79-Zellen, Maus-Retina-Gewebe, Ratten-Retina-
Gewebe

IP : Y79-Zellen,

IHC : humanes Gliomgewebe,

IF : Mausembryogewebe,

Hintergrundinformationen

The orthodenticle homeobox 2, encoded by OTX2 gene, is a key transcription factor in developmental processes. In particular, it is required for the early specification of the brain and the embryonic development of sensory organs, including the, pineal gland, pituitary gland, inner part of the ear, eyes, and optic nerve. In later stages, it is important for maintaining intact retina and brain function. In addition, it acts as a transcriptional repressor and a gatekeeper of myogenic and neuronal differentiation in medulloblastoma cells. OTX2 binds to the MyoD1 core enhancer through its homeobox domain and the remarkable repressor activity exhibited by the homeobox domain renders OTX2 transcriptionally repressive

Bemerkenswerte Veröffentlichungen

Verfasser	Pubmed ID	Journal	Anwendung
Kyle S. Smith	36131015	Nature	WB
Meng Li	36273157	J Exp Clin Cancer Res	WB,ChIP
Yue Li	29031852	Neuropharmacology	IHC

Lagerung

Lagerungsbedingungen:

Bei -20°C lagern. Nach dem Versand ein Jahr lang stabil

Lagerungspuffer:

PBS mit 0.02% Natriumazid und 50% Glycerin pH 7.3.

Aliquotieren ist nicht notwendig bei -20°C Lagerung

***** 20ul-Größen enthalten 0.1% BSA**

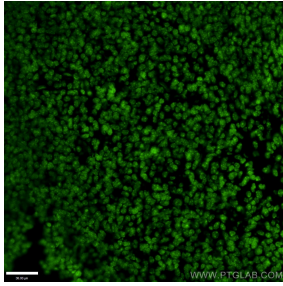
For technical support and original validation data for this product please contact:

T: 1 (888) 4PTGLAB (1-888-478-4522) (toll free
in USA), or 1(312) 455-8498 (outside USA)

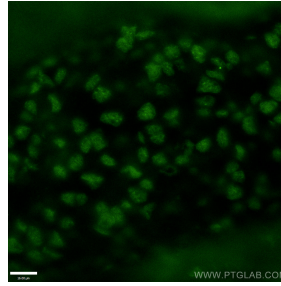
E: proteintech@ptglab.com
W: ptglab.com

**This product is exclusively available under Proteintech
Group brand and is not available to purchase from any
other manufacturer.**

Ausgewählte Validierungsdaten



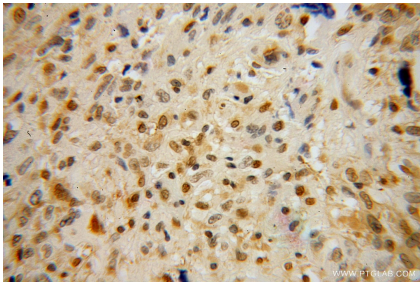
Immunofluorescent analysis of (4% PFA) fixed mouse embryo tissue using 13497-1-AP (OTX2 antibody) at dilution of 1:50 and Alexa Fluor 488-conjugated AffiniPure Goat Anti-Rabbit IgG(H+L).



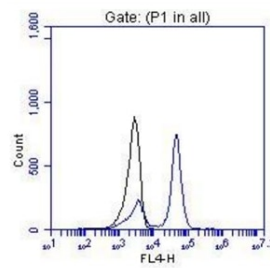
Immunofluorescent analysis of (4% PFA) fixed mouse embryo tissue using 13497-1-AP (OTX2 antibody) at dilution of 1:50 and Alexa Fluor 488-conjugated AffiniPure Goat Anti-Rabbit IgG(H+L).



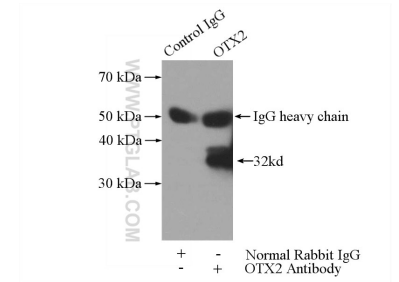
Various lysates were subjected to SDS PAGE followed by western blot with 13497-1-AP (OTX2 antibody) at dilution of 1:8000 incubated at room temperature for 1.5 hours.



Immunohistochemical analysis of paraffin-embedded human gliomas using 13497-1-AP (OTX2 antibody) at dilution of 1:100 (under 40x lens).



FC result of anti-OTX2 (13497-1-AP, 1:100) with hESC which spontaneous differentiation toward retinal lineage (RPE). (Black: control; Blue OTX2).



IP Result of anti-OTX2 (IP:13497-1-AP, 3ug; Detection:13497-1-AP 1:1500) with Y79 cells lysate 2400ug.