

Nur für Forschungszwecke

# ACTL7B Polyklonaler Antikörper

Katalog-Nr.:13537-1-AP

1 Publikationen



## Allgemeine Informationen

<b>Katalog-Nr.:</b> 13537-1-AP	<b>GenBank-Zugangsnummer:</b> BC033789	<b>Reinigungsmethode:</b> Antigen-Affinitätsreinigung
<b>Größe:</b> 150ul , Konzentration: 300 µg/ml von Nanodrop;	<b>GeneID (NCBI):</b> 10880	<b>Empfohlene Verdünnungen:</b> WB 1:500-1:3000 IHC 1:20-1:200
<b>Wirt:</b> Kaninchen	<b>Vollständiger Name:</b> actin-like 7B	
<b>Isotyp:</b> IgG	<b>Berechnete Masse:</b> 415 aa, 45 kDa	
<b>Immunogen Katalognummer:</b> AG4460	<b>Beobachtete Masse:</b> 45 kDa	

## Anwendungen

### Geprüfte Anwendungen:

IHC, WB, ELISA

### Getestete Reaktivität:

Human, Maus, Ratte

**Hinweis-IHC: Antigendemaskierung mit TE-Puffer pH 9,0 empfohlen. (\*) Wahlweise kann die Antigendemaskierung auch mit Citratpuffer pH 6,0 erfolgen.**

### Positivkontrollen:

WB : humanes Hodengewebe, humanes Lebergewebe, Maushodengewebe

IHC : humanes Prostatakarzinomgewebe,

## Hintergrundinformationen

ACTL7B is also named as actin-like-7-beta. The protein encoded by this gene is a member of a family of actin-related proteins (ARPs) which share significant amino acid sequence identity to conventional actins. The ARPs are involved in diverse cellular processes, including vesicular transport, spindle orientation, nuclear migration and chromatin remodeling. The ACTL7B gene is expressed predominantly in the testis, however, its exact function is not known. Diseases associated with ACTL7B include Dysautonomia and Hypertensive Nephropathy. An important paralog of this gene is ACTL7A. ACTL7B can be detected as 45 kDa.

## Bemerkenswerte Veröffentlichungen

Verfasser	Pubmed ID	Journal	Anwendung
Brian P Hermann	30404016	Cell Rep	

## Lagerung

### Lagerungsbedingungen:

Bei -20°C lagern. Nach dem Versand ein Jahr lang stabil

### Lagerungspuffer:

PBS mit 0.02% Natriumazid und 50% Glycerin pH 7.3.

Aliquotieren ist nicht notwendig bei -20°C Lagerung

\*\*\* 20ul-Größen enthalten 0.1% BSA

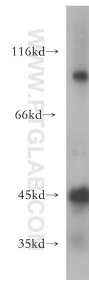
For technical support and original validation data for this product please contact:

T: 1 (888) 4PTGLAB (1-888-478-4522) (toll free in USA), or 1(312) 455-8498 (outside USA)

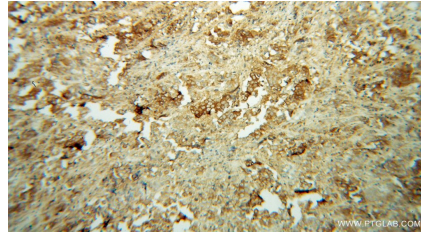
E: proteintech@ptglab.com  
W: ptglab.com

This product is exclusively available under Proteintech Group brand and is not available to purchase from any other manufacturer.

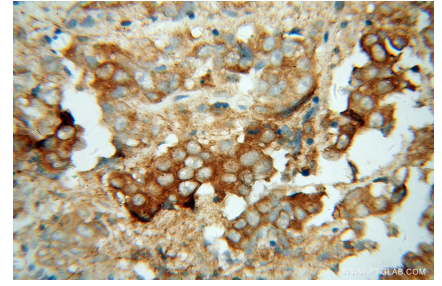
## Ausgewählte Validierungsdaten



human testis tissue were subjected to SDS PAGE followed by western blot with 13537-1-AP (ACTL7B antibody) at dilution of 1:300 incubated at room temperature for 1.5 hours.



Immunohistochemical analysis of paraffin-embedded human prostate cancer using 13537-1-AP (ACTL7B antibody) at dilution of 1:100 (under 10x lens).



Immunohistochemical analysis of paraffin-embedded human prostate cancer using 13537-1-AP (ACTL7B antibody) at dilution of 1:100 (under 40x lens).