

Nur für Forschungszwecke

# COP1 Polyklonaler Antikörper

Katalog-Nr.: 13542-1-AP

1 Publikationen



## Allgemeine Informationen

Katalog-Nr.:

13542-1-AP

Größe:

150ul, Konzentration: 147 µg/ml durch die Bradford-Methode mit BSA als Standard;

Wirt:

Kaninchen

Isotyp:

IgG

Immunogen Katalognummer:

AG4484

GenBank-Zugangsnummer:

BC039723

GeneID (NCBI):

64326

Vollständiger Name:

ring finger and WD repeat domain 2

Berechnete Masse:

731 aa, 80 kDa

Beobachtete Masse:

90 kDa

Reinigungsmethode:

Antigen-Affinitätsreinigung

Empfohlene Verdünnungen:

WB 1:500-1:1000

IHC 1:50-1:500

## Anwendungen

Geprüfte Anwendungen:

IHC, WB, ELISA

In Publikationen genannte Anwendungen:

WB

Getestete Reaktivität:

Human, Maus, Ratte

Zitierte Arten:

Human

**Hinweis-IHC: Antigendemaskierung mit TE-Puffer pH 9,0 empfohlen. (\*) Wahlweise kann die Antigendemaskierung auch mit Citratpuffer pH 6,0 erfolgen.**

Positivkontrollen:

WB : Mausherzgewebe,

IHC : humanes Osteosarkomgewebe,

## Hintergrundinformationen

COP1 is also named as RFWD2, RNF200 and belongs to the COP1 family. It is a ubiquitin ligase that targets key regulators for degradation, and DET1 complexes with COP10 and DDB1, which is proposed to aid in COP1-mediated degradation (PMID:22705257). The endogenous COP1 is localized predominantly in the nucleus, but small amount may also be present in the cytosol. Within the nucleus, COP1 is present in both the nucleoplasm (NP) and the nuclear envelope (NE) fractions, although COP1 is more enriched in the nucleoplasm (PMID:12466024). Two of the COP1 isoforms identified by RNA-seq analysis predicted the size of two proteins detected by the antibody for COP1, a 75 kDa band, corresponding to the longer isoform, and a 50 kDa band corresponding to the shorter isoform. (PMID:24714719). It has been shown that COP1 forms dimerization through its coiled-coil region.

## Bemerkenswerte Veröffentlichungen

Verfasser	Pubmed ID	Journal	Anwendung
Yoon-Jin Kim	30393117	Cancer Lett	WB

## Lagerung

Lagerungsbedingungen:

Bei -20°C lagern. Nach dem Versand ein Jahr lang stabil

Lagerungspuffer:

PBS mit 0.02% Natriumazid und 50% Glycerin pH 7.3.

Aliquotieren ist nicht notwendig bei -20°C Lagerung

\*\*\* 20ul-Größen enthalten 0.1% BSA

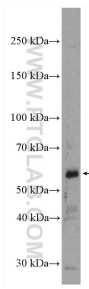
For technical support and original validation data for this product please contact:

T: 1 (888) 4PTGLAB (1-888-478-4522) (toll free in USA), or 1(312) 455-8498 (outside USA)

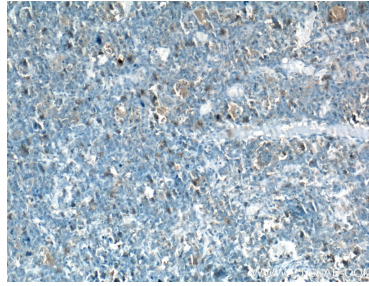
E: proteintech@ptglab.com  
W: ptglab.com

This product is exclusively available under Proteintech Group brand and is not available to purchase from any other manufacturer.

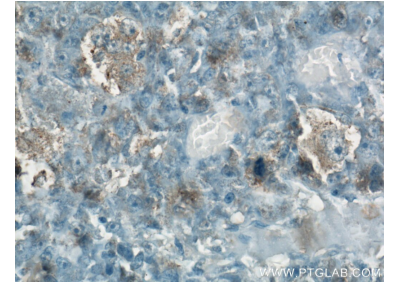
## Ausgewählte Validierungsdaten



mouse heart tissue were subjected to SDS PAGE followed by western blot with 13542-1-AP (COP1 antibody) at dilution of 1:600 incubated at room temperature for 1.5 hours.



Immunohistochemical analysis of paraffin-embedded human osteosarcoma tissue slide using 13542-1-AP (COP1 Antibody) at dilution of 1:200 (under 10x lens). Heat mediated antigen retrieval with Tris-EDTA buffer (pH 9.0).



Immunohistochemical analysis of paraffin-embedded human osteosarcoma tissue slide using 13542-1-AP (COP1 Antibody) at dilution of 1:200 (under 40x lens). Heat mediated antigen retrieval with Tris-EDTA buffer (pH 9.0).