

## Allgemeine Informationen

## Katalog-Nr.:

13543-1-AP

## Größe:

150ul , Konzentration: 750 µg/ml von Nanodrop und 400 µg/ml durch die Bradford-Methode mit BSA als Standard;

## Wirt:

Kaninchen

## Isotyp:

IgG

## Immunogen Katalognummer:

AG4486

## GenBank-Zugangsnummer:

BC039004

## GeneID (NCBI):

54677

## Vollständiger Name:

carnitine O-octanoyltransferase

## Berechnete Masse:

612 aa, 66 kDa

## Beobachtete Masse:

65-70 kDa

## Reinigungsmethode:

Antigen-Affinitätsreinigung

## Empfohlene Verdünnungen:

WB 1:2000-1:12000

IHC 1:20-1:200

## Anwendungen

## Geprüfte Anwendungen:

FC, IHC, WB, ELISA

## In Publikationen genannte Anwendungen:

IF, IHC, WB

## Getestete Reaktivität:

Human, Maus, Ratte

## Zitierte Arten:

Human

**Hinweis-IHC: Antigendemaskierung mit TE-Puffer pH 9,0 empfohlen. (\*) Wahlweise kann die Antigendemaskierung auch mit Citratpuffer pH 6,0 erfolgen.**

## Positivkontrollen:

WB : Mauslebergewebe, Mausnierengewebe

IHC : humanes Leberkarzinomgewebe,

## Hintergrundinformationen

CROT, also named as COT, belongs to the carnitine/choline acetyltransferase family. It is a beta-oxidation of fatty acids. The highest activity concerns the C6 to C10 chain length substrate. CROT converts the end product of pristanic acid beta oxidation, 4,8-dimethylnonanoyl-CoA, to its corresponding carnitine ester. Carnitine palmitoyltransferase (CPT) deficiencies are common disorders of mitochondrial fatty acid oxidation. The CPT system is made up of two separate proteins located in the outer (CPT1) and inner (CPT2) mitochondrial membranes. CROT is an active forms for carnitine octanoyltransferase. This antibody can bind the close sequences genes.

## Bemerkenswerte Veröffentlichungen

Verfasser	Pubmed ID	Journal	Anwendung
Xin Li	36120434	Front Endocrinol (Lausanne)	WB,IHC,IF
Jake Hsu	36587768	J Biol Chem	WB

## Lagerung

## Lagerungsbedingungen:

Bei -20°C lagern. Nach dem Versand ein Jahr lang stabil

## Lagerungspuffer:

PBS mit 0.02% Natriumazid und 50% Glycerin pH 7.3.

Aliquotieren ist nicht notwendig bei -20°C Lagerung

\*\*\* 20ul-Größen enthalten 0.1% BSA

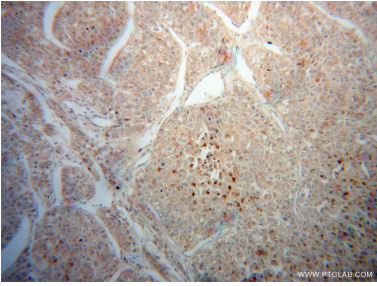
For technical support and original validation data for this product please contact:

T: 1 (888) 4PTGLAB (1-888-478-4522) (toll free in USA), or 1(312) 455-8498 (outside USA)

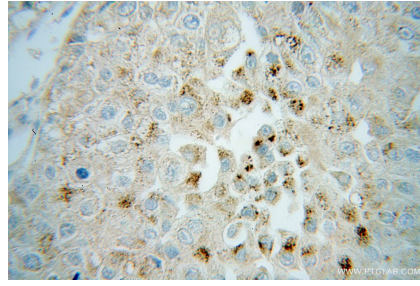
E: [proteintech@ptglab.com](mailto:proteintech@ptglab.com)  
 W: [ptglab.com](http://ptglab.com)

This product is exclusively available under Proteintech Group brand and is not available to purchase from any other manufacturer.

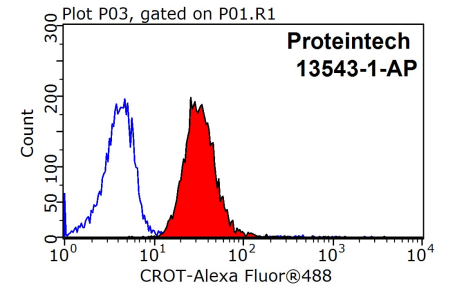
## Ausgewählte Validierungsdaten



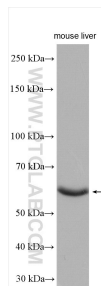
Immunohistochemical analysis of paraffin-embedded human liver cancer using 13543-1-AP (CROT antibody) at dilution of 1:100 (under 10x lens).



Immunohistochemical analysis of paraffin-embedded human liver cancer using 13543-1-AP (CROT antibody) at dilution of 1:100 (under 40x lens).



1X10<sup>6</sup> HepG2 cells were stained with 0.2ug CROT antibody (13543-1-AP, red) and control antibody (blue). Fixed with 90% MeOH blocked with 3% BSA (30 min). Alexa Fluor 488-conjugated AffiniPure Goat Anti-Rabbit IgG(H+L) with dilution 1:1500.



mouse liver tissue were subjected to SDS PAGE followed by western blot with 13543-1-AP (CROT antibody) at dilution of 1:6000 incubated at room temperature for 1.5 hours.