

Nur für Forschungszwecke

Alpha-2-Macroglobulin Polyklonaler Antikörper



Katalog-Nr.:13545-1-AP

2 Publikationen

Allgemeine Informationen

Katalog-Nr.:
13545-1-AP

Größe:
150ul , Konzentration: 500 µg/ml von 2
Nanodrop und 200 µg/ml durch die
Bradford-Methode mit BSA als
Standard;

Wirt:
Kaninchen

Isotyp:
IgG

Immunogen Katalognummer:
AG4489

GenBank-Zugangsnummer:
BC040071

GeneID (NCBI):

Vollständiger Name:
alpha-2-macroglobulin

Berechnete Masse:
1474 aa, 163 kDa

Beobachtete Masse:
185 kDa

Reinigungsmethode:

Antigen-Affinitätsreinigung

Empfohlene Verdünnungen:

WB 1:5000-1:20000

IP 0.5-4.0 ug für IP und 1:500-1:2000
für WB

IHC 1:50-1:500

IF 1:50-1:500

Anwendungen

Geprüfte Anwendungen:

IF, IHC, IP, WB, ELISA

In Publikationen genannte Anwendungen:

WB

Getestete Reaktivität:

Human

Zitierte Arten:

Human, Plasmodium Falciparum

Hinweis-IHC: Antigendemaskierung mit TE-Puffer pH 9,0 empfohlen. (*) Wahlweise kann die Antigendemaskierung auch mit Citratpuffer pH 6,0 erfolgen.

Positivkontrollen:

WB : humanes Blutgewebe, HepG2-Zellen, humanes Hirngewebe, humanes Plasmagewebe

IP : HepG2-Zellen,

IHC : humanes Lebergewebe,

IF : HepG2-Zellen,

Hintergrundinformationen

alpha-2-macroglobulin, also known as α 2-macroglobulin (α 2M or A2M), is a protein abundant in the plasma of vertebrates and several invertebrates. A2M is an evolutionarily conserved arm of the innate immune system. It also mediates the proliferation of T cells and macrophages. A2M acts as a nonspecific protease inhibitor involved in the host defense mechanism that inactivates both endogenous and exogenous proteases, including trypsin, thrombin and collagenase. Even though A2M is produced predominantly by the liver, it may also be expressed in the reproductive tract, heart, and brain, and may have important roles in many physiological processes and medical illnesses including Alzheimer's disease.

Bemerkenswerte Veröffentlichungen

| Verfasser | Pubmed ID | Journal | Anwendung |
|-----------------|-----------|---------------|-----------|
| Takahiro Tougan | 32295584 | MaLar J | WB |
| Riikka Lampinen | 35456941 | Int J Mol Sci | WB |

Lagerung

Lagerungsbedingungen:

Bei -20°C lagern. Nach dem Versand ein Jahr lang stabil

Lagerungspuffer:

PBS mit 0.02% Natriumazid und 50% Glycerin pH 7.3.

Aliquotieren ist nicht notwendig bei -20°C Lagerung

*** 20ul-Größen enthalten 0.1% BSA

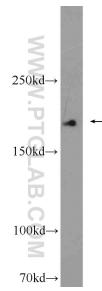
For technical support and original validation data for this product please contact:

T: 1 (888) 4PTGLAB (1-888-478-4522) (toll free in USA), or 1(312) 455-8498 (outside USA)

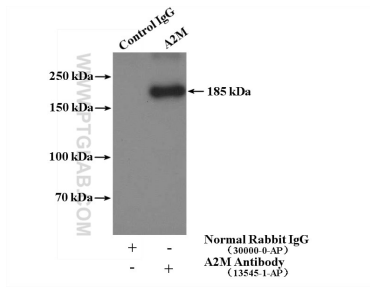
E: proteintech@ptglab.com
W: ptglab.com

This product is exclusively available under Proteintech Group brand and is not available to purchase from any other manufacturer.

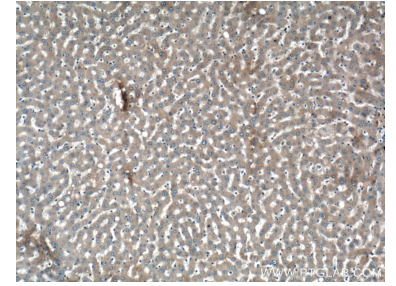
Ausgewählte Validierungsdaten



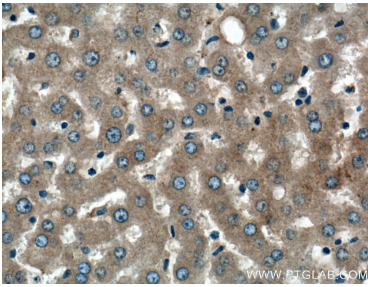
human blood were subjected to SDS PAGE followed by western blot with 13545-1-AP (Alpha-2-macroglobulin antibody) at dilution of 1:6000 incubated at room temperature for 1.5 hours.



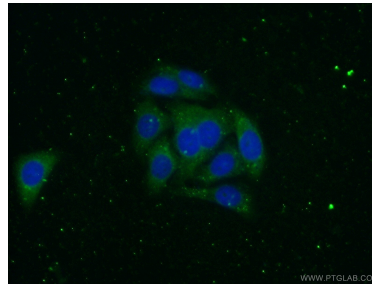
IP result of anti-Alpha-2-macroglobulin (IP:13545-1-AP, 4ug; Detection:13545-1-AP 1:1000) with HepG2 cells lysate 4000 ug.



Immunohistochemical analysis of paraffin-embedded human liver tissue slide using 13545-1-AP (Alpha-2-macroglobulin antibody) at dilution of 1:200 (under 10x lens).



Immunohistochemical analysis of paraffin-embedded human liver tissue slide using 13545-1-AP (Alpha-2-macroglobulin antibody) at dilution of 1:200 (under 40x lens).



Immunofluorescent analysis of (-20°C Ethanol) fixed HepG2 cells using 13545-1-AP (Alpha-2-macroglobulin antibody) at dilution of 1:100 and Alexa Fluor 488-conjugated AffiniPure Goat Anti-Rabbit IgG(H+L).