

Nur für Forschungszwecke

# MLXIP Polyklonaler Antikörper

Katalog-Nr.:13614-1-AP

Vorgestelltes Produkt

15 Publikationen



## Allgemeine Informationen

Katalog-Nr.:  
13614-1-AP

Größe:  
150ul, Konzentration: 450 µg/ml von  
Nanodrop und 347 µg/ml durch die  
Bradford-Methode mit BSA als  
Standard;

Wirt:  
Kaninchen

Isotyp:  
IgG

Immunogen Katalognummer:  
AG4519

GenBank-Zugangsnummer:  
BC039704

GeneID (NCBI):  
22877

Vollständiger Name:  
MLX interacting protein

Berechnete Masse:  
919 aa, 100 kDa

Beobachtete Masse:  
130 kDa

Reinigungsmethode:

Antigen-Affinitätsreinigung

Empfohlene Verdünnungen:

WB 1:200-1:1000  
IP 0.5-4.0 µg für IP und 1:200-1:1000  
für WB  
IHC 1:20-1:200  
IF 1:10-1:100

## Anwendungen

Geprüfte Anwendungen:

IF, IHC, IP, WB, ELISA

In Publikationen genannte Anwendungen:

ChIP, FC, IHC, IP, WB

Getestete Reaktivität:

Human, Maus, Ratte

Zitierte Arten:

Human, Maus

**Hinweis-IHC: Antigenmaskierung mit TE-Puffer pH 9,0 empfohlen. (\*) Wahlweise kann die Antigenmaskierung auch mit Citratpuffer pH 6,0 erfolgen.**

Positivkontrollen:

WB : K-562-Zellen,

IP : K-562-Zellen,

IHC : humanes Skelettmuskelgewebe, Maus-Skelettmuskelgewebe

IF : HepG2-Zellen,

## Hintergrundinformationen

Mlx-interacting protein (MLXIP), after forming heterodimers with MLX, can bind to and then activate transcription from CACGTG E boxes. The N terminus of MLXIP acts as a CRM1-dependent nuclear export signal and contribute to the cytoplasmic localization of the complex, and as a binding site for 13 protein. The C terminus contains a cytoplasmic localization signal and mediates protein-protein interaction of MONDOA and MLX. The complex play a role in transcriptional activation of glycolytic target genes and glucose-responsive gene regulation. This antibody could recognize isoform1 (~110kd) and isoform3 (~69kd) of MLXIP. A prominent and specific MLXIP of approximately 130 kDa was detected. It demonstrates that MLXIP associated specifically with Mlx in the cytoplasm (PMID: 11073985).

## Bemerkenswerte Veröffentlichungen

Verfasser	Pubmed ID	Journal	Anwendung
Zhizhou Ye	30037981	Mol Cell Biol	WB
Hei-Man Chow	31636448	Nat Neurosci	chIP
Patrick A Carroll	34669700	PLoS Biol	WB,IHC

## Lagerung

Lagerungsbedingungen:

Bei -20°C lagern. Nach dem Versand ein Jahr lang stabil

Lagerungspuffer:

PBS mit 0.02% Natriumazid und 50% Glycerin pH 7.3.

Aliquotieren ist nicht notwendig bei -20°C Lagerung

\*\*\* 20ul-Größen enthalten 0.1% BSA

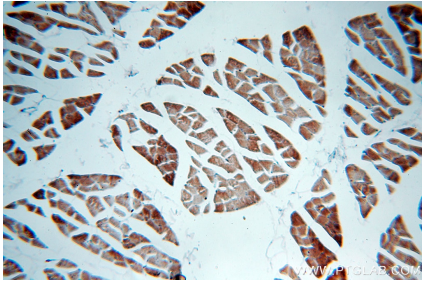
For technical support and original validation data for this product please contact:

T: 1 (888) 4PTGLAB (1-888-478-4522) (toll free in USA), or 1(312) 455-8498 (outside USA)

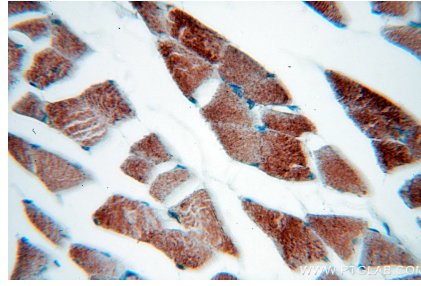
E: proteintech@ptglab.com  
W: ptglab.com

This product is exclusively available under Proteintech Group brand and is not available to purchase from any other manufacturer.

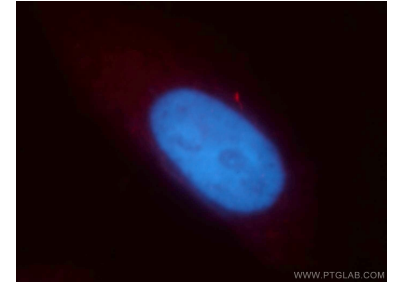
## Ausgewählte Validierungsdaten



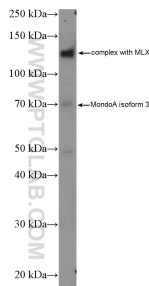
Immunohistochemical analysis of paraffin-embedded human skeletal muscle using 13614-1-AP (MLXIP antibody) at dilution of 1:100 (under 10x lens).



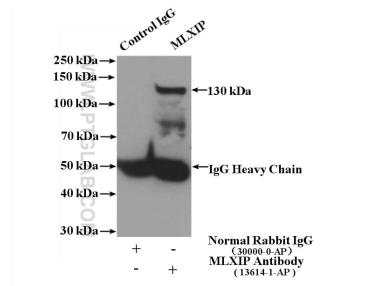
Immunohistochemical analysis of paraffin-embedded human skeletal muscle using 13614-1-AP (MLXIP antibody) at dilution of 1:100 (under 40x lens).



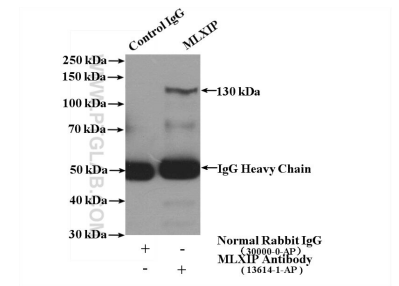
Immunofluorescent analysis of HepG2 cells, using MLXIP antibody 13614-1-AP at 1:25 dilution and Rhodamine-labeled goat anti-rabbit IgG (red). Blue pseudocolor = DAPI (fluorescent DNA dye).



K-562 cells were subjected to SDS PAGE followed by western blot with 13614-1-AP (MLXIP Antibody) at dilution of 1:300 incubated at room temperature for 1.5 hours.



IP Result of anti-MLXIP (IP:13614-1-AP, 4ug; Detection:13614-1-AP 1:300) with K-562 cells lysate 3200ug.



IP Result of anti-MLXIP (IP:13614-1-AP, 4ug; Detection:13614-1-AP 1:300) with K-562 cells lysate 3200ug.