

Allgemeine Informationen

Katalog-Nr.: 13615-1-AP	GenBank-Zugangsnummer: BC038094	Reinigungsmethode: Antigen-Affinitätsreinigung
Größe: 150ul, Konzentration: 400 µg/ml von Nanodrop;	GeneID (NCBI): 90410	Empfohlene Verdünnungen: WB 1:300-1:800 IP 0.5-4.0 ug für IP und 1:500-1:1000 für WB
Wirt: Kaninchen	Vollständiger Name: intraflagellar transport 20 homolog (Chlamydomonas)	IHC 1:20-1:200 IF 1:20-1:200
Isotyp: IgG	Berechnete Masse: 15 kDa	
Immunogen Katalognummer: AG4521	Beobachtete Masse: 15-18 kDa	

Anwendungen

Geprüfte Anwendungen:

IF, IHC, IP, WB, ELISA

In Publikationen genannte Anwendungen:

CoIP, FC, IF, IHC, IP, WB

Getestete Reaktivität:

Human, Hund, Maus, Ratte

Zitierte Arten:

Human, Hund, Maus, Ratte, Zebrafisch

Hinweis-IHC: Antigenmaskierung mit TE-Puffer pH 9,0 empfohlen. (*) Wahlweise kann die Antigenmaskierung auch mit Citratpuffer pH 6,0 erfolgen.

Positivkontrollen:

WB: HEK-293-Zellen, Maushodengewebe, MDCK-Zellen, Rattenhodengewebe

IP: Maushodengewebe,

IHC: humanes Endometriumkarzinomgewebe,

IF: hTERT-RPE1-Zellen, MDCK-Zellen

Hintergrundinformationen

Intraflagellar transport (IFT), mediated by molecular motors and IFT particles, is an important transport process that occurs in the cilium. IFT particles are multi-subunit complexes that are made up of complex A and complex B. IFT20 is a component of IFT complex B and involved in ciliary process assembly. It is associated with the Golgi complex and plays a role in the trafficking of ciliary membrane proteins from the Golgi complex to the cilium.

Bemerkenswerte Veröffentlichungen

Verfasser	Pubmed ID	Journal	Anwendung
Hiroyuki Yamaguchi	32988591	Biochem Biophys Res Commun	WB
Oliva Palander	33124112	FASEB J	IF
Roxane Van Heurck	36334595	Neuron	IF

Lagerung

Lagerungsbedingungen:

Bei -20°C lagern. Nach dem Versand ein Jahr lang stabil

Lagerungspuffer:

PBS mit 0.02% Natriumazid und 50% Glycerin pH 7.3.

Aliquotieren ist nicht notwendig bei -20°C Lagerung

***** 20ul-Größen enthalten 0.1% BSA**

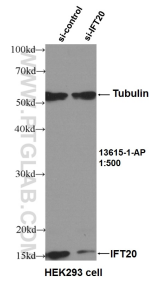
For technical support and original validation data for this product please contact:

T: 1 (888) 4PTGLAB (1-888-478-4522) (toll free in USA), or 1(312) 455-8498 (outside USA)

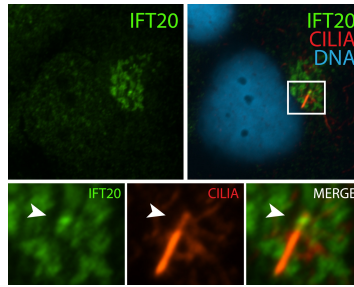
E: proteintech@ptglab.com
W: ptglab.com

This product is exclusively available under Proteintech Group brand and is not available to purchase from any other manufacturer.

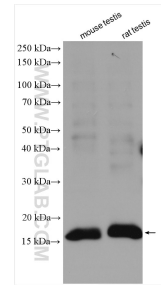
Ausgewählte Validierungsdaten



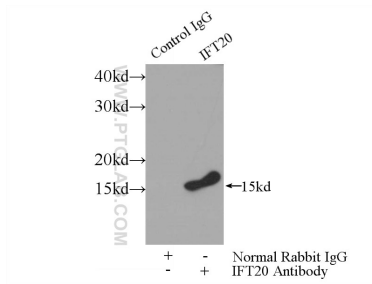
WB result of IFT20 antibody (13615-1-AP, 1:500) with si-Control and si-IFT20 transfected HEK293 cells.



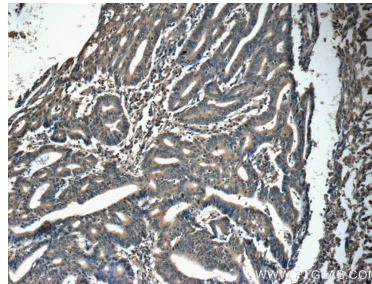
IF result (localization to Golgi-like structures) of anti-IFT20 (13615-1-AP, 1:50) with serum-starved hTERT-RPE1 (MoTH fixed) by Dr. Moshe Kim.



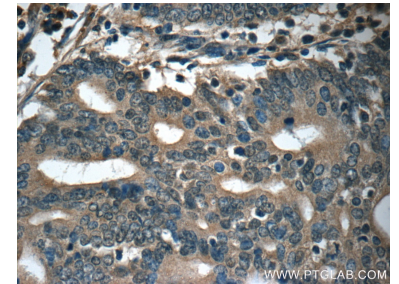
Various lysates were subjected to SDS PAGE followed by western blot with 13615-1-AP (IFT20 antibody) at dilution of 1:800 incubated at room temperature for 1.5 hours.



IP Result of anti-IFT20 (IP:13615-1-AP, 3ug; Detection:13615-1-AP 1:700) with mouse testis tissue lysate 4000ug.



Immunohistochemical analysis of paraffin-embedded human endometrial cancer tissue slide using 13615-1-AP (IFT20 Antibody) at dilution of 1:50 (under 10x lens).



Immunohistochemical analysis of paraffin-embedded human endometrial cancer tissue slide using 13615-1-AP (IFT20 Antibody) at dilution of 1:50 (under 40x lens).