

Nur für Forschungszwecke

# CHMP4B Polyklonaler Antikörper

Katalog-Nr.:13683-1-AP

Vorgestelltes Produkt

39 Publikationen



## Allgemeine Informationen

<b>Katalog-Nr.:</b> 13683-1-AP	<b>GenBank-Zugangsnummer:</b> BC033859	<b>Reinigungsmethode:</b> Antigen-Affinitätsreinigung
<b>Größe:</b> 150ul , Konzentration: 3000 µg/ml von128866	<b>GeneID (NCBI):</b> 128866	<b>Empfohlene Verdünnungen:</b> WB 1:200-1:1000
<b>Nanodrop;</b>	<b>Vollständiger Name:</b> chromatin modifying protein 4B	<b>IHC 1:20-1:200</b>
<b>Wirt:</b> Kaninchen	<b>Berechnete Masse:</b> 224 aa, 25 kDa	<b>IF 1:50-1:500</b>
<b>Isotyp:</b> IgG	<b>Beobachtete Masse:</b> 25-33 kDa	
<b>Immunogen Katalognummer:</b> AG4544		

## Anwendungen

### Geprüfte Anwendungen:

IF, IHC, WB, ELISA

### In Publikationen genannte Anwendungen:

IF, IP, WB

### Getestete Reaktivität:

Human, Maus, Ratte

### Zitierte Arten:

Hausschwein, Human, Hund, Maus, Ratte

**Hinweis-IHC: Antigendemaskierung mit TE-Puffer pH 9,0 empfohlen. (\*) Wahlweise kann die Antigendemaskierung auch mit Citratpuffer pH 6,0 erfolgen.**

### Positivkontrollen:

**WB:** Mausherzgewebe, HeLa-Zellen, Rattenherzgewebe

**IHC:** humanes Ösophaguskarzinomgewebe, humanes Herzgewebe, humanes Skelettmuskelgewebe

**IF:** NIH/3T3-Zellen, C2C12-Zellen, HepG2-Zellen

## Hintergrundinformationen

CHMP4B (charged multivesicular body protein 4b) is a human homologue of yeast Snf7p (also named Vps32p) and a member of CHMP family which is implicated in multivesicular body (MVB) sorting. The CHMP proteins are components of ESCRT-III (endosomal sorting complex required for transport III), a complex involved in degradation of surface receptor proteins and formation of endocytic multivesicular bodies. Among seven CHMP family members, only CHMP4 has been found to interact with Alix, a multifunctional adaptor protein in various cellular functions. This antibody is highly specific to the CHMP4B and it doesn't cross-react with other CHMPs as well as other CHMP4s (CHMP4A and CHMP4C). CHMP4B can be detected 25-33 kDa by post-translational modification (PMID:21543490).

## Bemerkenswerte Veröffentlichungen

Verfasser	Pubmed ID	Journal	Anwendung
Shiwei Liu	30232450	Nature	IF
Jalal M Kazan	34761192	iScience	WB,IF
Curtis B Read	36409075	mBio	IF

## Lagerung

### Lagerungsbedingungen:

Bei -20°C lagern. Nach dem Versand ein Jahr lang stabil

### Lagerungspuffer:

PBS mit 0.02% Natriumazid und 50% Glycerin pH 7.3.

Aliquotieren ist nicht notwendig bei -20°C Lagerung

**\*\*\* 20ul-Größen enthalten 0.1% BSA**

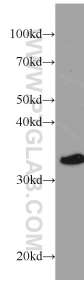
For technical support and original validation data for this product please contact:

T: 1 (888) 4PTGLAB (1-888-478-4522) (toll free in USA), or 1(312) 455-8498 (outside USA)

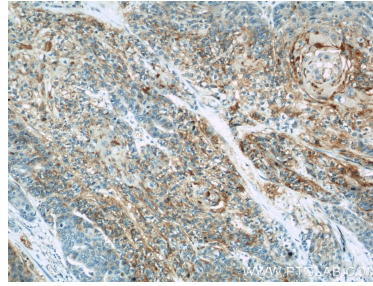
E: [proteintech@ptglab.com](mailto:proteintech@ptglab.com)  
W: [ptglab.com](http://ptglab.com)

**This product is exclusively available under Proteintech Group brand and is not available to purchase from any other manufacturer.**

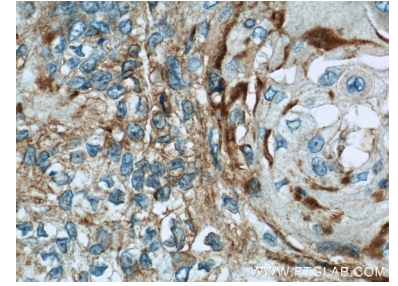
## Ausgewählte Validierungsdaten



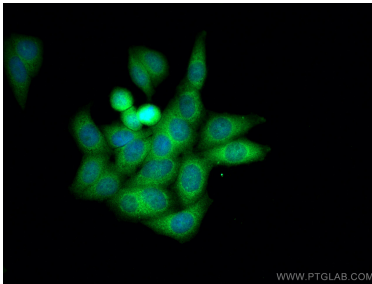
mouse heart tissue were subjected to SDS PAGE followed by western blot with 13683-1-AP (CHMP4B antibody) at dilution of 1:200 incubated at room temperature for 1.5 hours.



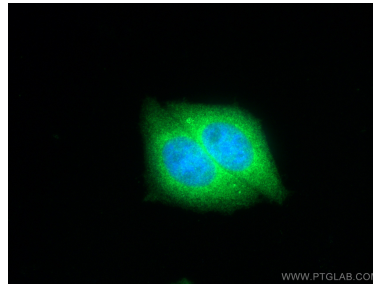
Immunohistochemical analysis of paraffin-embedded human oesophagus cancer using 13683-1-AP (CHMP4B antibody) at dilution of 1:50 (under 10x lens).



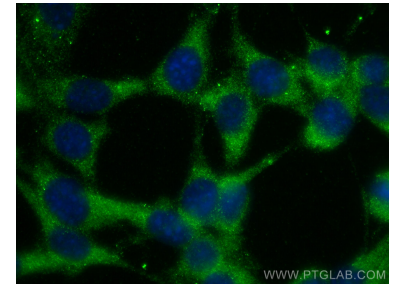
Immunohistochemical analysis of paraffin-embedded human oesophagus cancer using 13683-1-AP (CHMP4B antibody) at dilution of 1:50 (under 40x lens).



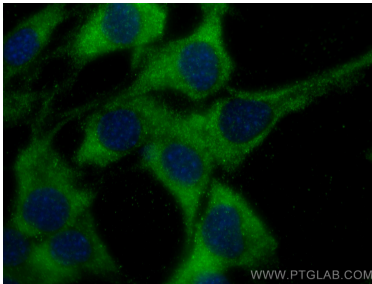
Immunofluorescent analysis of (4% PFA) fixed HepG2 cells using CHMP4B antibody (13683-1-AP) at dilution of 1:400 and CoraLite®488-Conjugated AffiniPure Goat Anti-Rabbit IgG(H+L).



Immunofluorescent analysis of (4% PFA) fixed HepG2 cells using CHMP4B antibody (13683-1-AP) at dilution of 1:400 and CoraLite®488-Conjugated AffiniPure Goat Anti-Rabbit IgG(H+L).



Immunofluorescent analysis of (-20°C Ethanol) fixed NIH/3T3 cells using CHMP4B antibody (13683-1-AP) at dilution of 1:200 and CoraLite®488-Conjugated AffiniPure Goat Anti-Rabbit IgG(H+L).



Immunofluorescent analysis of (-20°C Methanol) fixed C2C12 cells using CHMP4B antibody (13683-1-AP) at dilution of 1:200 and CoraLite®488-Conjugated AffiniPure Goat Anti-Rabbit IgG(H+L).