

## Allgemeine Informationen

<b>Katalog-Nr.:</b> 13690-1-AP	<b>GenBank-Zugangsnummer:</b> BC032597	<b>Reinigungsmethode:</b> Antigen-Affinitätsreinigung
<b>Größe:</b> 150ul , Konzentration: 500 µg/ml von Nanodrop;	<b>GeneID (NCBI):</b> 23327	<b>Empfohlene Verdünnungen:</b> WB 1:1000-1:5000 IP 0.5-4.0 ug für IP und 1:200-1:1000 für WB
<b>Wirt:</b> Kaninchen	<b>Vollständiger Name:</b> neural precursor cell expressed, developmentally down-regulated 4-like	<b>IHC 1:50-1:500</b> <b>IF 1:20-1:200</b>
<b>Isotyp:</b> IgG	<b>Berechnete Masse:</b> 854 aa, 96 kDa	
<b>Immunogen Katalognummer:</b> AG4565	<b>Beobachtete Masse:</b> 112 kDa, 125 kDa	

## Anwendungen

### Geprüfte Anwendungen:

IF, IHC, IP, WB, ELISA

### In Publikationen genannte Anwendungen:

CoIP, IF, IHC, IP, WB

### Getestete Reaktivität:

Human, Maus, Ratte

### Zitierte Arten:

Human, Maus, Ratte

**Hinweis-IHC: Antigenmaskierung mit TE-Puffer pH 9,0 empfohlen. (\*) Wahlweise kann die Antigenmaskierung auch mit Citratpuffer pH 6,0 erfolgen.**

### Positivkontrollen:

**WB** : C6-Zellen, HT-1080.Zellen, PC-12-Zellen, PC-3-Zellen

**IP** : C6-Zellen,

**IHC** : humanes Prostatakarzinomgewebe, humanes Magenkrebsgewebe

**IF** : PC-3-Zellen,

## Hintergrundinformationen

NEDD4L(E3 ubiquitin-protein ligase NEDD4-Like) is also named as KIAA0439, NEDL3, Nedd4-2. It accepts ubiquitin from an E2 ubiquitin-conjugating enzyme in the form of a thioester and then directly transfers the ubiquitin to targeted substrates and is the principal ubiquitin ligase that selectively targets activated SMAD2 and SMAD3 for destruction (PMID:19917253). Nedd4L binds the PY motif of ENaC COOH terminals and catalyzes ubiquitination of the NH2 terminus of the protein for subsequent degradation (PMID:18268134). It has some isoforms produced by alternative splicing. This antibody may have cross reaction with NEDD4 due to the high homology of the antigen.

## Bemerkenswerte Veröffentlichungen

Verfasser	Pubmed ID	Journal	Anwendung
Siyuan Chen	30224386	J Exp Med	WB
Pan Wang	34582065	FASEB J	WB, IP
Gao Chengcheng C	21909941	Med Oncol	IHC

## Lagerung

### Lagerungsbedingungen:

Bei -20°C lagern. Nach dem Versand ein Jahr lang stabil

### Lagerungspuffer:

PBS mit 0.02% Natriumazid und 50% Glycerin pH 7.3.

Aliquotieren ist nicht notwendig bei -20°C Lagerung

**\*\*\* 20ul-Größen enthalten 0.1% BSA**

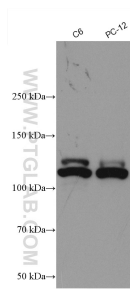
For technical support and original validation data for this product please contact:

T: 1 (888) 4PTGLAB (1-888-478-4522) (toll free in USA), or 1(312) 455-8498 (outside USA)

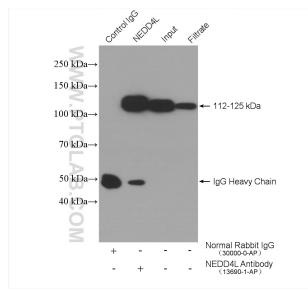
E: [proteintech@ptglab.com](mailto:proteintech@ptglab.com)  
 W: [ptglab.com](http://ptglab.com)

**This product is exclusively available under Proteintech Group brand and is not available to purchase from any other manufacturer.**

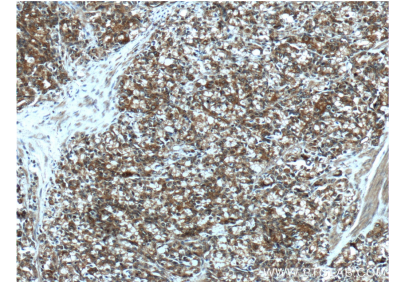
## Ausgewählte Validierungsdaten



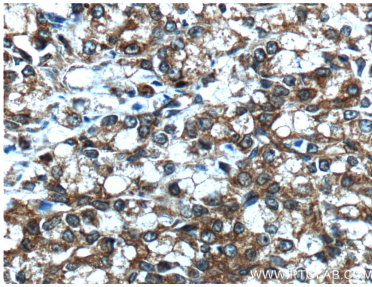
Various lysates were subjected to SDS PAGE followed by western blot with 13690-1-AP (NEDD4L antibody) at dilution of 1:2500 incubated at room temperature for 1.5 hours.



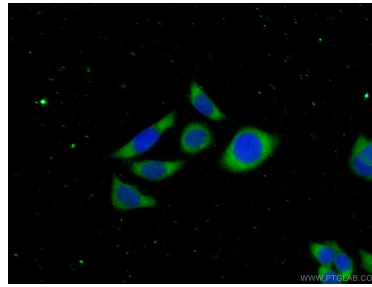
IP result of anti-NEDD4L (IP:13690-1-AP, 4ug; Detection:13690-1-AP 1:300) with C6 cells lysate 1000 ug.



Immunohistochemical analysis of paraffin-embedded human prostate cancer tissue slide using 13690-1-AP (NEDD4L Antibody) at dilution of 1:200 (under 10x lens).



Immunohistochemical analysis of paraffin-embedded human prostate cancer tissue slide using 13690-1-AP (NEDD4L Antibody) at dilution of 1:200 (under 40x lens).



Immunofluorescent analysis of (-20°C Ethanol) fixed PC-3 cells using 13690-1-AP (NEDD4L antibody) at dilution of 1:50 and Alexa Fluor 488-conjugated AffiniPure Goat Anti-Rabbit IgG(H+L).