

## Allgemeine Informationen

<b>Katalog-Nr.:</b> 13801-1-AP	<b>GenBank-Zugangsnummer:</b> BC010860	<b>Reinigungsmethode:</b> Antigen-Affinitätsreinigung
<b>Größe:</b> 150ul , Konzentration: 550 µg/ml von Nanodrop;	<b>GeneID (NCBI):</b> 5054	<b>Empfohlene Verdünnungen:</b> WB 1:500-1:2000 IP 0.5-4.0 ug für IP und 1:500-1:2000 für WB
<b>Wirt:</b> Kaninchen	<b>Vollständiger Name:</b> serpin peptidase inhibitor, clade E (nexin, plasminogen activator inhibitor type 1), member 1	<b>IHC 1:50-1:500</b> <b>IF 1:50-1:500</b>
<b>Isotyp:</b> IgG	<b>Berechnete Masse:</b> 402 aa, 45 kDa	
<b>Immunogen Katalognummer:</b> AG4777	<b>Beobachtete Masse:</b> 45 kDa	

## Anwendungen

### Geprüfte Anwendungen:

IF, IHC, IP, WB, ELISA

### In Publikationen genannte Anwendungen:

CoIP, IF, IHC, WB

### Getestete Reaktivität:

Human

### Zitierte Arten:

Human, Rind

**Hinweis-IHC: Antigendemaskierung mit TE-Puffer pH 9,0 empfohlen. (\*) Wahlweise kann die Antigendemaskierung auch mit Citratpuffer pH 6,0 erfolgen.**

### Positivkontrollen:

**WB** : HuH-7-Zellen, HepG2-Zellen, humanes Plazenta-Gewebe, PC-12-Zellen, U2OS-Zellen

**IP** : HepG2-Zellen,

**IHC** : humanes Lungenkarzinomgewebe,

**IF** : HUVEC-Zellen,

## Hintergrundinformationen

SERPINE1, also named as Plasminogen activator inhibitor type 1 (PAI-1), is a member of the serine protease inhibitor (SERPIN) superfamily. PAI-1 is the principal inhibitor of tPA and uPA, and hence is an inhibitor of fibrinolysis. Defects in this gene are the cause of plasminogen activator inhibitor-1 deficiency (PAI-1 deficiency), and high concentrations of the gene product are associated with thrombophilia. In western blotting, we got two bands 50 kDa and 90-110 kDa, and 90-110 kDa consistent with PAI-1 in complex with its target protease, t-PA (PMID: 21596853).

## Bemerkenswerte Veröffentlichungen

Verfasser	Pubmed ID	Journal	Anwendung
Yasuhiro Nanri	31505128	Am J Respir Cell Mol Biol	IHC
Zengqiang Miao	31734109	J Microbiol Immunol Infect	WB
Muhammad Khan	36389725	Front Immunol	IHC

## Lagerung

### Lagerungsbedingungen:

Bei -20°C lagern. Nach dem Versand ein Jahr lang stabil

### Lagerungspuffer:

PBS mit 0.02% Natriumazid und 50% Glycerin pH 7.3.

Aliquotieren ist nicht notwendig bei -20°C Lagerung

**\*\*\* 20ul-Größen enthalten 0.1% BSA**

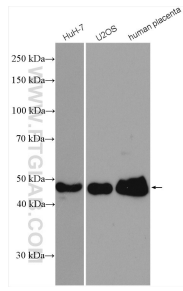
For technical support and original validation data for this product please contact:

T: 1 (888) 4PTGLAB (1-888-478-4522) (toll free in USA), or 1(312) 455-8498 (outside USA)

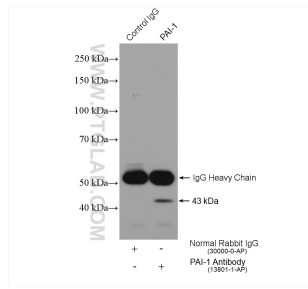
E: [proteintech@ptglab.com](mailto:proteintech@ptglab.com)  
 W: [ptglab.com](http://ptglab.com)

**This product is exclusively available under Proteintech Group brand and is not available to purchase from any other manufacturer.**

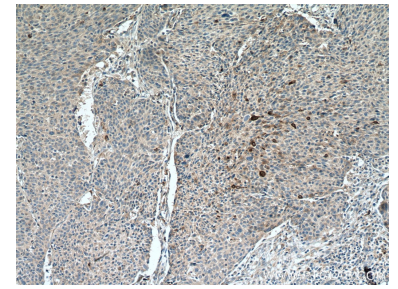
## Ausgewählte Validierungsdaten



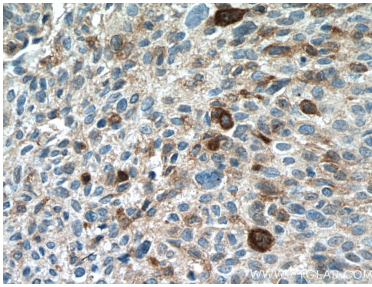
Various lysates were subjected to SDS PAGE followed by western blot with 13801-1-AP (PAI-1 antibody) at dilution of 1:1000 incubated at room temperature for 1.5 hours.



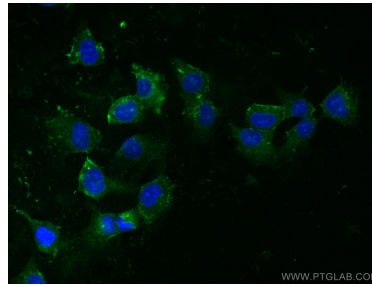
IP result of anti-PAI-1(IP:13801-1-AP, 4ug; Detection:13801-1-AP 1:1000) with HepG2 cells lysate 880 ug.



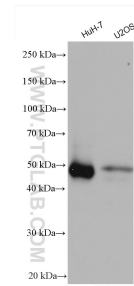
Immunohistochemical analysis of paraffin-embedded human lung cancer tissue slide using 13801-1-AP (PAI-1 antibody) at dilution of 1:200 (under 10x lens. Heat mediated antigen retrieval with Tris-EDTA buffer (pH 9.0).



Immunohistochemical analysis of paraffin-embedded human lung cancer tissue slide using 13801-1-AP (PAI-1 antibody) at dilution of 1:200 (under 40x lens. Heat mediated antigen retrieval with Tris-EDTA buffer (pH 9.0).



Immunofluorescent analysis of (-20°C Ethanol) fixed HUVEC cells using PAI-1 antibody (13801-1-AP) at dilution of 1:200 and CoraLite® 488-Conjugated AffiniPure Goat Anti-Rabbit IgG(H+L).



Huh-7 cells were subjected to SDS PAGE followed by western blot with 13801-1-AP (PAI-1 antibody) at dilution of 1:3000 incubated at room temperature for 1.5 hours.