

Nur für Forschungszwecke

# TKTL1 Polyklonaler Antikörper

Katalog-Nr.:13819-1-AP



## Allgemeine Informationen

<b>Katalog-Nr.:</b> 13819-1-AP	<b>GenBank-Zugangsnummer:</b> BC025382	<b>Reinigungsmethode:</b> Antigen-Affinitätsreinigung
<b>Größe:</b> 150ul , Konzentration: 450 µg/ml von Nanodrop;	<b>GeneID (NCBI):</b> 8277	<b>Empfohlene Verdünnungen:</b> WB 1:500-1:2000
<b>Wirt:</b> Kaninchen	<b>Vollständiger Name:</b> transketolase-like 1	
<b>Isotyp:</b> IgG	<b>Berechnete Masse:</b> 65 kDa	
<b>Immunogen Katalognummer:</b> AG4913	<b>Beobachtete Masse:</b> 65 kDa	

## Anwendungen

<b>Geprüfte Anwendungen:</b> WB, ELISA	<b>Positivkontrollen:</b> WB : HeLa-Zellen, HepG2-Zellen, MCF-7-Zellen, U-251-Zellen
<b>Getestete Reaktivität:</b> Human	

## Hintergrundinformationen

Transketolase (TKT) is an enzyme that is ubiquitously expressed in all living organisms and has been identified as an important regulator of cancer. The TKT family includes the TKT gene and two TKT-like (TKTL) genes; TKTL1 and TKTL2. The basic components ribose-5-phosphate and acetyl-CoA, which are formed by TKTL1, provide essential building blocks for the formation of new cells. TKTL1 also allows survival in the absence of oxygen (hypoxia). TKTL1 also has been shown to be involved in regulating neuronal development in the cerebral cortex.

## Lagerung

**Lagerungsbedingungen:**  
Bei -20°C lagern. Nach dem Versand ein Jahr lang stabil  
**Lagerungspuffer:**  
PBS mit 0.02% Natriumazid und 50% Glycerin pH 7.3.  
Aliquotieren ist nicht notwendig bei -20°C Lagerung

\*\*\* 20ul-Größen enthalten 0.1% BSA

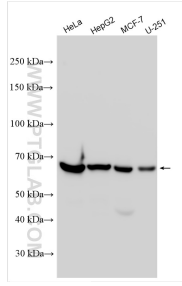
For technical support and original validation data for this product please contact:

T: 1 (888) 4PTGLAB (1-888-478-4522) (toll free  
in USA), or 1(312) 455-8498 (outside USA)

E: proteintech@ptglab.com  
W: ptglab.com

This product is exclusively available under Proteintech Group brand and is not available to purchase from any other manufacturer.

## Ausgewählte Validierungsdaten



Various lysates were subjected to SDS PAGE followed by western blot with 13819-1-AP (TKL1 antibody) at dilution of 1:1000 incubated at room temperature for 1.5 hours.