

Nur für Forschungszwecke

PKC Iota Polyklonaler Antikörper

Katalog-Nr.:13883-1-AP

Vorgestelltes Produkt

5 Publikationen



Allgemeine Informationen

Katalog-Nr.:

13883-1-AP

Größe:

150ul , Konzentration: 550 µg/ml von Nanodrop;

Wirt:

Kaninchen

Isotyp:

IgG

Immunogen Katalognummer:

AG4990

GenBank-Zugangsnummer:

BC022016

GeneID (NCBI):

5584

Vollständiger Name:

protein kinase C, iota

Berechnete Masse:

68 kDa

Beobachtete Masse:

67 kDa

Reinigungsmethode:

Antigen-Affinitätsreinigung

Empfohlene Verdünnungen:

WB 1:1000-1:6000

IP 0.5-4.0 µg für IP und 1:1000-1:4000 für WB

IHC 1:50-1:500

IF 1:200-1:800

Anwendungen

Geprüfte Anwendungen:

FC (Intra), IF, IHC, IP, WB, ELISA

In Publikationen genannte Anwendungen:

CoIP, IF, IHC, WB

Getestete Reaktivität:

Human

Zitierte Arten:

Huhn, Human, Maus

Hinweis-IHC: Antigendemaskierung mit TE-Puffer pH 9,0 empfohlen. (*) Wahlweise kann die Antigendemaskierung auch mit Citratpuffer pH 6,0 erfolgen.

Positivkontrollen:

WB : HeLa-Zellen, MCF-7-Zellen

IP : HeLa-Zellen,

IHC : humanes Mammakarzinomgewebe, humanes Lungenkarzinomgewebe

IF : HeLa-Zellen,

Hintergrundinformationen

Bemerkenswerte Veröffentlichungen

Verfasser	Pubmed ID	Journal	Anwendung
Wei Gao	33234130	Mol Cancer	WB,IF
Liu Liu	31410027	Onco Targets Ther	WB,IHC
Fangfei Li	35173550	Int J Biol Sci	WB

Lagerung

Lagerungsbedingungen:

Bei -20°C lagern. Nach dem Versand ein Jahr lang stabil

Lagerungspuffer:

PBS mit 0.02% Natriumazid und 50% Glycerin pH 7.3.

Aliquotieren ist nicht notwendig bei -20°C Lagerung

*** 20ul-Größen enthalten 0.1% BSA

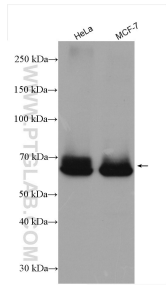
For technical support and original validation data for this product please contact:

T: 1 (888) 4PTGLAB (1-888-478-4522) (toll free in USA), or 1(312) 455-8498 (outside USA)

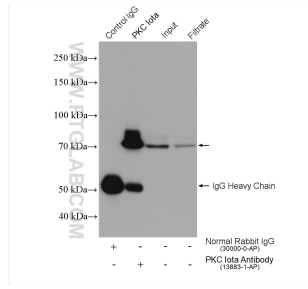
E: proteintech@ptglab.com
W: ptglab.com

This product is exclusively available under Proteintech Group brand and is not available to purchase from any other manufacturer.

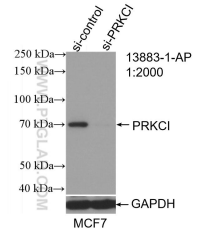
Ausgewählte Validierungsdaten



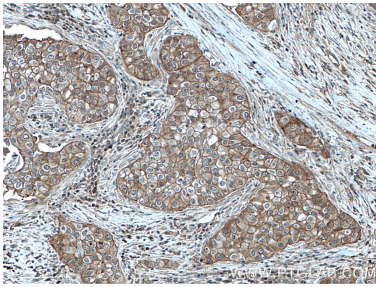
Various lysates were subjected to SDS PAGE followed by western blot with 13883-1-AP (PKC iota antibody) at dilution of 1:3000 incubated at room temperature for 1.5 hours.



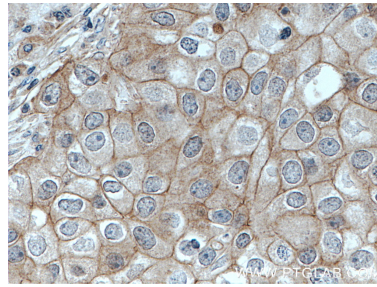
IP result of anti-PKC Iota (IP:13883-1-AP, 4ug; Detection:13883-1-AP 1:2000) with HeLa cells lysate 1720 ug.



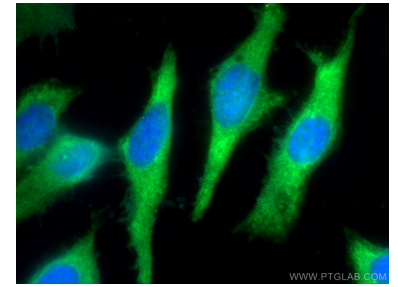
WB result of PKC Iota antibody (13883-1-AP; 1:2000; incubated at room temperature for 1.5 hours) with sh-Control and sh-PKC Iota transfected MCF-7 cells.



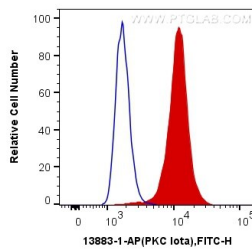
Immunohistochemical analysis of paraffin-embedded human breast cancer tissue slide using 13883-1-AP (PKC Iota antibody) at dilution of 1:200 (under 10x lens. Heat mediated antigen retrieval with Tris-EDTA buffer (pH 9.0).



Immunohistochemical analysis of paraffin-embedded human breast cancer tissue slide using 13883-1-AP (PKC Iota antibody) at dilution of 1:200 (under 40x lens. Heat mediated antigen retrieval with Tris-EDTA buffer (pH 9.0).



Immunofluorescent analysis of (-20°C Methanol) fixed HeLa cells using PKC Iota antibody (13883-1-AP) at dilution of 1:400 and CoraLite@488-Conjugated AffiniPure Goat Anti-Rabbit IgG(H+L).



1x10⁶ HeLa cells were intracellularly stained with 0.2 ug Anti-Human PKC Iota (13883-1-AP) and CoraLite@488-Conjugated AffiniPure Goat Anti-Rabbit IgG(H+L) at dilution 1:1000 (red), or 0.2 ug Control Antibody. Cells were fixed with 4% PFA and permeabilized with Flow Cytometry Perm Buffer (PF00011-C).