

Nur für Forschungszwecke

CX3CR1 Polyklonaler Antikörper

Katalog-Nr.:13885-1-AP

Vorgestelltes Produkt

23 Publikationen



Allgemeine Informationen

Katalog-Nr.:

13885-1-AP

Größe:

150ul , Konzentration: 600 µg/ml von Nanodrop;

Wirt:

Kaninchen

Isotyp:

IgG

Immunogen Katalognummer:

AG4149

GenBank-Zugangsnummer:

BC028078

GeneID (NCBI):

1524

Vollständiger Name:

chemokine (C-X3-C motif) receptor 1

Berechnete Masse:

40 kDa

Beobachtete Masse:

44-47 kDa

Reinigungsmethode:

Antigen-Affinitätsreinigung

Empfohlene Verdünnungen:

WB 1:1000-1:4000

IP 0.5-4.0 µg für IP und 1:500-1:2000

für WB

IHC 1:20-1:200

Anwendungen

Geprüfte Anwendungen:

FC, IHC, IP, WB, ELISA

In Publikationen genannte Anwendungen:

Cell treatment, CoIP, FC, IF, IHC, IP, WB

Getestete Reaktivität:

Human

Zitierte Arten:

Human, Maus, Ratte

Hinweis-IHC: Antigenmaskierung mit TE-Puffer pH 9,0 empfohlen. (*) Wahlweise kann die Antigenmaskierung auch mit Citratpuffer pH 6,0 erfolgen.

Positivkontrollen:

WB : HeLa-Zellen, HL-60-Zellen, K-562-Zellen, SH-SY5Y-Zellen, U-937-Zellen

IP : SH-SY5Y-Zellen,

IHC : humanes Tonsillitgewebe, Maushirngewebe

Hintergrundinformationen

CX3CR1, also known as GPR13, V28 and fractalkine receptor, belongs to the 7-transmembrane G protein-coupled receptor (GPCR) family. It is expressed on microglia, astrocytes, NK cells, monocytes/macrophages, and a subpopulation of T cells. CX3CR1 is the receptor for fractalkine (CX3CL1) and mediates both its adhesive and migratory functions. It also acts as coreceptor with CD4 for HIV-1 virus envelope protein (in vitro), and some variations in the gene of CX3CR1 lead to increased susceptibility to HIV-1 infection and rapid progression to AIDS. Defects in CX3CR1 are a cause of susceptibility to age-related macular degeneration type 12 (ARMD12).

Bemerkenswerte Veröffentlichungen

Verfasser	Pubmed ID	Journal	Anwendung
Jie Li	34561797	Environ Sci Pollut Res Int	WB
Haiyuan Liu	32980177	Gastroenterol Hepatol	WB
Ricardo Bonfante	30248434	Neuroscience	IHC

Lagerung

Lagerungsbedingungen:

Bei -20°C lagern. Nach dem Versand ein Jahr lang stabil

Lagerungspuffer:

PBS mit 0.02% Natriumazid und 50% Glycerin pH 7.3.

Aliquotieren ist nicht notwendig bei -20°C Lagerung

*** 20ul-Größen enthalten 0.1% BSA

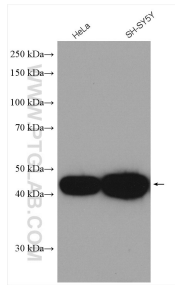
For technical support and original validation data for this product please contact:

T: 1 (888) 4PTGLAB (1-888-478-4522) (toll free in USA), or 1(312) 455-8498 (outside USA)

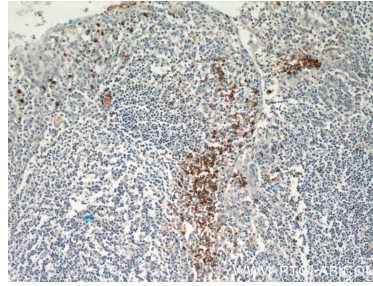
E: proteintech@ptglab.com
W: ptglab.com

This product is exclusively available under Proteintech Group brand and is not available to purchase from any other manufacturer.

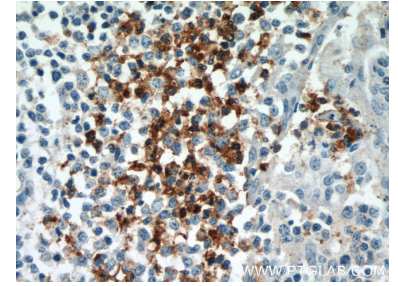
Ausgewählte Validierungsdaten



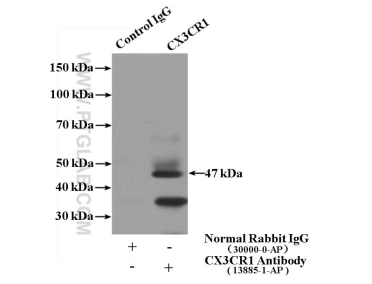
Various lysates were subjected to SDS PAGE followed by western blot with 13885-1-AP (CX3CR1 antibody) at dilution of 1:2000 incubated at room temperature for 1.5 hours.



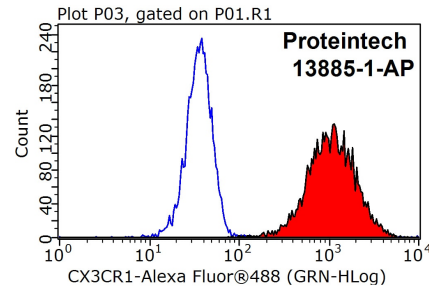
Immunohistochemical analysis of paraffin-embedded human tonsillitis using 13885-1-AP (CX3CR1 antibody) at dilution of 1:50 (under 10x lens).



Immunohistochemical analysis of paraffin-embedded human tonsillitis using 13885-1-AP (CX3CR1 antibody) at dilution of 1:50 (under 40x lens).



IP Result of anti-CX3CR1 (IP:13885-1-AP, 4ug; Detection:13885-1-AP 1:1000) with SH-SY5Y cells lysate 1600ug.



1X10⁶ K-562 cells were stained with 0.2ug CX3CR1 antibody (13885-1-AP, red) and control antibody (blue). Fixed with 90% MeOH blocked with 3% BSA (30 min). Alexa Fluor 488-conjugated AffiniPure Goat Anti-Rabbit IgG(H+L) with dilution 1:1000.