

Allgemeine Informationen

Katalog-Nr.: 13905-1-AP	GenBank-Zugangsnummer: BC041793	Reinigungsmethode: Antigen-Affinitätsreinigung
Größe: 150ul , Konzentration: 520 µg/ml durch die Bradford-Methode mit BSA als Standard;	GeneID (NCBI): 116138	Empfohlene Verdünnungen: WB 1:500-1:2000 IHC 1:20-1:200 IF 1:20-1:200
Wirt: Kaninchen	Vollständiger Name: kelch domain containing 3	
Isotyp: IgG	Berechnete Masse: 382 aa, 43 kDa	
Immunogen Katalognummer: AG4879	Beobachtete Masse: 50 kDa	

Anwendungen

Geprüfte Anwendungen: IF, IHC, WB, ELISA	Positivkontrollen: WB : Maushodengewebe, PC-3-Zellen, Rattenhodengewebe
Getestete Reaktivität: Human, Maus, Ratte	IHC : humanes Hodengewebe, IF : PC-3-Zellen,
Hinweis-IHC: Antigendemaskierung mit TE-Puffer pH 9,0 empfohlen. (*) Wahlweise kann die Antigendemaskierung auch mit Citratpuffer pH 6,0 erfolgen.	

Hintergrundinformationen

The BTB (Broad-Complex, Tramtrack and Bric a brac) domain, also known as the POZ (Poxvirus and Zinc finger) domain, is an N-terminal homodimerization domain that contains multiple copies of kelch repeats and/or C2H2-type zinc fingers. Proteins that contain BTB domains are thought to be involved in transcriptional regulation via control of chromatin structure and function. The Kelch domain-containing protein 3 (KLHDC3), also designated PEAS, contains 5 Kelch repeats and may be involved in meiotic recombination process. The gene encoding KLHDC3 maps to chromosome 6, which contains around 1,200 genes within 170 million base pairs of sequence. Deletion of a portion of the q arm of chromosome 6 is associated with early onset intestinal cancer suggesting the presence of a cancer susceptibility locus. Porphyria cutanea tarda, Parkinson's disease, Stickler syndrome, 21-hydroxylase deficiency and maple syrup urine disease are also associated with genes on chromosome 6. KLHDC3 protein is mainly expressed in cytoplasm, also found in meiotic chromatin. This antibody specifically reacts with the 55kd KLHDC3 protein.

Lagerung

Lagerungsbedingungen:
Bei -20°C lagern. Nach dem Versand ein Jahr lang stabil
Lagerungspuffer:
PBS mit 0.02% Natriumazid und 50% Glycerin pH 7.3.
Aliquotieren ist nicht notwendig bei -20°C Lagerung

***** 20ul-Größen enthalten 0.1% BSA**

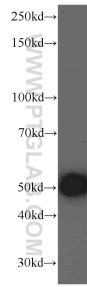
For technical support and original validation data for this product please contact:

T: 1 (888) 4PTGLAB (1-888-478-4522) (toll free
in USA), or 1(312) 455-8498 (outside USA)

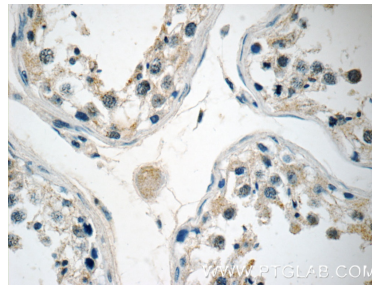
E: proteintech@ptglab.com
W: ptglab.com

This product is exclusively available under Proteintech Group brand and is not available to purchase from any other manufacturer.

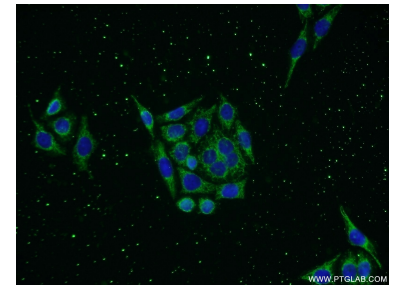
Ausgewählte Validierungsdaten



mouse testis tissue were subjected to SDS PAGE followed by western blot with 13905-1-AP (KLHDC3 antibody) at dilution of 1:1500 incubated at room temperature for 1.5 hours.



Immunohistochemical analysis of paraffin-embedded human testis tissue slide using 13905-1-AP (KLHDC3 Antibody) at dilution of 1:50 (under 40x lens).



Immunofluorescent analysis of PC-3 cells using 13905-1-AP (KLHDC3 antibody) at dilution of 1:50 and Alexa Fluor 488-conjugated AffiniPure Goat Anti-Rabbit IgG(H+L).