

## Allgemeine Informationen

|  |  |   |
|--|--|---|
| <b>Katalog-Nr.:</b><br>13924-1-AP  | <b>GenBank-Zugangsnummer:</b><br>BC030779    | <b>Reinigungsmethode:</b><br>Antigen-Affinitätsreinigung                              |
| <b>Größe:</b><br>150ul , Konzentration: 700 µg/ml von<br>Nanodrop und 347 µg/ml durch die<br>Bradford-Methode mit BSA als<br>Standard; | <b>GeneID (NCBI):</b><br>4534                | <b>Empfohlene Verdünnungen:</b><br>WB 1:500-1:2000<br>IHC 1:50-1:500<br>IF 1:50-1:500 |
| <b>Wirt:</b><br>Kaninchen  | <b>Vollständiger Name:</b><br>myotubularin 1 |   |
| <b>Isotyp:</b><br>IgG  | <b>Berechnete Masse:</b><br>70 kDa           |   |
| <b>Immunogen Katalognummer:</b><br>AG4940  | <b>Beobachtete Masse:</b><br>65-70 kDa       |   |

## Anwendungen

|   |  |
|---|--|
| <b>Geprüfte Anwendungen:</b><br>IF, IHC, WB, ELISA  | <b>Positivkontrollen:</b>                |
| <b>Getestete Reaktivität:</b><br>Human, Maus, Ratte   | <b>WB :</b> L02-Zellen, Jurkat-Zellen    |
| <b>Hinweis-IHC: Antigenmaskierung mit TE-Puffer pH 9,0 empfohlen. (*) Wahlweise kann die Antigenmaskierung auch mit Citratpuffer pH 6,0 erfolgen.</b> | <b>IHC :</b> Ratten-Skelettmuskelgewebe, |
|   | <b>IF :</b> L02-Zellen,                  |

## Hintergrundinformationen

The MTM1(Myotubularin) gene encodes a protein that belongs to a family of putative tyrosine phosphatases. It is required for muscle cell differentiation. The protein is also a potent phosphatidylinositol 3-phosphate (PI3P) phosphatase, which is a 66 kDa ubiquitous protein that is found mutated in the X-linked genetic disorder myotubular myopathy(XLMTM).MTM1 could therefore act as a regulator of the highly active phosphoinositide (PI) metabolism in cells, where interconversions of the eight PIs described so far is controlled by a set of specific kinases and phosphatases(PMID:14660569). MTM1 has two isoforms with the molecular mass of 66kDa and 70 kDa.

## Lagerung

**Lagerungsbedingungen:**  
Bei -20°C lagern. Nach dem Versand ein Jahr lang stabil  
**Lagerungspuffer:**  
PBS mit 0.02% Natriumazid und 50% Glycerin pH 7.3.  
**Aliquotieren ist nicht notwendig bei -20°C Lagerung**

\*\*\* 20ul-Größen enthalten 0.1% BSA

For technical support and original validation data for this product please contact:

T: 1 (888) 4PTGLAB (1-888-478-4522) (toll free  
in USA), or 1(312) 455-8498 (outside USA)

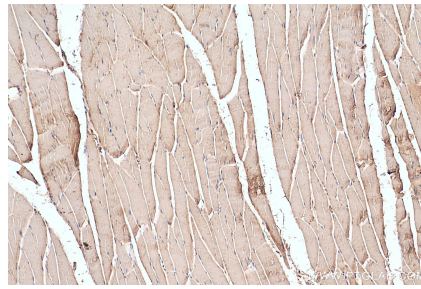
E: proteintech@ptglab.com  
W: ptglab.com

This product is exclusively available under Proteintech Group brand and is not available to purchase from any other manufacturer.

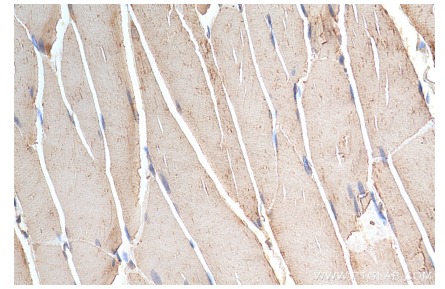
## Ausgewählte Validierungsdaten



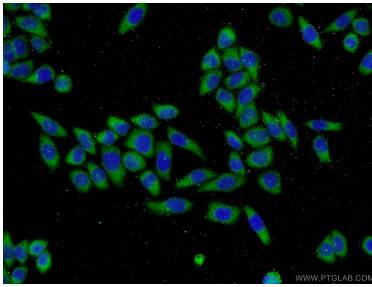
L02 cells were subjected to SDS PAGE followed by western blot with 13924-1-AP (MTM1 antibody) at dilution of 1:1000 incubated at room temperature for 1.5 hours.



Immunohistochemical analysis of paraffin-embedded rat skeletal muscle tissue slide using 13924-1-AP (MTM1 antibody) at dilution of 1:200 (under 10x lens). Heat mediated antigen retrieval with Tris-EDTA buffer (pH 9.0).



Immunohistochemical analysis of paraffin-embedded rat skeletal muscle tissue slide using 13924-1-AP (MTM1 antibody) at dilution of 1:200 (under 40x lens). Heat mediated antigen retrieval with Tris-EDTA buffer (pH 9.0).



Immunofluorescent analysis of L02 cells using 13924-1-AP (MTM1 antibody) at dilution of 1:50 and Alexa Fluor 488-conjugated AffiniPure Goat Anti-Rabbit IgG(H+L).