

Nur für Forschungszwecke

GAPDHS Polyklonaler Antikörper

Katalog-Nr.:13937-1-AP

14 Publikationen



Allgemeine Informationen

Katalog-Nr.: 13937-1-AP	GenBank-Zugangsnummer: BC036373	Reinigungsmethode: Antigen-Affinitätsreinigung
Größe: 150ul , Konzentration: 600 µg/ml von Nanodrop;	GeneID (NCBI): 26330	Empfohlene Verdünnungen: WB 1:500-1:3000
Wirt: Kaninchen	Vollständiger Name: glyceraldehyde-3-phosphate dehydrogenase, spermatogenic	
Isotyp: IgG	Berechnete Masse: 45 kDa	
Immunogen Katalognummer: AG4988	Beobachtete Masse: 64 kDa	

Anwendungen

Geprüfte Anwendungen: WB, ELISA	Positivkontrollen: WB : Maushodengewebe, Rattenhodengewebe
In Publikationen genannte Anwendungen: WB	
Getestete Reaktivität: Maus, Ratte	
Zitierte Arten: Huhn, Human, Maus, Ratte	

Hintergrundinformationen

GAPDHS(Glyceraldehyde-3-phosphate dehydrogenase, testis-specific) is also named as GAPD2, GAPDH2, GAPDS and belongs to the glyceraldehyde-3-phosphate dehydrogenase family. It may play an important role in regulating the switch between different pathways for energy production during spermiogenesis and in the spermatozoon. GAPDHS is a promising contraceptive target because it is specific to male germ cells, essential for sperm motility and male fertility, and well suited to pharmacological inhibition(PMID:20828617).

Bemerkenswerte Veröffentlichungen

Verfasser	Pubmed ID	Journal	Anwendung
Jingya Gu	33029279	Oxid Med Cell Longev	WB
Zijun Peng	34741939	J Hazard Mater	WB
Guodong Liu	29344176	Oncol Lett	WB

Lagerung

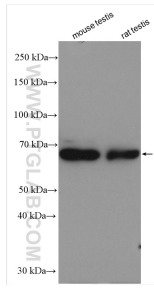
Lagerungsbedingungen:
Bei -20°C lagern. Nach dem Versand ein Jahr lang stabil
Lagerungspuffer:
PBS mit 0.02% Natriumazid und 50% Glycerin pH 7.3.
Aliquotieren ist nicht notwendig bei -20°C Lagerung

*** 20ul-Größen enthalten 0.1% BSA

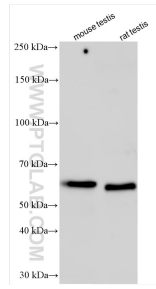
For technical support and original validation data for this product please contact:
T: 1 (888) 4PTGLAB (1-888-478-4522) (toll free in USA), or 1(312) 455-8498 (outside USA)
E: proteintech@ptglab.com
W: ptglab.com

This product is exclusively available under Proteintech Group brand and is not available to purchase from any other manufacturer.

Ausgewählte Validierungsdaten



Various lysates were subjected to SDS PAGE followed by western blot with 13937-1-AP (GAPDH antibody) at dilution of 1:1500 incubated at room temperature for 1.5 hours.



Various lysates were subjected to SDS PAGE followed by western blot with 13937-1-AP (GAPDH antibody) at dilution of 1:5000 incubated at room temperature for 1.5 hours.