

Allgemeine Informationen

Katalog-Nr.: 13949-1-AP	GenBank-Zugangsnummer: BC036060	Reinigungsmethode: Antigen-Affinitätsreinigung
Größe: 150ul , Konzentration: 300 µg/ml von Nanodrop und 233 µg/ml durch die Bradford-Methode mit BSA als Standard;	GeneID (NCBI): 9261	Empfohlene Verdünnungen: WB 1:500-1:1000 IHC 1:50-1:500 IF 1:200-1:800
Wirt: Kaninchen	Vollständiger Name: mitogen-activated protein kinase-activated protein kinase 2	
Isotyp: IgG	Berechnete Masse: 400 aa, 46 kDa	
Immunogen Katalognummer: AG5060	Beobachtete Masse: 47-50 kDa	

Anwendungen

Geprüfte Anwendungen: IF, IHC, WB, ELISA	Positivkontrollen:
In Publikationen genannte Anwendungen: IHC, WB	WB : HeLa-Zellen, A549-Zellen, Maus-Kolongewebe, Maus-Skelettmuskelgewebe
Getestete Reaktivität: Human, Maus	IHC : humanes Mammakarzinomgewebe, humanes Nierengewebe
Zitierte Arten: Human, Maus	IF : HeLa-Zellen,
Hinweis-IHC: Antigendemaskierung mit TE-Puffer pH 9,0 empfohlen. (*) Wahlweise kann die Antigendemaskierung auch mit Citratpuffer pH 6,0 erfolgen.	

Hintergrundinformationen

MAPKAPK2(mitogen-activated protein kinase-activated protein kinase 2) is also named as MK2, MAPKAP-K2, MK-2 and belongs to the CAMK Ser/Thr protein kinase family. MAPKAPK2, one of several kinases directly phosphorylated and activated by p38 MAPK, plays a central role in the inflammatory response and is in the nucleus of unstimulated cells and moves rapidly to the cytoplasm after stimulation(PMID:12171911). It is also involved in many other cellular processes including stress responses, nuclear export, gene expression regulation and cell proliferation. Multiple residues of MAPKAPK2 are generally phosphorylated in vivo in response to stress, but only 4 residues(Thr25, Thr222, Ser272, and Thr334) are phosphorylated by p38 MAPK in vitro(PMID:22351694). It has 2 isoforms produced by alternative splicing and the range of the molecular weight is 42-60 kDa according to the references(PMID:10666409; 11328854;8995385).

Bemerkenswerte Veröffentlichungen

Verfasser	Pubmed ID	Journal	Anwendung
Yan Zhang	34731635	Cell Rep	WB
Rui Wang	31575657	Mol Cancer Res	
Fengze Sun	34795209	Cell Death Dis	WB,IHC

Lagerung

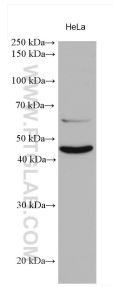
Lagerungsbedingungen:
Bei -20°C lagern. Nach dem Versand ein Jahr lang stabil
Lagerungspuffer:
PBS mit 0.02% Natriumazid und 50% Glycerin pH 7.3.
 Aliquotieren ist nicht notwendig bei -20°C Lagerung

***** 20ul-Größen enthalten 0.1% BSA**

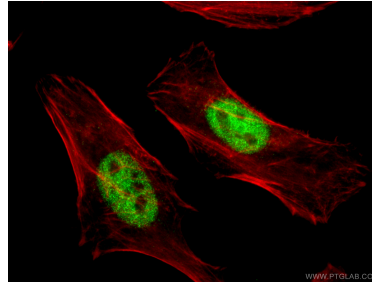
For technical support and original validation data for this product please contact:
 T: 1 (888) 4PTGLAB (1-888-478-4522) (toll free in USA), or 1(312) 455-8498 (outside USA)
 E: proteintech@ptglab.com
 W: ptglab.com

This product is exclusively available under Proteintech Group brand and is not available to purchase from any other manufacturer.

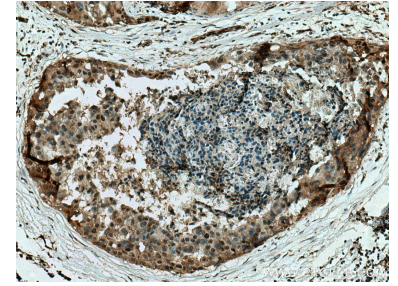
Ausgewählte Validierungsdaten



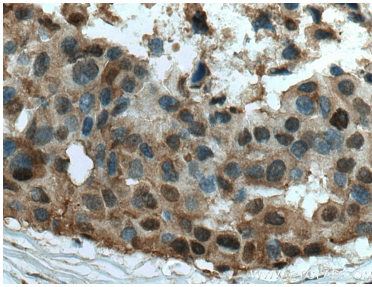
HeLa cells were subjected to SDS PAGE followed by western blot with 13949-1-AP (MAPKAPK2 antibody) at dilution of 1:800 incubated at room temperature for 1.5 hours.



Immunofluorescent analysis of (4% PFA) fixed HeLa cells using 13949-1-AP (MAPKAPK2 antibody), at dilution of 1:400 and CoraLite®488-Conjugated AffiniPure Goat Anti-Rabbit IgG(H+L); F-actin is stained using CL555-phalloidin (red).



Immunohistochemical analysis of paraffin-embedded human breast cancer tissue slide using 13949-1-AP (MAPKAPK2 antibody) at dilution of 1:200 (under 10x lens). Heat mediated antigen retrieval with Tris-EDTA buffer (pH 9.0).



Immunohistochemical analysis of paraffin-embedded human breast cancer tissue slide using 13949-1-AP (MAPKAPK2 antibody) at dilution of 1:200 (under 40x lens). Heat mediated antigen retrieval with Tris-EDTA buffer (pH 9.0).