

Nur für Forschungszwecke

# ALDH1A2 Polyklonaler Antikörper

Katalog-Nr.: 13951-1-AP

7 Publikationen



## Allgemeine Informationen

Katalog-Nr.:  
13951-1-AP

Größe:  
150ul, Konzentration: 550 µg/ml von  
Nanodrop und 353 µg/ml durch die  
Bradford-Methode mit BSA als  
Standard;

Wirt:  
Kaninchen

Isotyp:  
IgG

Immunogen Katalognummer:  
AG5062

GenBank-Zugangsnummer:  
BC030589

GeneID (NCBI):  
8854

Vollständiger Name:  
aldehyde dehydrogenase 1 family,  
member A2

Berechnete Masse:  
518 aa, 57 kDa

Beobachtete Masse:  
53-57 kDa

Reinigungsmethode:

Antigen-Affinitätsreinigung

Empfohlene Verdünnungen:

WB 1:500-1:2000  
IP 0.5-4.0 µg für IP und 1:200-1:1000  
für WB  
IHC 1:50-1:500

## Anwendungen

Geprüfte Anwendungen:

IHC, IP, WB, ELISA

In Publikationen genannte Anwendungen:

IHC, WB

Getestete Reaktivität:

Human, Maus, Ratte

Zitierte Arten:

Human, Maus

**Hinweis-IHC: Antigenmaskierung mit TE-Puffer pH 9,0 empfohlen. (\*) Wahlweise kann die Antigenmaskierung auch mit Citratpuffer pH 6,0 erfolgen.**

Positivkontrollen:

WB: K-562-Zellen, Maushodengewebe

IP: Maushodengewebe,

IHC: humanes Hodengewebe,

## Hintergrundinformationen

ALDH1A2(aldehyde dehydrogenase family 1 member A2) is also named as RALDH2(retinal dehydrogenase 2) and belongs to the aldehyde dehydrogenase family. It is a cytosolic homotetramer(56.7 kDa subunits) exhibiting complex expression patterns throughout embryonic development. ALDH1A2 plays a role in retinoid metabolism during embryonic development where it is considered to be the major retinoic acid-synthesizing enzyme during early embryogenesis(PMID:20735668). Its expression is reduced in primary prostate tumors compared with normal prostate tissue suggested that it is normally expressed in the epithelial compartment of prostate tissue(PMID:16166285).It has 2 isoforms produced by alternative splicing.

## Bemerkenswerte Veröffentlichungen

Verfasser	Pubmed ID	Journal	Anwendung
Bilbija Dusan D	23028599	PLoS One	WB
My-Thanh Beedle	30247516	Biol Reprod	IHC
Carlos J Diaz Osterman	31478830	Elife	WB

## Lagerung

Lagerungsbedingungen:

Bei -20°C lagern. Nach dem Versand ein Jahr lang stabil

Lagerungspuffer:

PBS mit 0.02% Natriumazid und 50% Glycerin pH 7.3.

Aliquotieren ist nicht notwendig bei -20°C Lagerung

\*\*\* 20ul-Größen enthalten 0.1% BSA

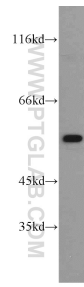
For technical support and original validation data for this product please contact:

T: 1 (888) 4PTGLAB (1-888-478-4522) (toll free in USA), or 1(312) 455-8498 (outside USA)

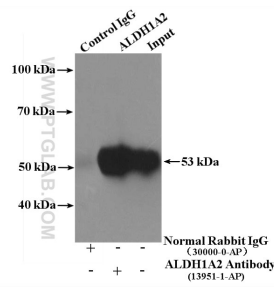
E: proteintech@ptglab.com  
W: ptglab.com

This product is exclusively available under Proteintech Group brand and is not available to purchase from any other manufacturer.

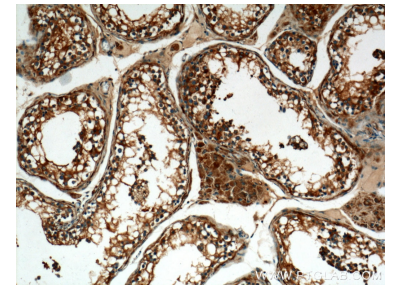
## Ausgewählte Validierungsdaten



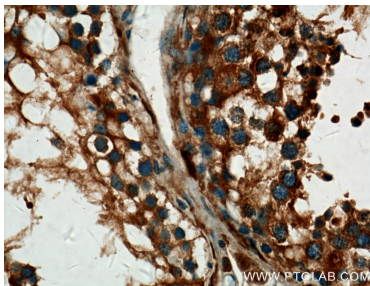
K-562 cells were subjected to SDS PAGE followed by western blot with 13951-1-AP (ALDH1A2 antibody) at dilution of 1:1000 incubated at room temperature for 1.5 hours.



IP Result of anti-ALDH1A2 (IP:13951-1-AP, 4ug; Detection:13951-1-AP 1:300) with mouse testis tissue lysate 4400ug.



Immunohistochemical analysis of paraffin-embedded human testis tissue slide using 13951-1-AP (ALDH1A2 Antibody) at dilution of 1:200 (under 10x lens).



Immunohistochemical analysis of paraffin-embedded human testis tissue slide using 13951-1-AP (ALDH1A2 Antibody) at dilution of 1:200 (under 40x lens).