

Allgemeine Informationen

Katalog-Nr.:

13954-1-AP

Größe:

150ul, Konzentration: 350 µg/ml von Nanodrop;

Wirt:

Kaninchen

Isotyp:

IgG

Immunogen Katalognummer:

AG5065

GenBank-Zugangsnummer:

BC004207

GeneID (NCBI):

11200

Vollständiger Name:

CHK2 checkpoint homolog (S. pombe)

Berechnete Masse:

61 kDa

Beobachtete Masse:

65 kDa

Reinigungsmethode:

Antigen-Affinitätsreinigung

Empfohlene Verdünnungen:
WB 1:500-1:1000
IP 0.5-4.0 µg für IP und 1:500-1:1000 für WB
IF 1:50-1:500

Anwendungen

Geprüfte Anwendungen:

IF, IP, WB, ELISA

In Publikationen genannte Anwendungen:

WB

Getestete Reaktivität:

Human, Maus, Ratte

Zitierte Arten:

Human, Maus, Ratte

Positivkontrollen:

WB : HL-60-Zellen, HeLa-Zellen

IP : HL-60-Zellen,

IF : HepG2-Zellen,

Hintergrundinformationen

Chk2(Checkpoint kinase 2) is also named as CDS1, CHEK2, RAD53 and belongs to the CHK2 subfamily. It is a protein kinase that is activated in response to DNA damage and involved in cell cycle arrest. It also mediates the induction of senescence in fibroblasts, but is dispensable for the induction of telomere dysfunction checkpoints at the stem and progenitor cell level(PMID:20577265). This protein can exist as a dimer (PMID:19782031). Active forms of CHEK2 devoid of phosphorylation at Thr-68 can form unstable dimers(PMID:12386164). Defects in CHEK2 is a cause of susceptibility to breast cancer (BC)(PMID:21618645). It has 12 isoforms produced by alternative splicing.

Bemerkenswerte Veröffentlichungen

Verfasser	Pubmed ID	Journal	Anwendung
Xin Wen	36249018	Front Oncol	WB
Yiti Zhang	36232630	Int J Mol Sci	WB
Yeunting Hsieh	32988875	Anticancer Res	WB

Lagerung

Lagerungsbedingungen:

Bei -20°C lagern. Nach dem Versand ein Jahr lang stabil

Lagerungspuffer:

PBS mit 0.02% Natriumazid und 50% Glycerin pH 7.3.

Aliquotieren ist nicht notwendig bei -20°C Lagerung

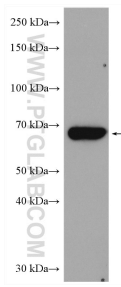
***** 20ul-Größen enthalten 0.1% BSA**

For technical support and original validation data for this product please contact:

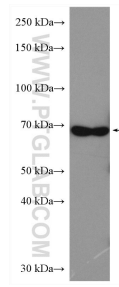
T: 1 (888) 4PTGLAB (1-888-478-4522) (toll free in USA), or 1(312) 455-8498 (outside USA)

 E: proteintech@ptglab.com
 W: ptglab.com
This product is exclusively available under Proteintech Group brand and is not available to purchase from any other manufacturer.

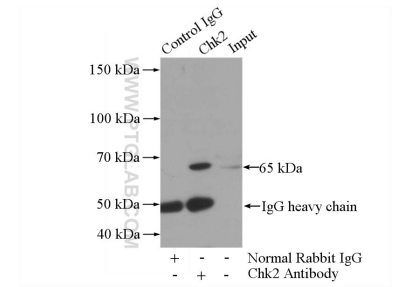
Ausgewählte Validierungsdaten



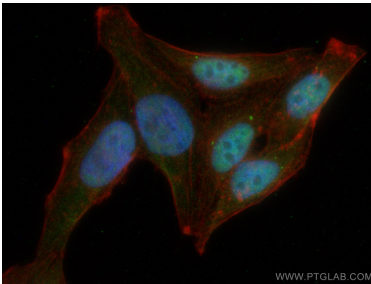
HL-60 cells were subjected to SDS PAGE followed by western blot with 13954-1-AP (Chk2 antibody) at dilution of 1:600 incubated at room temperature for 1.5 hours.



HeLa cells were subjected to SDS PAGE followed by western blot with 13954-1-AP (Chk2 antibody) at dilution of 1:600 incubated at room temperature for 1.5 hours.



IP Result of anti-Chk2 (IP:13954-1-AP, 4ug; Detection:13954-1-AP 1:500) with HL-60 cells lysate 1600ug.



Immunofluorescent analysis of (4% PFA) fixed HepG2 cells using CHEK2 antibody (13954-1-AP) at dilution of 1:200 and CoralLite®488-Conjugated AffiniPure Goat Anti-Rabbit IgG(H+L), CL594-Phalloidin (red).