

Nur für Forschungszwecke

MICAL2 Polyklonaler Antikörper

Katalog-Nr.:13965-1-AP

Vorgestelltes Produkt

10 Publikationen



Allgemeine Informationen

Katalog-Nr.: 13965-1-AP	GenBank-Zugangsnummer: BC044577	Reinigungsmethode: Antigen-Affinitätsreinigung
Größe: 150ul , Konzentration: 700 µg/ml von Nanodrop;	GeneID (NCBI): 9645	Empfohlene Verdünnungen: WB 1:200-1:1000 IHC 1:50-1:500 IF 1:200-1:800
Wirt: Kaninchen	Vollständiger Name: microtubule associated monooxygenase, calponin and LIM domain containing 2	
Isotyp: IgG	Berechnete Masse: 127 kDa	
Immunogen Katalognummer: AG4950	Beobachtete Masse: 95 kDa, 112 kDa	

Anwendungen

Geprüfte Anwendungen: IF, IHC, WB, ELISA	Positivkontrollen: WB : PC-3-Zellen, IHC : humanes Magenkrebsgewebe, humanes Prostatakarzinomgewebe IF : HepG2-Zellen,
In Publikationen genannte Anwendungen: CoIP, IF, IHC, WB	
Getestete Reaktivität: Human, Maus, Ratte	
Zitierte Arten: Human, Maus	
Hinweis-IHC: Antigenmaskierung mit TE-Puffer pH 9,0 empfohlen. (*) Wahlweise kann die Antigenmaskierung auch mit Citratpuffer pH 6,0 erfolgen.	

Hintergrundinformationen

MICALs (Molecules Interacting with CasL) are atypical multidomain flavoenzymes with diverse cellular functions. There are three known isoforms, MICAL1, MICAL2, and MICAL3, as well as the MICAL-like proteins MICAL-L1 and MICAL-L2. MICAL2 has three conserved domains: an N-terminal flavin adenine dinucleotide (FAD) binding domain, a calponin homology (CH) domain, and a Lin11, Isl-1, and Mec-3 (LIM) domain. It has been demonstrated that MICAL2 could regulate actin stress fibers and is required for normal actin organization. In addition, MICAL2-PV, a novel splicing variant of MICAL2, has been reported to be involved in cancer progression of prostate cancer. This antibody can recognize both MICAL2 and MICAL2-PV. This antibody recognizes various isoforms of MICAL2 around 90-95 kDa or 109-112 kDa.

Bemerkenswerte Veröffentlichungen

Verfasser	Pubmed ID	Journal	Anwendung
Jingxia Han	36271377	J Nanobiotechnology	WB,IHC
Chenxiang Qi	34650666	Oxid Med Cell Longev	WB
Ze Zhang	34750518	Oncogene	WB,CoIP,IHC,IF

Lagerung

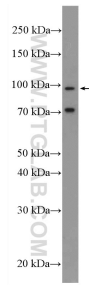
Lagerungsbedingungen:
Bei -20°C lagern. Nach dem Versand ein Jahr lang stabil
Lagerungspuffer:
PBS mit 0.02% Natriumazid und 50% Glycerin pH 7.3.
Aliquotieren ist nicht notwendig bei -20°C Lagerung

*** 20ul-Größen enthalten 0.1% BSA

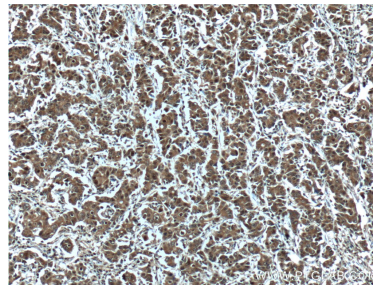
For technical support and original validation data for this product please contact:
T: 1 (888) 4PTGLAB (1-888-478-4522) (toll free in USA), or 1(312) 455-8498 (outside USA)
E: proteintech@ptglab.com
W: ptglab.com

This product is exclusively available under Proteintech Group brand and is not available to purchase from any other manufacturer.

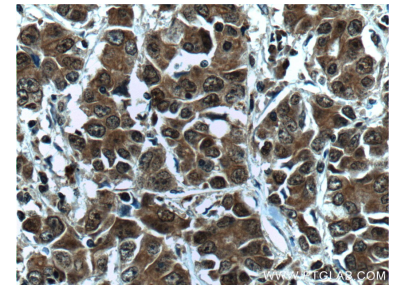
Ausgewählte Validierungsdaten



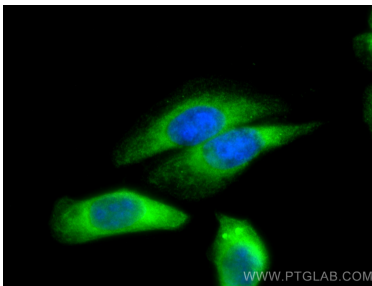
PC-3 cells were subjected to SDS PAGE followed by western blot with 13965-1-AP (MICAL2 Antibody) at dilution of 1:300 incubated at room temperature for 1.5 hours.



Immunohistochemical analysis of paraffin-embedded human stomach cancer tissue slide using 13965-1-AP (MICAL2 Antibody) at dilution of 1:50 (under 10x lens). Heat mediated antigen retrieval with Tris-EDTA buffer (pH 9.0).



Immunohistochemical analysis of paraffin-embedded human stomach cancer tissue slide using 13965-1-AP (MICAL2 Antibody) at dilution of 1:50 (under 40x lens). Heat mediated antigen retrieval with Tris-EDTA buffer (pH 9.0).



Immunofluorescent analysis of (-20°C Methanol) fixed HepG2 cells using MICAL2 antibody (13965-1-AP) at dilution of 1:400 and CoraLite®488-Conjugated AffiniPure Goat Anti-Rabbit IgG(H+L).