

Nur für Forschungszwecke

# TLK2 Polyklonaler Antikörper

Katalog-Nr.:13979-1-AP



## Allgemeine Informationen

<b>Katalog-Nr.:</b> 13979-1-AP	<b>GenBank-Zugangsnummer:</b> BC044925	<b>Reinigungsmethode:</b> Antigen-Affinitätsreinigung
<b>Größe:</b> 150ul , Konzentration: 450 µg/ml von Nanodrop und 173 µg/ml durch die Bradford-Methode mit BSA als Standard;	<b>GeneID (NCBI):</b> 11011	<b>Empfohlene Verdünnungen:</b> WB 1:500-1:2000 IHC 1:50-1:500 IF 1:50-1:500
<b>Wirt:</b> Kaninchen	<b>Vollständiger Name:</b> tousled-like kinase 2	
<b>Isotyp:</b> IgG	<b>Berechnete Masse:</b> 772 aa, 88 kDa	
<b>Immunogen Katalognummer:</b> AG5022	<b>Beobachtete Masse:</b> 85 kDa	

## Anwendungen

<b>Geprüfte Anwendungen:</b> IF, IHC, WB,ELISA	<b>Positivkontrollen:</b> WB : MCF-7-Zellen, HeLa-Zellen
<b>Getestete Reaktivität:</b> Human, Maus, Ratte	<b>IHC :</b> humanes Mammakarzinomgewebe,
<b>Hinweis-IHC: Antigenmaskierung mit TE-Puffer pH 9,0 empfohlen. (*) Wahlweise kann die Antigenmaskierung auch mit Citratpuffer pH 6,0 erfolgen.</b>	<b>IF :</b> HeLa-Zellen,

## Hintergrundinformationen

Tousled-like kinases (TLKs) are a family of serine/threonine kinases located in the nucleus that promote S-phase chromatin assembly and mitotic chromosome segregation. There are two genes in the TLK family-TLK1 and TLK2 (PMID: 14561777). Mutation in TLK2 are associated with an elevated risk of breast cancer (PMID: 27489360). Tousled-like kinase 2 (TLK2) is a key factor in glioblastoma that modulates SRC signaling, thereby driving tumor malignancy. TLK2 is commonly upregulated in glioblastoma, and such upregulation was associated with poor patient outcomes. TLK2 overexpression induced cell growth, migration, invasion, and epithelialmesenchymal transition, and cell cycle arrest, while TLK2 knockdown had the opposite effect (PMID: 30207834). It can detect 3 isoforms of 88, 85 and 82 kDa.

## Lagerung

**Lagerungsbedingungen:**  
Bei -20°C lagern. Nach dem Versand ein Jahr lang stabil  
**Lagerungspuffer:**  
PBS mit 0.02% Natriumazid und 50% Glycerin pH 7.3.  
**Aliquotieren ist nicht notwendig bei -20°C Lagerung**

\*\*\* 20ul-Größen enthalten 0.1% BSA

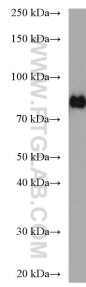
For technical support and original validation data for this product please contact:

T: 1 (888) 4PTGLAB (1-888-478-4522) (toll free  
in USA), or 1(312) 455-8498 (outside USA)

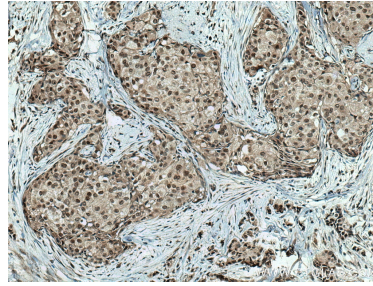
E: proteintech@ptglab.com  
W: ptglab.com

This product is exclusively available under Proteintech Group brand and is not available to purchase from any other manufacturer.

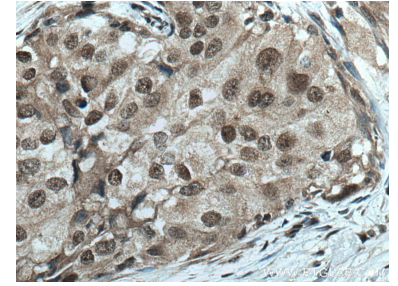
## Ausgewählte Validierungsdaten



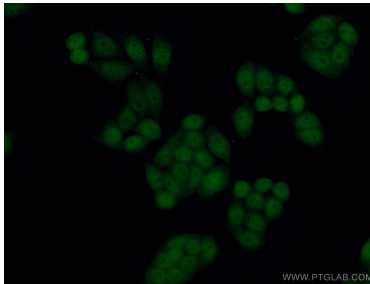
MCF-7 cells were subjected to SDS PAGE followed by western blot with 13979-1-AP (TLK2 antibody) at dilution of 1:1000 incubated at room temperature for 1.5 hours.



Immunohistochemical analysis of paraffin-embedded human breast cancer tissue slide using 13979-1-AP (TLK2 antibody) at dilution of 1:200 (under 10x lens). Heat mediated antigen retrieval with Tris-EDTA buffer (pH 9.0).



Immunohistochemical analysis of paraffin-embedded human breast cancer tissue slide using 13979-1-AP (TLK2 antibody) at dilution of 1:200 (under 40x lens). Heat mediated antigen retrieval with Tris-EDTA buffer (pH 9.0).



Immunofluorescent analysis of (4% PFA) fixed HeLa cells using 13979-1-AP (TLK2 antibody) at dilution of 1:100 and CoralLite488-Conjugated AffiniPure Goat Anti-Rabbit IgG(H+L).