

Nur für Forschungszwecke

# STAG1 Polyklonaler Antikörper

Katalog-Nr.: 14015-1-AP

2 Publikationen



## Allgemeine Informationen

<b>Katalog-Nr.:</b> 14015-1-AP	<b>GenBank-Zugangsnummer:</b> BC064699	<b>Reinigungsmethode:</b> Antigen-Affinitätsreinigung
<b>Größe:</b> 150ul, Konzentration: 300 µg/ml von Nanodrop und 327 µg/ml durch die Bradford-Methode mit BSA als Standard;	<b>GeneID (NCBI):</b> 10274	<b>Empfohlene Verdünnungen:</b> WB 1:500-1:3000 IF 1:50-1:500
<b>Wirt:</b> Kaninchen	<b>Vollständiger Name:</b> stromal antigen 1	
<b>Isotyp:</b> IgG	<b>Berechnete Masse:</b> 144 kDa	
<b>Immunogen Katalognummer:</b> AG5123	<b>Beobachtete Masse:</b> 155 kDa	

## Anwendungen

<b>Geprüfte Anwendungen:</b> IF, WB, ELISA	<b>Positivkontrollen:</b>
<b>In Publikationen genannte Anwendungen:</b> WB	<b>WB:</b> HEK-293T-Zellen, HeLa-Zellen, humanes Herzgewebe, Jurkat-Zellen, MCF-7-Zellen, NIH/3T3-Zellen, Raji-Zellen
<b>Getestete Reaktivität:</b> Human, Maus, Ratte	<b>IF:</b> HeLa-Zellen,
<b>Zitierte Arten:</b> Human, Ratte	

## Hintergrundinformationen

STAG1, also named as SCC3 homolog 1, is a 1258 amino acid protein, which belongs to the SCC3 family. STAG1 interacts directly with RAD21 in cohesin complex and localizes in nucleus. STAG1 is a Component of cohesin complex, which is required for the cohesion of sister chromatids after DNA replication. The cohesin complex apparently forms a large proteinaceous ring within which sister chromatids can be trapped. At anaphase, the complex is cleaved and dissociates from chromatin, allowing sister chromatids to segregate. The cohesin complex may also play a role in spindle pole assembly during mitosis. The calculate molecular weight of STAG1 is 144 kDa, but modified STAG1 is about 145-150 kDa.

## Bemerkenswerte Veröffentlichungen

Verfasser	Pubmed ID	Journal	Anwendung
Gaoyang Chen	35361779	Bone Res	WB
Ena Oreskovic	35149558	Proc Natl Acad Sci U S A	WB

## Lagerung

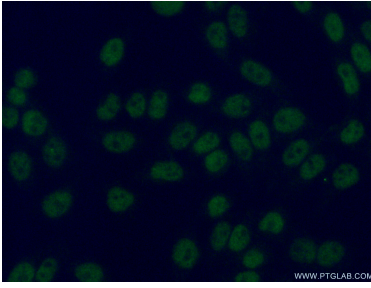
**Lagerungsbedingungen:**  
Bei -20°C lagern. Nach dem Versand ein Jahr lang stabil  
**Lagerungspuffer:**  
PBS mit 0.02% Natriumazid und 50% Glycerin pH 7.3.  
Aliquotieren ist nicht notwendig bei -20°C Lagerung

\*\*\* 20ul-Größen enthalten 0.1% BSA

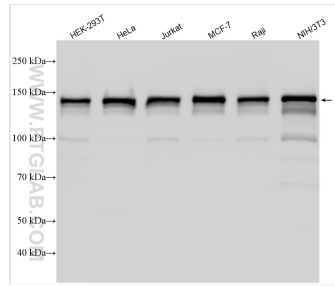
For technical support and original validation data for this product please contact:  
T: 1 (888) 4PTGLAB (1-888-478-4522) (toll free in USA), or 1(312) 455-8498 (outside USA)  
E: proteintech@ptglab.com  
W: ptglab.com

This product is exclusively available under Proteintech Group brand and is not available to purchase from any other manufacturer.

## Ausgewählte Validierungsdaten



Immunofluorescent analysis of (4% PFA) fixed HeLa cells using 14015-1-AP (STAG1 antibody) at dilution of 1:50 and Alexa Fluor 488-conjugated AffiniPure Goat Anti-Rabbit IgG(H+L).



Various lysates were subjected to SDS PAGE followed by western blot with 14015-1-AP (STAG1 antibody) at dilution of 1:1500 incubated at room temperature for 1.5 hours.