

Nur für Forschungszwecke

ZEB2 Polyklonaler Antikörper

Katalog-Nr.:14026-1-AP

Vorgestelltes Produkt

54 Publikationen



Allgemeine Informationen

Katalog-Nr.: 14026-1-AP	GenBank-Zugangsnummer: BC060819	Reinigungsmethode: Antigen-Affinitätsreinigung
Größe: 150ul , Konzentration: 850 µg/ml von Nanodrop;	GeneID (NCBI): 9839	Empfohlene Verdünnungen: WB 1:500-1:1000 IHC 1:50-1:500
Wirt: Kaninchen	Vollständiger Name: zinc finger E-box binding homeobox 2	
Isotyp: IgG	Berechnete Masse: 136 kDa	
Immunogen Katalognummer: AG5171	Beobachtete Masse: 150-170 kDa	

Anwendungen

Geprüfte Anwendungen:

IHC, WB, ELISA

In Publikationen genannte Anwendungen:

IF, IHC, WB

Getestete Reaktivität:

Human

Zitierte Arten:

Human, Maus, Ratte, Zebrafisch

Hinweis-IHC: Antigenmaskierung mit TE-Puffer pH 9,0 empfohlen. (*) Wahlweise kann die Antigenmaskierung auch mit Citratpuffer pH 6,0 erfolgen.

Positivkontrollen:

WB : HEK-293-Zellen, A549-Zellen, HeLa-Zellen, HepG2-Zellen, SGC-7901-Zellen

IHC : humanes Gliomgewebe, humanes Lungenkarzinomgewebe, humanes Nierenzellkarzinomgewebe

Hintergrundinformationen

Zinc finger E-box-binding homeobox (ZEB2) is a key transcription factor that acts as a multifunctional regulator during nervous system development. ZEB2 contains two zinc finger domains and a homeodomain-like sequence and interacts with the TGF- β superfamily signaling regulators, Smads, to regulate the expression of their downstream genes. ZEB2 is expressed in the developing neural tube, as well as in neural crest cells, the hippocampus and the cerebral cortex. ZEB2 has previously been implicated in EMT, cell-cycle progression, apoptosis and senescence. ZEB2 was overexpressed in bladder, ovarian, stomach, pancreatic and squamous cell carcinoma, in the intestinal subtype of stomach cancers, and at the invasive front of CRC where EMT is most prominent. ZEB2 also mediates cell-fate decision in neuronal, T cells and hematopoietic stem cells. The calculated molecular weight of ZEB2 is 136 kDa, but we find the 95 kDa band in some publication(PMID: 27659015)

Bemerkenswerte Veröffentlichungen

Verfasser	Pubmed ID	Journal	Anwendung
Liming Wang	31566718	J Cell Physiol	WB
Rongkun Li	34568024	Front Oncol	WB
Mengying Li	34492118	J Periodontal Res	WB,IHC

Lagerung

Lagerungsbedingungen:

Bei -20°C lagern. Nach dem Versand ein Jahr lang stabil

Lagerungspuffer:

PBS mit 0.02% Natriumazid und 50% Glycerin pH 7.3.

Aliquotieren ist nicht notwendig bei -20°C Lagerung

*** 20ul-Größen enthalten 0.1% BSA

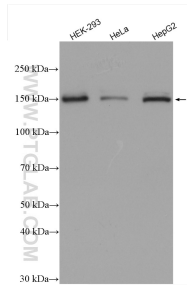
For technical support and original validation data for this product please contact:

T: 1 (888) 4PTGLAB (1-888-478-4522) (toll free in USA), or 1(312) 455-8498 (outside USA)

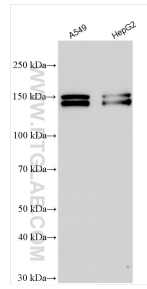
E: proteintech@ptglab.com
W: ptglab.com

This product is exclusively available under Proteintech Group brand and is not available to purchase from any other manufacturer.

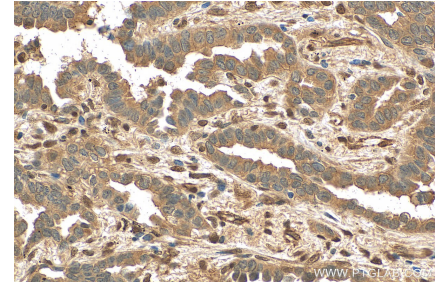
Ausgewählte Validierungsdaten



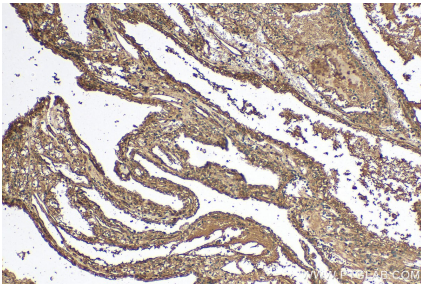
Various lysates were subjected to SDS PAGE followed by western blot with 14026-1-AP (ZEB2 antibody) at dilution of 1:600 incubated at room temperature for 1.5 hours.



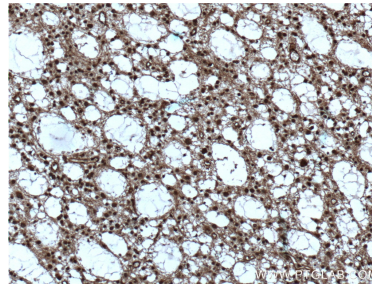
Various lysates were subjected to SDS PAGE followed by western blot with 14026-1-AP (ZEB2 antibody) at dilution of 1:8000 incubated at room temperature for 1.5 hours.



Immunohistochemical analysis of paraffin-embedded human lung cancer tissue slide using 14026-1-AP (ZEB2 antibody) at dilution of 1:200 (under 40x lens). Heat mediated antigen retrieval with Tris-EDTA buffer (pH 9.0).



Immunohistochemical analysis of paraffin-embedded human renal cell carcinoma tissue slide using 14026-1-AP (ZEB2 antibody) at dilution of 1:200 (under 10x lens). Heat mediated antigen retrieval with Tris-EDTA buffer (pH 9.0).



Immunohistochemical analysis of paraffin-embedded human gliomas tissue slide using 14026-1-AP (ZEB2 Antibody) at dilution of 1:200 (under 10x lens). Heat mediated antigen retrieval with Tris-EDTA buffer (pH 9.0).