

Nur für Forschungszwecke

# ROD1 Polyklonaler Antikörper

Katalog-Nr.:14027-1-AP

Vorgestelltes Produkt

5 Publikationen



## Allgemeine Informationen

<b>Katalog-Nr.:</b> 14027-1-AP	<b>GenBank-Zugangsnummer:</b> BC044585	<b>Reinigungsmethode:</b> Antigen-Affinitätsreinigung
<b>Größe:</b> 150ul , Konzentration: 700 µg/ml von Nanodrop;	<b>GeneID (NCBI):</b> 9991	<b>Empfohlene Verdünnungen:</b> WB 1:2000-1:12000 IHC 1:20-1:200
<b>Wirt:</b> Kaninchen	<b>Vollständiger Name:</b> ROD1 regulator of differentiation 1 (S. pombe)	
<b>Isotyp:</b> IgG	<b>Berechnete Masse:</b> 60 kDa	
<b>Immunogen Katalognummer:</b> AG5172	<b>Beobachtete Masse:</b> 50 kDa	

## Anwendungen

### Geprüfte Anwendungen:

IHC, WB, ELISA

### In Publikationen genannte Anwendungen:

CoIP, IHC, WB

### Getestete Reaktivität:

Human, Maus, Ratte

### Zitierte Arten:

Human, Maus

**Hinweis-IHC: Antigendemaskierung mit TE-Puffer pH 9,0 empfohlen. (\*) Wahlweise kann die Antigendemaskierung auch mit Citratpuffer pH 6,0 erfolgen.**

### Positivkontrollen:

WB : HL-60-Zellen, HeLa-Zellen, Jurkat-Zellen, Maus-Thymusgewebe, Ratten-Thymusgewebe

IHC : humanes Lymphomgewebe,

## Hintergrundinformationen

### Bemerkenswerte Veröffentlichungen

Verfasser	Pubmed ID	Journal	Anwendung
Qiong Wu	32477006	Cancer Cell Int	WB,IHC
Ya Zhou	30013660	Oncol Lett	WB
Yingji Chen	35016691	Cancer Cell Int	WB

## Lagerung

### Lagerungsbedingungen:

Bei -20°C lagern. Nach dem Versand ein Jahr lang stabil

### Lagerungspuffer:

PBS mit 0.02% Natriumazid und 50% Glycerin pH 7.3.

Aliquotieren ist nicht notwendig bei -20°C Lagerung

\*\*\* 20ul-Größen enthalten 0.1% BSA

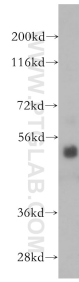
For technical support and original validation data for this product please contact:

T: 1 (888) 4PTGLAB (1-888-478-4522) (toll free in USA), or 1(312) 455-8498 (outside USA)

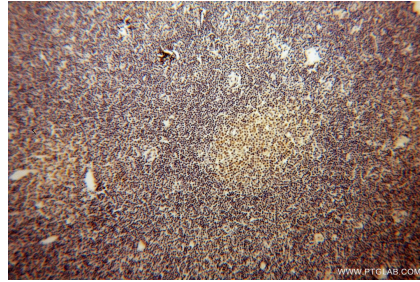
E: proteintech@ptglab.com  
W: ptglab.com

This product is exclusively available under Proteintech Group brand and is not available to purchase from any other manufacturer.

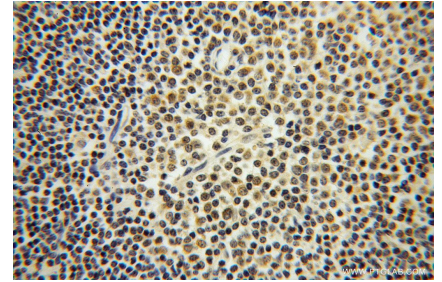
## Ausgewählte Validierungsdaten



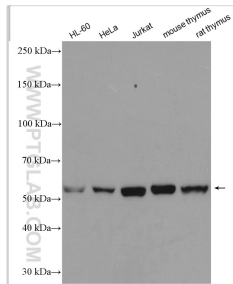
HL-60 cells were subjected to SDS PAGE followed by western blot with 14027-1-AP (ROD1 antibody) at dilution of 1:500 incubated at room temperature for 1.5 hours.



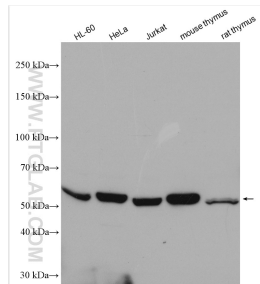
Immunohistochemical analysis of paraffin-embedded human lymphoma using 14027-1-AP (ROD1 antibody) at dilution of 1:100 (under 10x lens).



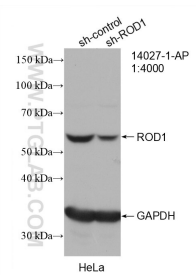
Immunohistochemical analysis of paraffin-embedded human lymphoma using 14027-1-AP (ROD1 antibody) at dilution of 1:100 (under 40x lens).



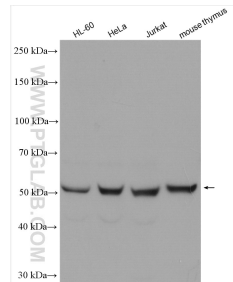
Various lysates were subjected to SDS PAGE followed by western blot with 14027-1-AP (ROD1 antibody) at dilution of 1:6000 incubated at room temperature for 1.5 hours.



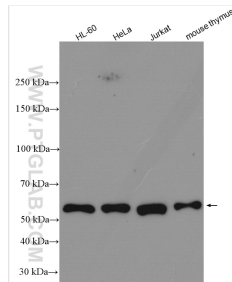
Various lysates were subjected to SDS PAGE followed by western blot with 14027-1-AP (ROD1 antibody) at dilution of 1:6000 incubated at room temperature for 1.5 hours.



WB result of ROD1 antibody (14027-1-AP; 1:4000; incubated at room temperature for 1.5 hours) with sh-Control and sh-ROD1 transfected HeLa cells.



Various lysates were subjected to SDS PAGE followed by western blot with 14027-1-AP (ROD1 antibody) at dilution of 1:6000 incubated at room temperature for 1.5 hours.



Various lysates subjected to SDS PAGE followed by western blot with 14027-1-AP (ROD1 antibody) at dilution of 1:6000 incubated at room temperature for 1.5 hours.