

Nur für Forschungszwecke

# FATP2 Polyklonaler Antikörper

Katalog-Nr.:14048-1-AP

Vorgestelltes Produkt

30 Publikationen



## Allgemeine Informationen

**Katalog-Nr.:**

14048-1-AP

**Größe:**

150ul , Konzentration: 500 µg/ml von Nanodrop;

**Wirt:**

Kaninchen

**Isotyp:**

IgG

**Immunogen Katalognummer:**

AG5217

**GenBank-Zugangsnummer:**

BC057770

**GeneID (NCBI):**

11001

**Vollständiger Name:**

solute carrier family 27 (fatty acid transporter), member 2

**Berechnete Masse:**

567 aa, 65 kDa

**Beobachtete Masse:**

70 kDa

**Reinigungsmethode:**

Antigen-Affinitätsreinigung

**Empfohlene Verdünnungen:**

WB 1:2000-1:16000

IP 0.5-4.0 µg für IP und 1:500-1:1000

für WB

IHC 1:250-1:1000

IF 1:10-1:100

## Anwendungen

**Geprüfte Anwendungen:**

IF, IHC, IP, WB, ELISA

**In Publikationen genannte Anwendungen:**

CoIP, IF, IHC, WB

**Getestete Reaktivität:**

Human, Maus, Ratte

**Zitierte Arten:**

Human, Maus, Ratte

**Positivkontrollen:**

WB : Mausnierengewebe, Mauslebergewebe, Rattenlebergewebe

IP : HepG2-Zellen,

IHC : humanes Leberkarzinomgewebe, humanes Nierengewebe

IF : HepG2-Zellen,

**Hinweis-IHC: Antigenmaskierung mit TE-Puffer pH 9,0 empfohlen. (\*) Wahlweise kann die Antigenmaskierung auch mit Citratpuffer pH 6,0 erfolgen.**

## Hintergrundinformationen

FATP2 is a member of the FATP family which functions in lipid and bile metabolism. It is a 70-kDa protein predominantly expressed in liver and kidney. Kidney FATP2 is localized exclusively to proximal tubule epithelial cells along the apical but not the basolateral membrane, and regulates lipoapoptosis. FATP2 is involved in metabolism-related diseases including nonalcoholic fatty liver disease (NAFLD) and type 2 diabetes mellitus (T2DM), and is a potential clinical biomarker and therapeutic target.

## Bemerkenswerte Veröffentlichungen

Verfasser	Pubmed ID	Journal	Anwendung
Li-Sha Ran	36115008	J Nat Med	WB,IHC
Lili Cheng	28871336	Arch Toxicol	WB
Liping Luo	36058506	Cell Mol Gastroenterol Hepatol	WB

## Lagerung

**Lagerungsbedingungen:**

Bei -20°C lagern. Nach dem Versand ein Jahr lang stabil

**Lagerungspuffer:**

PBS mit 0.02% Natriumazid und 50% Glycerin pH 7.3.

Aliquotieren ist nicht notwendig bei -20°C Lagerung

\*\*\* 20ul-Größen enthalten 0.1% BSA

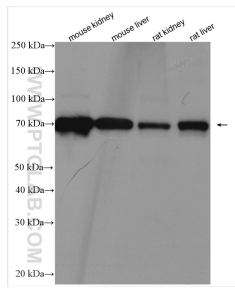
For technical support and original validation data for this product please contact:

T: 1 (888) 4PTGLAB (1-888-478-4522) (toll free in USA), or 1(312) 455-8498 (outside USA)

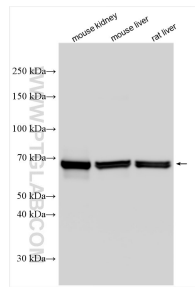
E: proteintech@ptglab.com  
W: ptglab.com

This product is exclusively available under Proteintech Group brand and is not available to purchase from any other manufacturer.

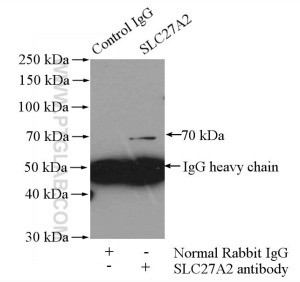
## Ausgewählte Validierungsdaten



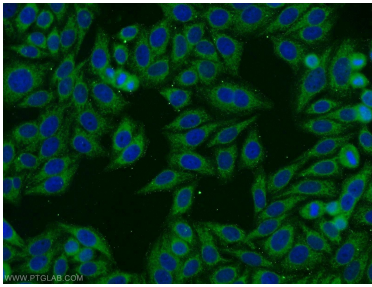
Various lysates were subjected to SDS PAGE followed by western blot with 14048-1-AP (FATP2 antibody) at dilution of 1:2000 incubated at room temperature for 1.5 hours.



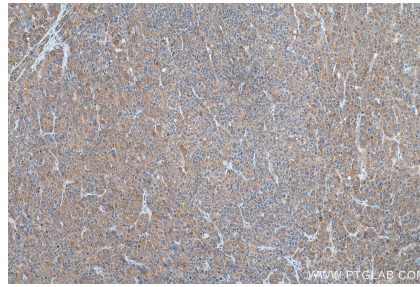
Various lysates were subjected to SDS PAGE followed by western blot with 14048-1-AP (FATP2 antibody) at dilution of 1:8000 incubated at room temperature for 1.5 hours.



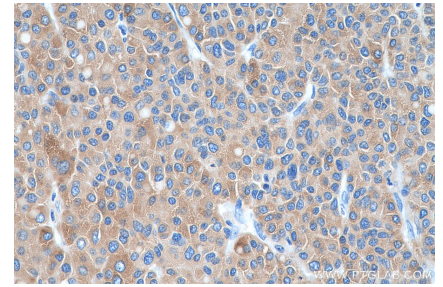
IP Result of anti-SLC27A2 (IP:14048-1-AP, 4ug; Detection:14048-1-AP 1:500) with HepG2 cells lysate 3200ug.



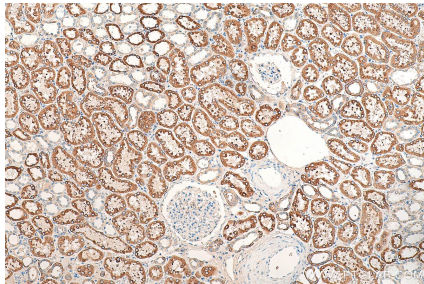
Immunofluorescent analysis of HepG2 cells using 14048-1-AP (SLC27A2 antibody) at dilution of 1:25 and Alexa Fluor 488-conjugated AffiniPure Goat Anti-Rabbit IgG(H+L).



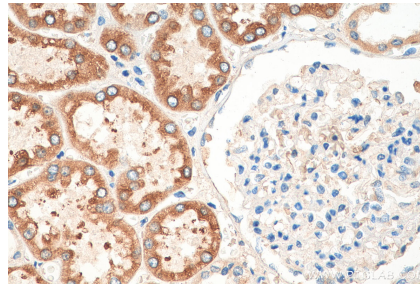
Immunohistochemical analysis of paraffin-embedded human liver cancer tissue slide using 14048-1-AP (FATP2 antibody) at dilution of 1:500 (under 10x lens). Heat mediated antigen retrieval with Tris-EDTA buffer (pH 9.0).



Immunohistochemical analysis of paraffin-embedded human liver cancer tissue slide using 14048-1-AP (FATP2 antibody) at dilution of 1:500 (under 40x lens). Heat mediated antigen retrieval with Tris-EDTA buffer (pH 9.0).



Immunohistochemical analysis of paraffin-embedded human kidney tissue slide using 14048-1-AP (FATP2 antibody) at dilution of 1:200 (under 10x lens). Heat mediated antigen retrieval with Tris-EDTA buffer (pH 9.0).



Immunohistochemical analysis of paraffin-embedded human kidney tissue slide using 14048-1-AP (FATP2 antibody) at dilution of 1:200 (under 40x lens). Heat mediated antigen retrieval with Tris-EDTA buffer (pH 9.0).