

Nur für Forschungszwecke

CDK6 Polyklonaler Antikörper

Katalog-Nr.:14052-1-AP

Vorgestelltes Produkt

132 Publikationen



Allgemeine Informationen

Katalog-Nr.: 14052-1-AP	GenBank-Zugangsnummer: BC027989	Reinigungsmethode: Antigen-Affinitätsreinigung
Größe: 150ul , Konzentration: 600 µg/ml von Nanodrop;	GeneID (NCBI): 1021	Empfohlene Verdünnungen: WB 1:1000-1:6000
Wirt: Kaninchen	Vollständiger Name: cyclin-dependent kinase 6	IP 0.5-4.0 ug für IP und 1:500-1:2000 für WB
Isotyp: IgG	Berechnete Masse: 326 aa, 36 kDa	IHC 1:50-1:500
Immunogen Katalognummer: AG5275	Beobachtete Masse: 36-40 kDa	IF 1:50-1:500

Anwendungen

Geprüfte Anwendungen:
FC (Intra), IF, IHC, IP, WB, ELISA

In Publikationen genannte Anwendungen:
CoIP, IF, IHC, WB

Getestete Reaktivität:
Human, Maus, Ratte

Zitierte Arten:
Human, Maus, Zebrafisch

Hinweis-IHC: Antigenmaskierung mit TE-Puffer pH 9,0 empfohlen. (*) Wahlweise kann die Antigenmaskierung auch mit Citratpuffer pH 6,0 erfolgen.

Positivkontrollen:

WB: HEK-293-Zellen, C2C12-Zellen, HeLa-Zellen, Jurkat-Zellen, K-562-Zellen, MOLT-4-Zellen

IP: Jurkat-Zellen,

IHC: humanes Lungenkarzinomgewebe, humanes Endometriumkarzinomgewebe

IF: HeLa-Zellen,

Hintergrundinformationen

CDK6(Cyclin-dependent kinase 6) is involved in initiation and maintenance of cell cycle exit during cell differentiation and it prevents cell proliferation and regulates negatively cell differentiation, but is required for the proliferation of specific cell types.The molecular weight of CDK6 is 36-40 KDa (PMID: 23563707).

Bemerkenswerte Veröffentlichungen

Verfasser	Pubmed ID	Journal	Anwendung
Xiaoman Chen	30207732	Mol Pharm	WB
He Cao	33046987	J Cancer	WB
Fang Li	36116238	Ecotoxicol Environ Saf	WB

Lagerung

Lagerungsbedingungen:

Bei -20°C lagern. Nach dem Versand ein Jahr lang stabil

Lagerungspuffer:

PBS mit 0.02% Natriumazid und 50% Glycerin pH 7.3.

Aliquotieren ist nicht notwendig bei -20°C Lagerung

*** 20ul-Größen enthalten 0.1% BSA

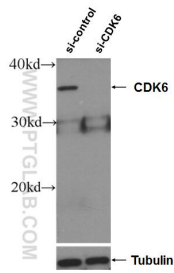
For technical support and original validation data for this product please contact:

T: 1 (888) 4PTGLAB (1-888-478-4522) (toll free in USA), or 1(312) 455-8498 (outside USA)

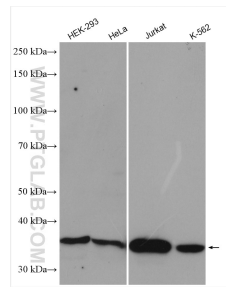
E: proteintech@ptglab.com
W: ptglab.com

This product is exclusively available under Proteintech Group brand and is not available to purchase from any other manufacturer.

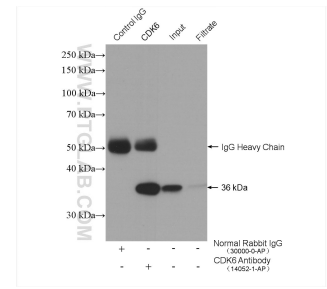
Ausgewählte Validierungsdaten



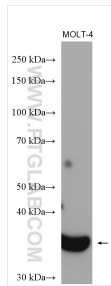
WB result of CDK6 antibody (14052-1-AP; 1:2000; incubated at room temperature for 1.5 hours) with sh-Control and sh-CDK6 transfected HeLa cells.



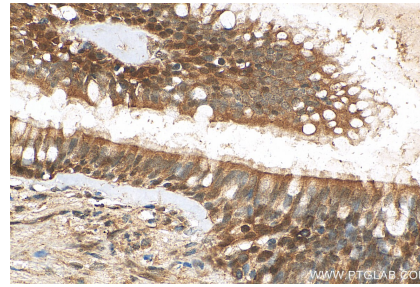
Various lysates were subjected to SDS PAGE followed by western blot with 14052-1-AP (CDK6 antibody) at dilution of 1:3000 incubated at room temperature for 1.5 hours.



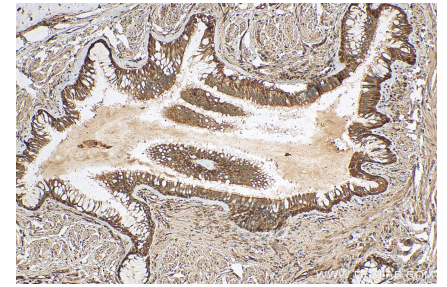
IP result of anti-CDK6 (IP:14052-1-AP, 4ug; Detection:14052-1-AP 1:1000) with Jurkat cells lysate 2880 ug.



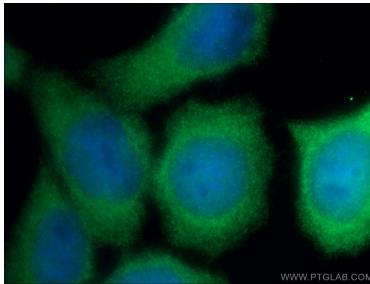
MOLT-4 cells were subjected to SDS PAGE followed by western blot with 14052-1-AP (CDK6 antibody) at dilution of 1:3000 incubated at room temperature for 1.5 hours.



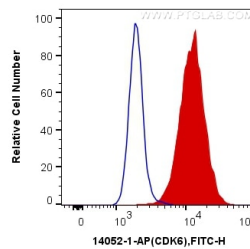
Immunohistochemical analysis of paraffin-embedded human lung cancer tissue slide using 14052-1-AP (CDK6 antibody) at dilution of 1:200 (under 40x lens). Heat mediated antigen retrieval with Tris-EDTA buffer (pH 9.0).



Immunohistochemical analysis of paraffin-embedded human lung cancer tissue slide using 14052-1-AP (CDK6 antibody) at dilution of 1:200 (under 10x lens). Heat mediated antigen retrieval with Tris-EDTA buffer (pH 9.0).



Immunofluorescent analysis of (-20°C Ethanol) fixed HeLa cells using 14052-1-AP (CDK6 antibody) at dilution of 1:50 and Alexa Fluor 488-conjugated AffiniPure Goat Anti-Rabbit IgG(H+L).



1X10⁶ HeLa cells were intracellularly stained with 0.4 ug Anti-Human CDK6 (14052-1-AP) and CoraLite®488-Conjugated AffiniPure Goat Anti-Rabbit IgG(H+L) at dilution 1:1000 (red), or 0.4 ug Control Antibody. Cells were fixed with 4% PFA and permeabilized with Flow Cytometry Perm Buffer (PF00011-C).