

Nur für Forschungszwecke

# PARK2/Parkin Polyklonaler Antikörper



Katalog-Nr.: 14060-1-AP

Vorgestelltes Produkt

155 Publikationen

## Allgemeine Informationen

<b>Katalog-Nr.:</b> 14060-1-AP	<b>GenBank-Zugangsnummer:</b> BC022014	<b>Reinigungsmethode:</b> Antigen-Affinitätsreinigung
<b>Größe:</b> 150ul, Konzentration: 600 µg/ml von Nanodrop;	<b>GeneID (NCBI):</b> 5071	<b>Empfohlene Verdünnungen:</b> WB 1:1000-1:4000 IHC 1:50-1:500 IF 1:50-1:500
<b>Wirt:</b> Kaninchen	<b>Vollständiger Name:</b> Parkinson disease (autosomal recessive, juvenile) 2, parkin	
<b>Isotyp:</b> IgG	<b>Berechnete Masse:</b> 52 kDa	
<b>Immunogen Katalognummer:</b> AG5092	<b>Beobachtete Masse:</b> 42-52 kDa	

## Anwendungen

### Geprüfte Anwendungen:

IF, IHC, WB, ELISA

### In Publikationen genannte Anwendungen:

CoIP, IF, IHC, IP, WB

### Getestete Reaktivität:

Human, Maus, Ratte

### Zitierte Arten:

Hausschwein, Huhn, Human, Maus, Ratte, Rind

**Hinweis-IHC: Antigendemaskierung mit TE-Puffer pH 9,0 empfohlen. (\*) Wahlweise kann die Antigendemaskierung auch mit Citratpuffer pH 6,0 erfolgen.**

### Positivkontrollen:

**WB:** C6-Zellen, HEK-293-Zellen, Maushirngewebe, Mauslebergewebe, PC-12-Zellen, SH-SY5Y-Zellen

**IHC:** Mausnierengewebe, Maushirngewebe

**IF:** SH-SY5Y-Zellen, Mausherzgewebe, Maushirngewebe

## Hintergrundinformationen

Parkin, a RING-type E3 ubiquitin-protein ligase, is involved in the ubiquitination pathway and contributes to protection from neurotoxicity induced by unfolded protein stresses. Its ubiquitin-protein ligase activity promotes the degradation of a variety of proteins including itself. Mutations in Parkin are implicated in the pathogenesis of autosomal recessive familial Parkinson's disease. It has 8 isoforms produced by alternative splicing with molecular weights of 24, 31, 36 and 42-52 kDa. Sometimes an additional band of 70 kDa or 110 kDa may be detected, which is caused by ubiquitination modification or formation of Parkin complex (PMID: 10976934, PMID: 18190519).

## Bemerkenswerte Veröffentlichungen

Verfasser	Pubmed ID	Journal	Anwendung
Wu Xiuquan	34600073	Neuroscience	IF, WB
Xudong Yao	30273654	Pharmacol Res	WB
Ying Chen	36163342	Cell Death Dis	WB

## Lagerung

### Lagerungsbedingungen:

Bei -20°C lagern. Nach dem Versand ein Jahr lang stabil

### Lagerungspuffer:

PBS mit 0.02% Natriumazid und 50% Glycerin pH 7.3.

Aliquotieren ist nicht notwendig bei -20°C Lagerung

\*\*\* 20ul-Größen enthalten 0.1% BSA

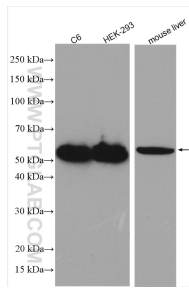
For technical support and original validation data for this product please contact:

T: 1 (888) 4PTGLAB (1-888-478-4522) (toll free in USA), or 1(312) 455-8498 (outside USA)

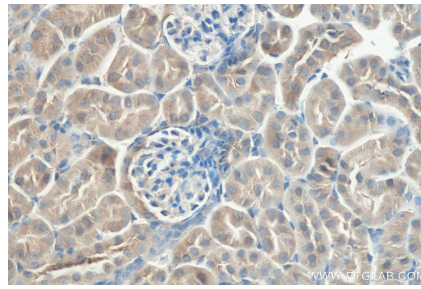
E: proteintech@ptglab.com  
W: ptglab.com

This product is exclusively available under Proteintech Group brand and is not available to purchase from any other manufacturer.

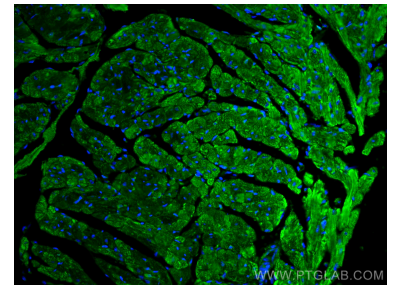
## Ausgewählte Validierungsdaten



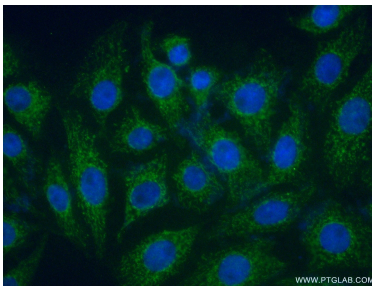
Various lysates were subjected to SDS PAGE followed by western blot with 14060-1-AP (PARK2/Parkin antibody) at dilution of 1:2000 incubated at room temperature for 1.5 hours.



Immunohistochemical analysis of paraffin-embedded mouse kidney tissue slide using 14060-1-AP (PARK2/Parkin antibody) at dilution of 1:200 (under 40x lens). Heat mediated antigen retrieval with Tris-EDTA buffer (pH 9.0).



Immunofluorescent analysis of (4% PFA) fixed mouse heart tissue using PARK2/Parkin antibody (14060-1-AP) at dilution of 1:200 and CoraLite®488-Conjugated AffiniPure Goat Anti-Rabbit IgG(H+L).



Immunofluorescent analysis of (4% PFA) fixed SH-SY5Y cells using 14060-1-AP (PARK2 antibody) at dilution of 1:50 and Alexa Fluor 488-conjugated AffiniPure Goat Anti-Rabbit IgG(H+L).