

Nur für Forschungszwecke

INTS5 Polyklonaler Antikörper

Katalog-Nr.:14069-1-AP

5 Publikationen



Allgemeine Informationen

Katalog-Nr.:

14069-1-AP

Größe:

150ul, Konzentration: 400 µg/ml von Nanodrop und 287 µg/ml durch die Bradford-Methode mit BSA als Standard;

Wirt:

Kaninchen

Isotyp:

IgG

Immunogen Katalognummer:

AG5129

GenBank-Zugangsnummer:

BC060841

GeneID (NCBI):

80789

Vollständiger Name:

integrator complex subunit 5

Berechnete Masse:

108 kDa

Beobachtete Masse:

108 kDa

Reinigungsmethode:

Antigen-Affinitätsreinigung

Empfohlene Verdünnungen:

WB 1:1000-1:6000

IP 0.5-4.0 ug für IP und 1:500-1:2000

für WB

IHC 1:50-1:500

IF 1:20-1:200

Anwendungen

Geprüfte Anwendungen:

IF, IHC, IP, WB, ELISA

In Publikationen genannte Anwendungen:

WB

Getestete Reaktivität:

Human, Maus, Ratte

Zitierte Arten:

Human, Maus

Hinweis-IHC: Antigendemaskierung mit TE-Puffer pH 9,0 empfohlen. (*) Wahlweise kann die Antigendemaskierung auch mit Citratpuffer pH 6,0 erfolgen.

Positivkontrollen:

WB: HeLa-Zellen, humanes Hirngewebe, NIH/3T3-Zellen, SKOV-3-Zellen

IP: HeLa-Zellen,

IHC: humanes Prostatakarzinomgewebe,

IF: HeLa-Zellen,

Hintergrundinformationen

INTS5, also named as INT5 and KIAA1698, is a component of the Integrator complex which involved in the small nuclear RNAs (snRNA) U1 and U2 transcription and in their 3'-box-dependent processing. The Integrator complex is associated with the C-terminal domain (CTD) of RNA polymerase II largest subunit (POLR2A) and is recruited to the U1 and U2 snRNAs genes.

Bemerkenswerte Veröffentlichungen

Verfasser	Pubmed ID	Journal	Anwendung
Hai Zheng	33243860	Science	WB
Lauren G. Mascibroda	36229431	Nat Commun	WB
Xinxin Wang	35476980	Cell Rep	WB

Lagerung

Lagerungsbedingungen:

Bei -20°C lagern. Nach dem Versand ein Jahr lang stabil

Lagerungspuffer:

PBS mit 0.02% Natriumazid und 50% Glycerin pH 7.3.

Aliquotieren ist nicht notwendig bei -20°C Lagerung

*** 20ul-Größen enthalten 0.1% BSA

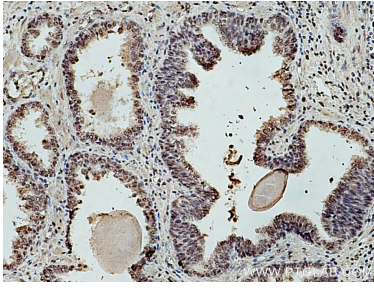
For technical support and original validation data for this product please contact:

T: 1 (888) 4PTGLAB (1-888-478-4522) (toll free in USA), or 1(312) 455-8498 (outside USA)

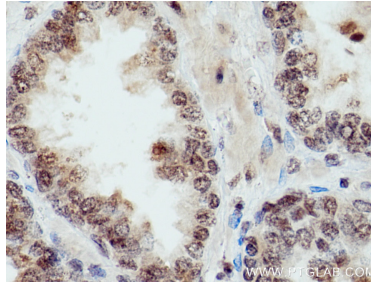
E: proteintech@ptglab.com
W: ptglab.com

This product is exclusively available under Proteintech Group brand and is not available to purchase from any other manufacturer.

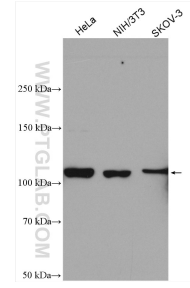
Ausgewählte Validierungsdaten



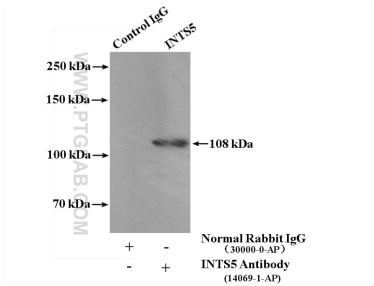
Immunohistochemical analysis of paraffin-embedded human prostate cancer tissue slide using 14069-1-AP (INTS5 antibody) at dilution of 1:200 (under 10x lens). Heat mediated antigen retrieval with Tris-EDTA buffer (pH 9.0).



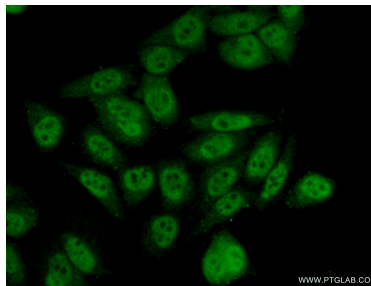
Immunohistochemical analysis of paraffin-embedded human prostate cancer tissue slide using 14069-1-AP (INTS5 antibody) at dilution of 1:200 (under 40x lens). Heat mediated antigen retrieval with Tris-EDTA buffer (pH 9.0).



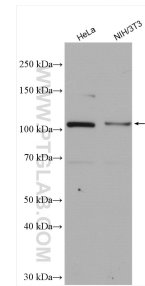
Various lysates were subjected to SDS PAGE followed by western blot with 14069-1-AP (INTS5 antibody) at dilution of 1:3000 incubated at room temperature for 1.5 hours.



IP Result of anti-INTS5 (IP:14069-1-AP, 4ug; Detection:14069-1-AP 1:1000) with HeLa cells lysate 2000ug.



Immunofluorescent analysis of (10% Formaldehyde) fixed HeLa cells using 14069-1-AP (INTS5 antibody) at dilution of 1:50 and Alexa Fluor 488-conjugated AffiniPure Goat Anti-Rabbit IgG(H+L).



Various lysates were subjected to SDS PAGE followed by western blot with 14069-1-AP (INTS5 antibody) at dilution of 1:2000 incubated at room temperature for 1.5 hours.