

Nur für Forschungszwecke

# SRPK1 Polyklonaler Antikörper

Katalog-Nr.: 14073-1-AP

4 Publikationen



## Allgemeine Informationen

Katalog-Nr.:  
14073-1-AP

Größe:  
150ul, Konzentration: 500 µg/ml von  
Nanodrop und 267 µg/ml durch die  
Bradford-Methode mit BSA als  
Standard;

Wirt:  
Kaninchen

Isotyp:  
IgG

Immunogen Katalognummer:  
AG5149

GenBank-Zugangsnummer:  
BC038292

GeneID (NCBI):  
6732

Vollständiger Name:  
SFRS protein kinase 1

Berechnete Masse:  
92.4 kDa

Beobachtete Masse:  
95 kDa

Reinigungsmethode:

Antigen-Affinitätsreinigung

Empfohlene Verdünnungen:

WB 1:1000-1:4000

IP 0.5-4.0 µg für IP und 1:500-1:1000

für WB

IHC 1:20-1:200

IF 1:10-1:100

## Anwendungen

Geprüfte Anwendungen:

FC, IF, IHC, IP, WB, ELISA

In Publikationen genannte Anwendungen:

CoIP, IF, WB

Getestete Reaktivität:

Human, Maus

Zitierte Arten:

Human, Maus

**Hinweis-IHC: Antigendemaskierung mit TE-Puffer pH 9,0 empfohlen. (\*) Wahlweise kann die Antigendemaskierung auch mit Citratpuffer pH 6,0 erfolgen.**

Positivkontrollen:

WB: Jurkat-Zellen, L02-Zellen

IP: Maushodengewebe,

IHC: humanes Mammakarzinomgewebe, humanes Hodengewebe

IF: SH-SY5Y-Zellen,

## Hintergrundinformationen

SRPK1 (serine-arginine protein kinase 1) is a protein kinase that specifically phosphorylates proteins containing serine-arginine-rich domains. Its substrates include a family of SR proteins that are key regulators of mRNA AS (alternative splicing). SRPK1 may be localized both in the cytoplasm and nucleus and translocates between these compartments under various conditions (e.g. cell cycle and stress). It is able to phosphorylate SR proteins both in cytoplasm and nucleus (the significance of which remains incompletely understood) and thus regulate the activity of these proteins by affecting their ability to bind other proteins and/or RNA as well as their intracellular localization. (PMID:22817743). This protein has 2 isoforms produced by alternative splicing.

## Bemerkenswerte Veröffentlichungen

Verfasser	Pubmed ID	Journal	Anwendung
Yufeng Li	34614409	Cell Metab	WB, CoIP
Guanghai Hu	32194790	J Cancer	WB
Li Wang	29503206	Cell Chem Biol	WB

## Lagerung

Lagerungsbedingungen:

Bei -20°C lagern. Nach dem Versand ein Jahr lang stabil

Lagerungspuffer:

PBS mit 0.02% Natriumazid und 50% Glycerin pH 7.3.

Aliquotieren ist nicht notwendig bei -20°C Lagerung

\*\*\* 20ul-Größen enthalten 0.1% BSA

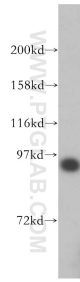
For technical support and original validation data for this product please contact:

T: 1 (888) 4PTGLAB (1-888-478-4522) (toll free in USA), or 1(312) 455-8498 (outside USA)

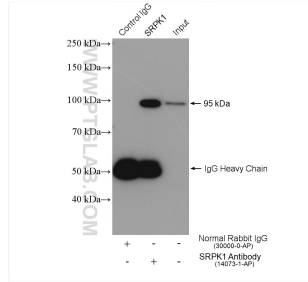
E: proteintech@ptglab.com  
W: ptglab.com

This product is exclusively available under Proteintech Group brand and is not available to purchase from any other manufacturer.

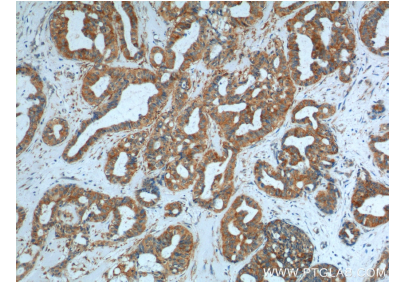
## Ausgewählte Validierungsdaten



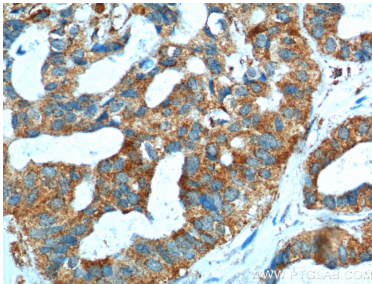
Jurkat cells were subjected to SDS PAGE followed by western blot with 14073-1-AP (SRPK1 antibody) at dilution of 1:1000 incubated at room temperature for 1.5 hours.



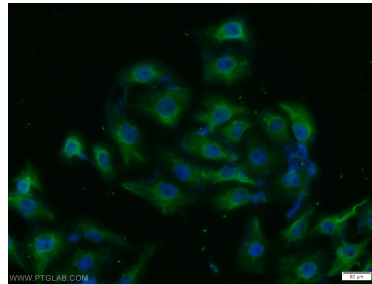
IP result of anti-SRPK1(IP:14073-1-AP, 4ug; Detection:14073-1-AP 1:500) with mouse testis tissue lysate 2040 ug.



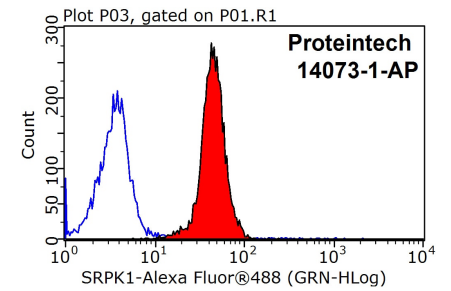
Immunohistochemical analysis of paraffin-embedded human breast cancer tissue slide using 14073-1-AP (SRPK1 Antibody) at dilution of 1:200 (under 10x lens).



Immunohistochemical analysis of paraffin-embedded human breast cancer tissue slide using 14073-1-AP (SRPK1 Antibody) at dilution of 1:200 (under 40x lens).



Immunofluorescent analysis of SH-SY5Y cells using 14073-1-AP (SRPK1 antibody) at dilution of 1:25 and Alexa Fluor 488-conjugated AffiniPure Goat Anti-Rabbit IgG(H+L).



1X10<sup>6</sup> MCF-7 cells were stained with 0.2ug SRPK1 antibody (14073-1-AP, red) and control antibody (blue). Fixed with 90% MeOH blocked with 3% BSA (30 min). Alexa Fluor 488-conjugated AffiniPure Goat Anti-Rabbit IgG(H+L) with dilution 1:1500.