

Nur für Forschungszwecke

# SREBF1 Polyklonaler Antikörper

Katalog-Nr.:14088-1-AP

Vorgestelltes Produkt

146 Publikationen



## Allgemeine Informationen

<b>Katalog-Nr.:</b> 14088-1-AP	<b>GenBank-Zugangsnummer:</b> BC063281	<b>Reinigungsmethode:</b> Antigen-Affinitätsreinigung
<b>Größe:</b> 150ul , Konzentration: 750 µg/ml von Nanodrop;	<b>GeneID (NCBI):</b> 6720	<b>Empfohlene Verdünnungen:</b> WB 1:1000-1:4000 IP 0.5-4.0 ug für IP und 1:500-1:1000 für WB
<b>Wirt:</b> Kaninchen	<b>Vollständiger Name:</b> sterol regulatory element binding transcription factor 1	<b>IHC 1:50-1:500</b> <b>IF 1:50-1:500</b>
<b>Isotyp:</b> IgG	<b>Berechnete Masse:</b> 1177 aa, 125 kDa	
<b>Immunogen Katalognummer:</b> AG5219	<b>Beobachtete Masse:</b> 125 kDa, 68 kDa	

## Anwendungen

### Geprüfte Anwendungen:

IF, IHC, IP, WB, ELISA

### In Publikationen genannte Anwendungen:

ChIP, CoIP, IF, IHC, IP, WB

### Getestete Reaktivität:

Human

### Zitierte Arten:

Hausschwein, Huhn, Human, Rind, Ziege

### Positivkontrollen:

**WB** : HeLa-Zellen, L02-Zellen, Mauslebergewebe, MCF-7-Zellen, Rattenlebergewebe

**IP** : L02-Zellen,

**IHC** : humanes Nierengewebe, humanes Skelettmuskelgewebe

**IF** : HeLa-Zellen,

**Hinweis-IHC: Antigenmaskierung mit TE-Puffer pH 9,0 empfohlen. (\*) Wahlweise kann die Antigenmaskierung auch mit Citratpuffer pH 6,0 erfolgen.**

## Hintergrundinformationen

SREBF1, also named as BHLHD1 and SREBP1, contains one basic helix-loop-helix (bHLH) domain and belongs to the SREBP family. It is a transcriptional activator required for lipid homeostasis. The SREBPs are synthesized as precursors anchored to endoplasmic reticulum (ER) membranes and complexed with SCAP. When the cellular cholesterol level is low, SREBP-SCAP complexes move to the Golgi apparatus, where SREBPs undergo a two-step proteolytic processing, leading to the release of the mature form, an N-terminal fragment, i.e. basic helix-loop-helix leucine zipper transcription factor. These factors enter the nucleus where they bind to sterol regulatory elements (SRE) in the promoter regions of a number of genes whose products mediate the synthesis of cholesterol and fatty acids. [PMID: 21698267]. This antibody can recognize the 125 kDa precursor form and the 68 kDa mature form of human SREBF1.

## Bemerkenswerte Veröffentlichungen

Verfasser	Pubmed ID	Journal	Anwendung
Zhongwen Feng	33182043	Int Immunopharmacol	WB
Shaofan Hu	36174386	Redox Biol	WB
Mingyue Tao	34518524	Cell Death Dis	WB,IF

## Lagerung

### Lagerungsbedingungen:

Bei -20°C lagern. Nach dem Versand ein Jahr lang stabil

### Lagerungspuffer:

PBS mit 0.02% Natriumazid und 50% Glycerin pH 7.3.

Aliquotieren ist nicht notwendig bei -20°C Lagerung

\*\*\* 20ul-Größen enthalten 0.1% BSA

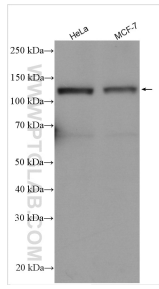
For technical support and original validation data for this product please contact:

T: 1 (888) 4PTGLAB (1-888-478-4522) (toll free in USA), or 1(312) 455-8498 (outside USA)

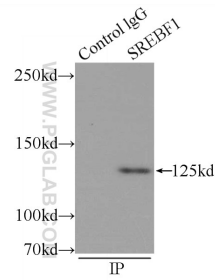
E: proteintech@ptglab.com  
W: ptglab.com

This product is exclusively available under Proteintech Group brand and is not available to purchase from any other manufacturer.

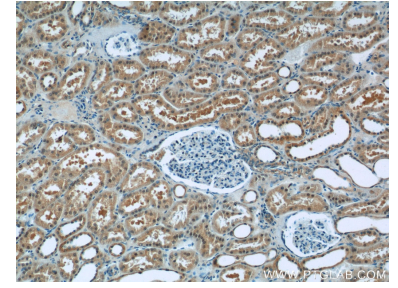
## Ausgewählte Validierungsdaten



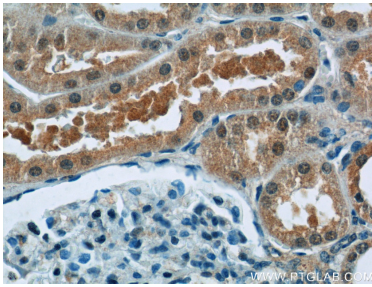
Various lysates were subjected to SDS PAGE followed by western blot with 14088-1-AP (SREBF1 antibody) at dilution of 1:2000 incubated at room temperature for 1.5 hours.



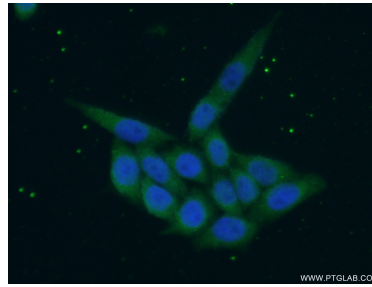
IP Result of anti-SREBF1 (IP:14088-1-AP, 4ug; Detection:14088-1-AP 1:600) with L02 cells lysate 1500ug.



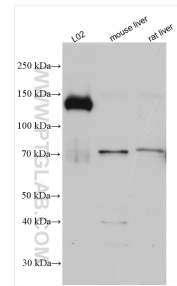
Immunohistochemical analysis of paraffin-embedded human kidney tissue slide using 14088-1-AP (SREBF1 Antibody) at dilution of 1:50 (under 10x lens).



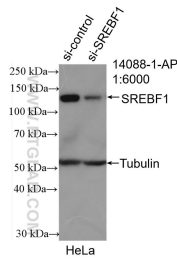
Immunohistochemical analysis of paraffin-embedded human kidney tissue slide using 14088-1-AP (SREBF1 Antibody) at dilution of 1:50 (under 40x lens).



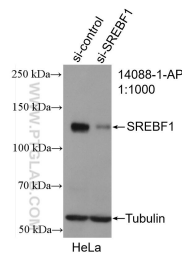
Immunofluorescent analysis of (10% Formaldehyde) fixed HeLa cells using 14088-1-AP (SREBF1 antibody) at dilution of 1:50 and Alexa Fluor 488-conjugated AffiniPure Goat Anti-Rabbit IgG(H+L).



Various lysates were subjected to SDS PAGE followed by western blot with 14088-1-AP (SREBF1 antibody) at dilution of 1:5000 incubated at room temperature for 1.5 hours.



WB result of SREBF1 antibody (14088-1-AP; 1:6000; incubated at room temperature for 1.5 hours) with sh-Control and sh-SREBF1 transfected HeLa cells.



WB result of SREBF1 antibody (14088-1-AP; 1:1000; incubated at room temperature for 1.5 hours) with sh-Control and sh-SREBF1 transfected HeLa cells.