

Nur für Forschungszwecke

# ADAM12 Polyklonaler Antikörper

Katalog-Nr.: 14139-1-AP

Vorgestelltes Produkt

39 Publikationen



## Allgemeine Informationen

**Katalog-Nr.:**

14139-1-AP

**Größe:**

150ul, Konzentration: 600 µg/ml von Nanodrop;

**Wirt:**

Kaninchen

**Isotyp:**

IgG

**Immunogen Katalognummer:**

AG5206

**GenBank-Zugangsnummer:**

BC060804

**GeneID (NCBI):**

8038

**Vollständiger Name:**

ADAM metalloproteinase domain 12

**Berechnete Masse:**

100 kDa

**Beobachtete Masse:**

90-100 kDa, 70-80 kDa

**Reinigungsmethode:**

Antigen-Affinitätsreinigung

**Empfohlene Verdünnungen:**

WB 1:500-1:2000  
IP 0.5-4.0 µg für IP und 1:200-1:1000 für WB  
IHC 1:250-1:1000  
IF 1:50-1:500

## Anwendungen

**Geprüfte Anwendungen:**

IF, IHC, IP, WB, ELISA

**In Publikationen genannte Anwendungen:**

FC, IF, IHC, IP, WB

**Getestete Reaktivität:**

Human, Maus, Ratte

**Zitierte Arten:**

Human, Maus, Ratte

**Positivkontrollen:**

WB: Maushirngewebe, HeLa-Zellen, Mausherzgewebe, MCF-7-Zellen, Rattenhirngewebe

IP: HeLa-Zellen,

IHC: humanes Plazenta-Gewebe, humanes Mammakarzinomgewebe

IF: HepG2-Zellen,

**Hinweis-IHC: Antigendemaskierung mit TE-Puffer pH 9,0 empfohlen. (\*) Wahlweise kann die Antigendemaskierung auch mit Citratpuffer pH 6,0 erfolgen.**

## Hintergrundinformationen

ADAM12, also named as MLTN and Meltrin-alpha, is involved in skeletal muscle regeneration, specifically at the onset of cell fusion. It is also involved in macrophage-derived giant cells (MGC) and osteoclast formation from mononuclear precursors. ADAM12 is expressed in human malignant tumors (PMID:17355265). ADAM12's ability to degrade extracellular matrix components likely allows it to detach cancer cells from the basement membrane and assist them on their route to metastasis. But the protein's role not just as a biomarker of breast cancer but as a gateway to cancer cell migration is only now being understood. ADAM12 has 2 isoforms with the calculated molecular mass of 100 and 80 kDa, and this antibody can recognize all isoforms of ADAM12. ADAM12 has 4 forms: 120kDa full-length form, 90kd mature (processed form that lack the prodomain), 50-68kDa degradation product and 27kDa prodomain.

## Bemerkenswerte Veröffentlichungen

Verfasser	Pubmed ID	Journal	Anwendung
Michal Sobocki	36113462	Cell Stem Cell	IF
Zhuo Zhang	33030286	FEBS Open Bio	WB
Michelle Van Sinderen	26616664	Reprod Fertil Dev	

## Lagerung

**Lagerungsbedingungen:**

Bei -20°C lagern. Nach dem Versand ein Jahr lang stabil

**Lagerungspuffer:**

PBS mit 0.02% Natriumazid und 50% Glycerin pH 7.3.

Aliquotieren ist nicht notwendig bei -20°C Lagerung

\*\*\* 20ul-Größen enthalten 0.1% BSA

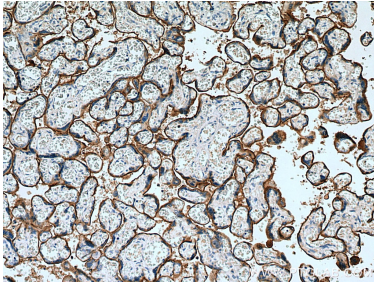
For technical support and original validation data for this product please contact:

T: 1 (888) 4PTGLAB (1-888-478-4522) (toll free in USA), or 1(312) 455-8498 (outside USA)

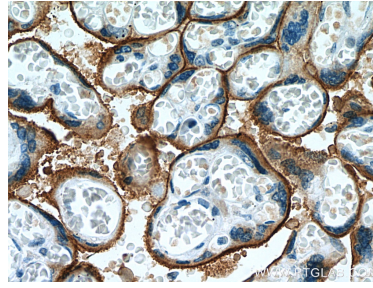
E: proteintech@ptglab.com  
W: ptglab.com

This product is exclusively available under Proteintech Group brand and is not available to purchase from any other manufacturer.

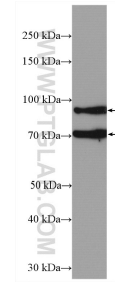
## Ausgewählte Validierungsdaten



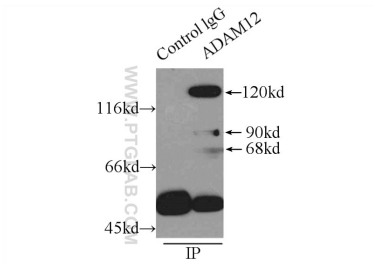
Immunohistochemical analysis of paraffin-embedded human placenta tissue slide using 14139-1-AP (ADAM12 antibody) at dilution of 1:500 (under 10x lens). Heat mediated antigen retrieval with Tris-EDTA buffer (pH 9.0).



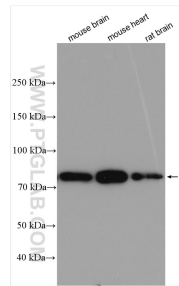
Immunohistochemical analysis of paraffin-embedded human placenta tissue slide using 14139-1-AP (ADAM12 antibody) at dilution of 1:500 (under 40x lens). Heat mediated antigen retrieval with Tris-EDTA buffer (pH 9.0).



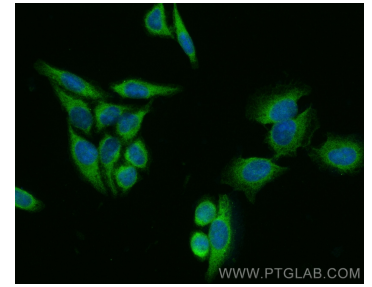
mouse brain tissue were subjected to SDS PAGE followed by western blot with 14139-1-AP (ADAM12 antibody) at dilution of 1:1000 incubated at room temperature for 1.5 hours.



IP Result of anti-ADAM12 (IP:14139-1-AP, 4ug; Detection:14139-1-AP 1:300) with HeLa cells lysate 4650ug.



Various lysates were subjected to SDS PAGE followed by western blot with 14139-1-AP (ADAM12 antibody) at dilution of 1:1000 incubated at room temperature for 1.5 hours.



Immunofluorescent analysis of (-20°C Methanol) fixed HepG2 cells using ADAM12 antibody (14139-1-AP) at dilution of 1:100 and CoraLite®488-Conjugated AffiniPure Goat Anti-Rabbit IgG(H+L).