

Nur für Forschungszwecke

# KRAP/SSFA2 Polyklonaler Antikörper



Katalog-Nr.:14157-1-AP

Vorgestelltes Produkt

5 Publikationen

## Allgemeine Informationen

Katalog-Nr.:

14157-1-AP

Größe:

150ul, Konzentration: 800 µg/ml von

Nanodrop;

Wirt:

Kaninchen

Isotyp:

IgG

Immunogen Katalognummer:

AG5339

GenBank-Zugangsnummer:

BC028706

GeneID (NCBI):

6744

Vollständiger Name:

sperm specific antigen 2

Berechnete Masse:

138 kDa

Beobachtete Masse:

180 kDa

Reinigungsmethode:

Antigen-Affinitätsreinigung

Empfohlene Verdünnungen:

WB 1:500-1:1000

IP 0.5-4.0 µg für IP und 1:500-1:1000

für WB

IF 1:200-1:800

## Anwendungen

Geprüfte Anwendungen:

IF, IP, WB, ELISA

In Publikationen genannte Anwendungen:

CoIP, IF, IHC, WB

Getestete Reaktivität:

Human, Maus, Ratte

Zitierte Arten:

Human, Hund

Positivkontrollen:

WB: Mauslungengewebe, Maushodengewebe, Rattenlungengewebe

IP: Maushodengewebe,

IF: Maus-Pankreasgewebe,

## Hintergrundinformationen

KRAP (Ki-ras-induced actin-interacting protein), also known as SSFA2, CS1 or SPAG13, is a 1,259 amino acid cytoplasmic protein associated with filamentous-actin (F-actin). KRAP is strongly expressed in pancreas and testis. It is also present in colon cancer cell lines, and the expression is up-regulated by activated K-Ras. KRAP-deficient (KO) mice display decreased adiposity and improved glucose metabolism, implicating KRAP as a potential target for the prevention or treatment of obesity and related diseases. KRAP has also been suggested to be a potential target for cancer. This antibody recognizes endogenous KRAP, which migrates with an apparent molecular mass of 180 kDa in SDS-PAGE. (PMID: 14673706; 21501587; 21873152)

## Bemerkenswerte Veröffentlichungen

Verfasser	Pubmed ID	Journal	Anwendung
Dingli Florent F	22946050	J Cell Sci	WB, IF
Akiko Okayama	26947549	J Proteomics	WB,IHC
Nagendra Babu Thillaiappan	34301929	Nat Commun	WB,IHC

## Lagerung

Lagerungsbedingungen:

Bei -20°C lagern. Nach dem Versand ein Jahr lang stabil

Lagerungspuffer:

PBS mit 0.02% Natriumazid und 50% Glycerin pH 7.3.

Aliquotieren ist nicht notwendig bei -20°C Lagerung

\*\*\* 20ul-Größen enthalten 0.1% BSA

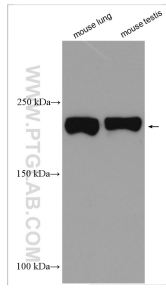
For technical support and original validation data for this product please contact:

T: 1 (888) 4PTGLAB (1-888-478-4522) (toll free in USA), or 1(312) 455-8498 (outside USA)

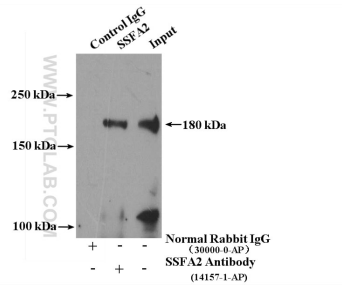
E: proteintech@ptglab.com  
W: ptglab.com

This product is exclusively available under Proteintech Group brand and is not available to purchase from any other manufacturer.

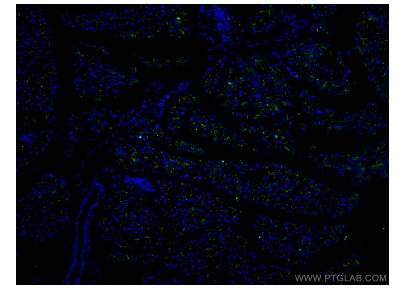
## Ausgewählte Validierungsdaten



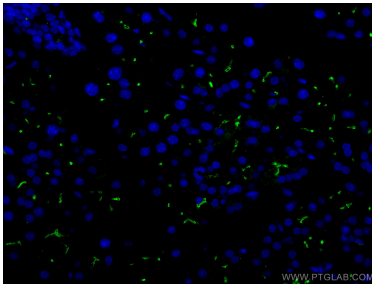
Various lysates were subjected to SDS PAGE followed by western blot with 14157-1-AP (KRAP/SSFA2 antibody) at dilution of 1:600 incubated at room temperature for 1.5 hours.



IP Result of anti-KRAP, SSFA2 (IP:14157-1-AP, 4ug; Detection:14157-1-AP 1:500) with mouse testis tissue lysate 4000ug.



Immunofluorescent analysis of (4% PFA) fixed mouse pancreas tissue using KRAP/SSFA2 antibody (14157-1-AP) at dilution of 1:400 and CoraLite®488-Conjugated AffiniPure Goat Anti-Rabbit IgG(H+L).



Immunofluorescent analysis of (4% PFA) fixed mouse pancreas tissue using KRAP/SSFA2 antibody (14157-1-AP) at dilution of 1:400 and CoraLite®488-Conjugated AffiniPure Goat Anti-Rabbit IgG(H+L).