

Nur für Forschungszwecke

Liprin Alpha 1 Polyklonaler Antikörper



Katalog-Nr.: 14175-1-AP

Vorgestelltes Produkt

21 Publikationen

Allgemeine Informationen

Katalog-Nr.:
14175-1-AP

Größe:
150ul, Konzentration: 500 µg/ml von
Nanodrop und 293 µg/ml durch die
Bradford-Methode mit BSA als
Standard;

Wirt:
Kaninchen

Isotyp:
IgG

Immunogen Katalognummer:
AG5381

GenBank-Zugangsnummer:
BC034046

GeneID (NCBI):
8500

Vollständiger Name:
protein tyrosine phosphatase,
receptor type, f polypeptide (PTPRF),
interacting protein (liprin), alpha 1

Berechnete Masse:
1202 aa, 136 kDa

Beobachtete Masse:
160 kDa

Reinigungsmethode:

Antigen-Affinitätsreinigung

Empfohlene Verdünnungen:

WB 1:500-1:1000
IP 0.5-4.0 µg für IP und 1:500-1:1000
für WB
IHC 1:50-1:500
IF 1:20-1:200

Anwendungen

Geprüfte Anwendungen:

FC, IF, IHC, IP, WB, ELISA

In Publikationen genannte Anwendungen:

IF, IHC, WB

Getestete Reaktivität:

Human, Maus, Ratte

Zitierte Arten:

Affe, Human, Maus

Hinweis-IHC: Antigendemaskierung mit TE-Puffer pH 9,0 empfohlen. (*) Wahlweise kann die Antigendemaskierung auch mit Citratpuffer pH 6,0 erfolgen.

Positivkontrollen:

WB: HeLa-Zellen, MCF-7-Zellen

IP: MCF-7-Zellen,

IHC: humanes Prostatakarzinomgewebe,

IF: HepG2-Zellen,

Hintergrundinformationen

Liprin alpha 1, encoded by the PPF1A1 gene, is a member of the LAR protein-tyrosine phosphatase-interacting protein (liprin) family. Liprins interact with members of LAR family of transmembrane protein tyrosine phosphatases, which are known to be important for axon guidance and mammary gland development. Liprin alpha 1 may regulate the disassembly of focal adhesions and thus help orchestrate cell-matrix interactions (PMID: 7796809). Alternatively spliced transcript variants encoding distinct isoforms have been described.

Bemerkenswerte Veröffentlichungen

Verfasser	Pubmed ID	Journal	Anwendung
Marta Ripamonti	36171301	Commun Biol	WB, IF
Veronica Astro	27659488	Sci Rep	WB, IF
Kristyna Sala	31537859	Sci Rep	IF

Lagerung

Lagerungsbedingungen:

Bei -20°C lagern. Nach dem Versand ein Jahr lang stabil

Lagerungspuffer:

PBS mit 0.02% Natriumazid und 50% Glycerin pH 7.3.

Aliquotieren ist nicht notwendig bei -20°C Lagerung

*** 20ul-Größen enthalten 0.1% BSA

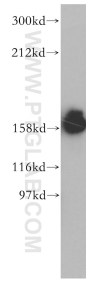
For technical support and original validation data for this product please contact:

T: 1 (888) 4PTGLAB (1-888-478-4522) (toll free
in USA), or 1(312) 455-8498 (outside USA)

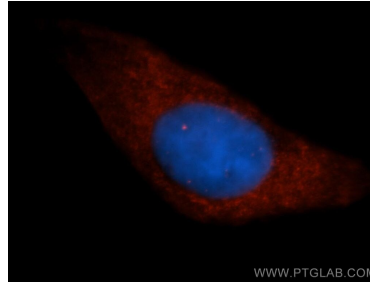
E: proteintech@ptglab.com
W: ptglab.com

This product is exclusively available under Proteintech Group brand and is not available to purchase from any other manufacturer.

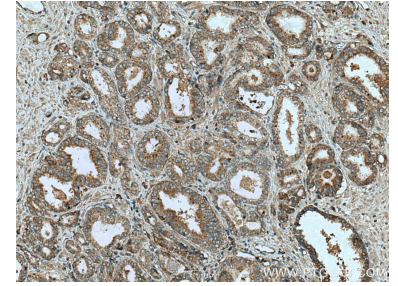
Ausgewählte Validierungsdaten



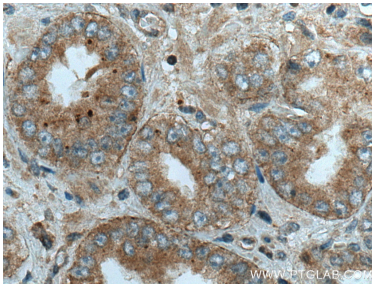
HeLa cells were subjected to SDS PAGE followed by western blot with 14175-1-AP (Liprin alpha 1 antibody) at dilution of 1:500 incubated at room temperature for 1.5 hours.



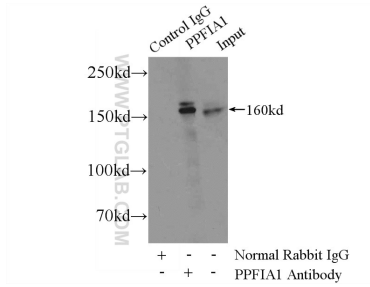
Immunofluorescent analysis of HepG2 cells, using PPF1A1 antibody 14175-1-AP at 1:50 dilution and Rhodamine-labeled goat anti-rabbit IgG (red). Blue pseudocolor = DAPI (fluorescent DNA dye).



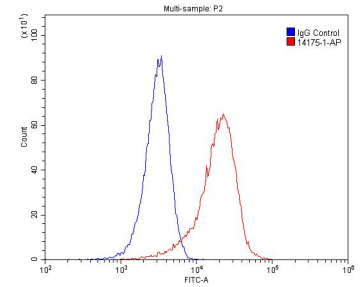
Immunohistochemical analysis of paraffin-embedded human prostate cancer tissue slide using 14175-1-AP (Liprin alpha 1 antibody) at dilution of 1:200 (under 10x lens). Heat mediated antigen retrieval with Tris-EDTA buffer (pH 9.0).



Immunohistochemical analysis of paraffin-embedded human prostate cancer tissue slide using 14175-1-AP (Liprin alpha 1 antibody) at dilution of 1:200 (under 40x lens). Heat mediated antigen retrieval with Tris-EDTA buffer (pH 9.0).



IP Result of anti-Liprin alpha 1 (IP:14175-1-AP, 4ug; Detection:14175-1-AP 1:500) with MCF-7 cells lysate 3200ug.



1X10⁶ HeLa cells were stained with 0.2ug Liprin alpha 1 antibody (14175-1-AP, red) and control antibody (blue). Cells were fixed with 4% PFA and permeabilized with 0.1% Triton X-100. Alexa Fluor 488-conjugated AffiniPure Goat Anti-Rabbit IgG(H+L) with dilution 1:1500.