

Nur für Forschungszwecke

SLC27A6 Polyklonaler Antikörper

Katalog-Nr.:14197-1-AP



Allgemeine Informationen

Katalog-Nr.: 14197-1-AP	GenBank-Zugangsnummer: BC041945	Reinigungsmethode: Antigen-Affinitätsreinigung
Größe: 150ul , Konzentration: 400 µg/ml von Nanodrop;	GeneID (NCBI): 28965	Empfohlene Verdünnungen: WB 1:500-1:2000
Wirt: Kaninchen	Vollständiger Name: solute carrier family 27 (fatty acid transporter), member 6	
Isotyp: IgG	Berechnete Masse: 70 kDa	
Immunogen Katalognummer: AG5400	Beobachtete Masse: 70 kDa	

Anwendungen

Geprüfte Anwendungen: WB, ELISA	Positivkontrollen: WB : MCF-7-Zellen, Maushodengewebe, Mauslebergewebe, Mausnierengewebe
Getestete Reaktivität: Human, Maus	

Hintergrundinformationen

SLC27A6, also known as FATP6, ACSVL2, FACVL2, belongs to the ATP-dependent AMP-binding enzyme family. SLC27A6 mediates the import of long-chain fatty acids (LCFA) into the cell by facilitating their transport at the plasma membrane (PMID: 12556534). SLC27A6 plays a pivotal role in regulating available LCFA substrates from exogenous sources in tissues undergoing high levels of beta-oxidation. SLC27A6 is strongly expressed in heart and localizes to cardiac myocytes. SLC27A6 is expressed at moderate levels in placenta, testis, and adrenal glands(PMID: 12556534).

Lagerung

Lagerungsbedingungen:
Bei -20°C lagern. Nach dem Versand ein Jahr lang stabil
Lagerungspuffer:
PBS mit 0.02% Natriumazid und 50% Glycerin pH 7.3.
Aliquotieren ist nicht notwendig bei -20°C Lagerung

*** 20ul-Größen enthalten 0.1% BSA

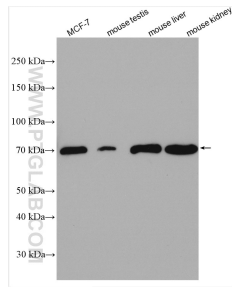
For technical support and original validation data for this product please contact:

T: 1 (888) 4PTGLAB (1-888-478-4522) (toll free in USA), or 1(312) 455-8498 (outside USA)

E: proteintech@ptglab.com
W: ptglab.com

This product is exclusively available under Proteintech Group brand and is not available to purchase from any other manufacturer.

Ausgewählte Validierungsdaten



Various lysates were subjected to SDS PAGE followed by western blot with 14197-1-AP (SLC27A6 antibody) at dilution of 1:1000 incubated at room temperature for 1.5 hours.