

Nur für Forschungszwecke

KChIP1 Polyklonaler Antikörper

Katalog-Nr.: 14212-1-AP



Allgemeine Informationen

Katalog-Nr.:
14212-1-AP

Größe:
150ul, Konzentration: 133 µg/ml
durch die Bradford-Methode mit BSA
als Standard;

Wirt:
Kaninchen

Isotyp:
IgG

Immunogen Katalognummer:
AG5432

GenBank-Zugangsnummer:
BC050375

GeneID (NCBI):
30820

Vollständiger Name:
Kv channel interacting protein 1

Berechnete Masse:
227 aa, 27 kDa

Beobachtete Masse:
25 kDa

Reinigungsmethode:

Antigen-Affinitätsreinigung

Empfohlene Verdünnungen:

WB 1:500-1:2000
IP 0.5-4.0 µg für IP und 1:200-1:1000
für WB
IHC 1:20-1:200

Anwendungen

Geprüfte Anwendungen:
FC, IHC, IP, WB, ELISA

Getestete Reaktivität:
Human

Hinweis-IHC: Antigendemaskierung mit TE-Puffer pH 9,0 empfohlen. (*) Wahlweise kann die Antigendemaskierung auch mit Citratpuffer pH 6,0 erfolgen.

Positivkontrollen:

WB: humanes Cerebellum-Gewebe, humanes Hirngewebe

IP: fetales humanes Hirngewebe,

IHC: humanes Pankreaskarzinomgewebe,

Hintergrundinformationen

Human K(v) channel interacting protein 1 (KCHIP1) is a new member of the neural calcium binding protein superfamily. Members of the KCNIP family are small calcium binding proteins. They all have EF-hand-like domains, and differ from each other in the N-terminus. They are integral subunit components of native Kv4 channel complexes. They may regulate A-type currents, and hence neuronal excitability, in response to changes in intracellular calcium. KCHIP1 is a neuronal calcium sensor protein that is predominantly expressed at GABAergic synapses and it has been related with modulation of K(+) channels, GABAergic transmission and cell death.

Lagerung

Lagerungsbedingungen:

Bei -20°C lagern. Nach dem Versand ein Jahr lang stabil

Lagerungspuffer:

PBS mit 0.02% Natriumazid und 50% Glycerin pH 7.3.

Aliquotieren ist nicht notwendig bei -20°C Lagerung

***** 20ul-Größen enthalten 0.1% BSA**

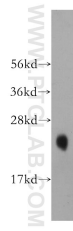
For technical support and original validation data for this product please contact:

T: 1 (888) 4PTGLAB (1-888-478-4522) (toll free in USA), or 1(312) 455-8498 (outside USA)

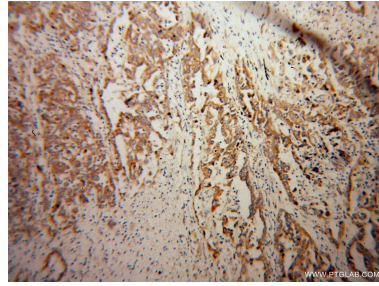
E: proteintech@ptglab.com
W: ptglab.com

This product is exclusively available under Proteintech Group brand and is not available to purchase from any other manufacturer.

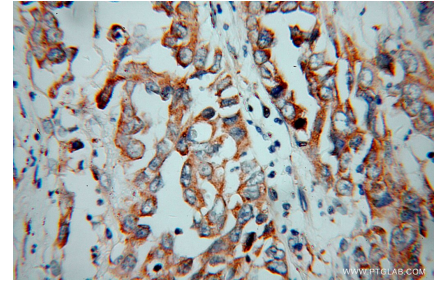
Ausgewählte Validierungsdaten



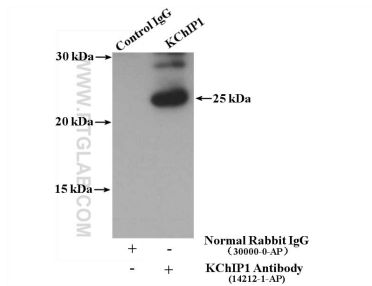
human cerebellum tissue were subjected to SDS PAGE followed by western blot with 14212-1-AP (KChIP1 antibody) at dilution of 1:500 incubated at room temperature for 1.5 hours.



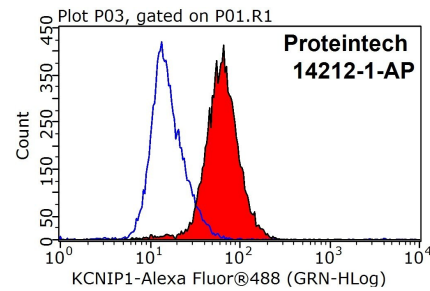
Immunohistochemical analysis of paraffin-embedded human pancreas cancer using 14212-1-AP (KChIP1 antibody) at dilution of 1:100 (under 10x lens).



Immunohistochemical analysis of paraffin-embedded human pancreas cancer using 14212-1-AP (KChIP1 antibody) at dilution of 1:100 (under 40x lens).



IP result of anti-KChIP1 (IP:14212-1-AP, 4ug; Detection:14212-1-AP 1:300) with fetal human brain tissue lysate 3500 ug.



1x10⁶ HepG2 cells were stained with 0.2ug KChIP1 antibody (14212-1-AP, red) and control antibody (blue). Fixed with 90% MeOH blocked with 3% BSA (30 min). Alexa Fluor 488-conjugated AffiniPure Goat Anti-Rabbit IgG(H+L) with dilution 1:1000.