

Nur für Forschungszwecke

ACTN2 Polyklonaler Antikörper

Katalog-Nr.: 14221-1-AP

16 Publikationen



Allgemeine Informationen

Katalog-Nr.: 14221-1-AP	GenBank-Zugangsnummer: BC051770	Reinigungsmethode: Antigen-Affinitätsreinigung
Größe: 150ul, Konzentration: 650 µg/ml von Nanodrop;	GeneID (NCBI): 88	Empfohlene Verdünnungen: WB 1:5000-1:50000 IP 0.5-4.0 µg für IP und 1:500-1:2000 für WB IHC 1:250-1:1000
Wirt: Kaninchen	Vollständiger Name: actinin, alpha 2	
Isotyp: IgG	Berechnete Masse: 104 kDa	
Immunogen Katalognummer: AG5459	Beobachtete Masse: 103 kDa	

Anwendungen

Geprüfte Anwendungen:

IF, IHC, IP, WB, ELISA

In Publikationen genannte Anwendungen:

IF, IHC, WB

Getestete Reaktivität:

Human, Maus, Ratte

Zitierte Arten:

Human, Maus, Ratte

Hinweis-IHC: Antigendemaskierung mit TE-Puffer pH 9,0 empfohlen. (*) Wahlweise kann die Antigendemaskierung auch mit Citratpuffer pH 6,0 erfolgen.

Positivkontrollen:

WB: Maushirngewebe, C2C12-Zellen, Mauslungengewebe, Maus-Skelettmuskelgewebe

IP: HeLa-Zellen,

IHC: Mausherzgewebe, Maus-Skelettmuskelgewebe

Hintergrundinformationen

Alpha actinin 2 (ACTN2) belongs to the alpha-actinin family and is expressed in both skeletal and cardiac muscles and functions to anchor myofibrillar actin thin filaments and titin to Z-discs (PMID: 30701273). ACTN2 is an actin-binding protein with multiple roles in different cell types. In nonmuscle cells, the cytoskeletal isoform is found along microfilament bundles and adherens-type junctions, where it is involved in binding actin to the membrane. In contrast, skeletal, cardiac, and smooth muscle isoforms are localized to the Z disc and analogous dense bodies, where they help anchor the myofibrillar actin filaments. Mutations in ACTN2 are associated with hypertrophic cardiomyopathy, as well as dilated cardiomyopathy and endocardial fibroelastosis (PMID: 20022194, 14567970).

Bemerkenswerte Veröffentlichungen

Verfasser	Pubmed ID	Journal	Anwendung
Xueling He	28969971	Prog Biophys Mol Biol	WB
Maike Schuldt	33148509	J Mol Cell Cardiol	IF
Qianqian Liang	36413948	Dev Cell	IF

Lagerung

Lagerungsbedingungen:

Bei -20°C lagern. Nach dem Versand ein Jahr lang stabil

Lagerungspuffer:

PBS mit 0.02% Natriumazid und 50% Glycerin pH 7.3.

Aliquotieren ist nicht notwendig bei -20°C Lagerung

*** 20ul-Größen enthalten 0.1% BSA

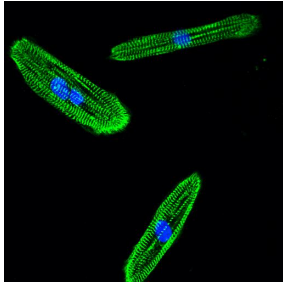
For technical support and original validation data for this product please contact:

T: 1 (888) 4PTGLAB (1-888-478-4522) (toll free in USA), or 1(312) 455-8498 (outside USA)

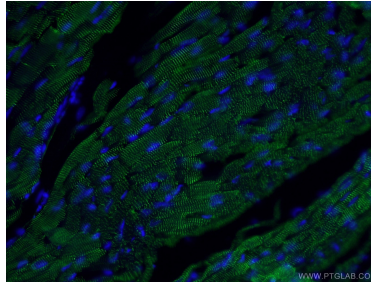
E: proteintech@ptglab.com
W: ptglab.com

This product is exclusively available under Proteintech Group brand and is not available to purchase from any other manufacturer.

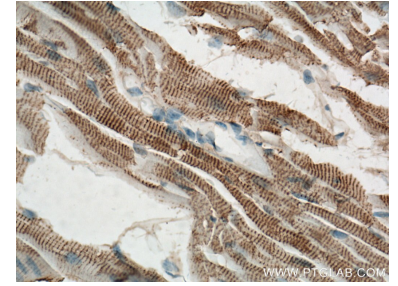
Ausgewählte Validierungsdaten



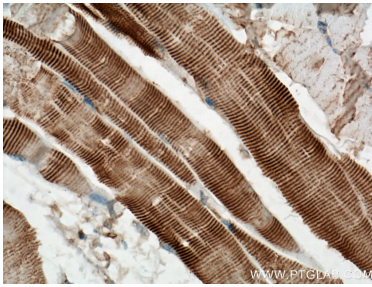
Human iPSC derived cardiomyocyte in 2D culture, with alpha actinin (14221-1-AP) and DAPI. Image courtesy of Chandan Kadir Nagaraju, Experimental Cardiology, KU Leuven, Belgium.



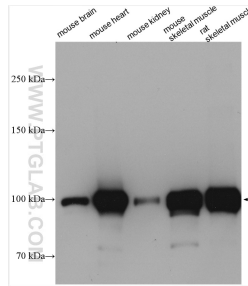
Immunofluorescent analysis of (4% PFA) fixed mouse heart tissue using 14221-1-AP (ACTN2 antibody) at dilution of 1:400 and Alexa Fluor 488-Conjugated AffiniPure Goat Anti-Rabbit IgG(H+L).



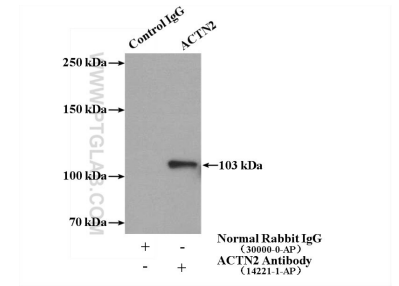
Immunohistochemical analysis of paraffin-embedded mouse heart tissue slide using 14221-1-AP (ACTN2 antibody) at dilution of 1:500 (under 40x lens. Heat mediated antigen retrieval with Tris-EDTA buffer (pH 9.0).



Immunohistochemical analysis of paraffin-embedded mouse skeletal muscle tissue slide using 14221-1-AP (ACTN2 antibody) at dilution of 1:500 (under 40x lens. Heat mediated antigen retrieval with Tris-EDTA buffer (pH 9.0).



Various lysates were subjected to SDS PAGE followed by western blot with 14221-1-AP (ACTN2 antibody) at dilution of 1:30000 incubated at room temperature for 1.5 hours.



IP Result of anti-ACTN2 (IP:14221-1-AP, 4ug; Detection:14221-1-AP 1:1000) with HeLa cells lysate 1080ug.