

Nur für Forschungszwecke

Autotaxin Polyklonaler Antikörper

Katalog-Nr.: 14243-1-AP

6 Publikationen



Allgemeine Informationen

Katalog-Nr.:
14243-1-AP

Größe:
150ul, Konzentration: 500 µg/ml von
Nanodrop und 333 µg/ml durch die
Bradford-Methode mit BSA als
Standard;

Wirt:
Kaninchen

Isotyp:
IgG

Immunogen Katalognummer:
AG5499

GenBank-Zugangsnummer:
BC034961

GeneID (NCBI):
5168

Vollständiger Name:
ectonucleotide
pyrophosphatase/phosphodiesterase
2

Berechnete Masse:
99 kDa

Beobachtete Masse:
100-110 kDa

Reinigungsmethode:
Antigen-Affinitätsreinigung

Empfohlene Verdünnungen:
WB 1:500-1:2000
IP 0.5-4.0 µg für IP und 1:500-1:1000
für WB
IHC 1:20-1:200

Anwendungen

Geprüfte Anwendungen:

IHC, IP, WB, ELISA

In Publikationen genannte Anwendungen:

IHC, WB

Getestete Reaktivität:

Human, Maus, Ratte

Zitierte Arten:

Human, Maus, Ratte

Hinweis-IHC: Antigendemaskierung mit TE-Puffer pH 9,0 empfohlen. (*) Wahlweise kann die Antigendemaskierung auch mit Citratpuffer pH 6,0 erfolgen.

Positivkontrollen:

WB: Maushirngewebe, humanes Plazenta-Gewebe, Mausnierengewebe, Rattenhirngewebe

IP: Maushirngewebe,

IHC: humanes Leberkarzinomgewebe, humanes Dünndarmgewebe

Hintergrundinformationen

ENPP2, Autotaxin or Extracellular lysophospholipase D, is a 863 amino acid secreted protein, which is detected in blood plasma (at protein level) (PubMed:12176993, PubMed:26371182). ENPP2 is Predominantly expressed in brain, placenta, ovary, and small intestine. ENPP2 is expressed in a number of carcinomas such as hepatocellular and prostate carcinoma, neuroblastoma and non-small-cell lung cancer. ENPP2 is expressed in body fluids such as plasma, cerebral spinal fluid (CSF), saliva, follicular and amniotic fluids. The calculated molecular weight of ENPP2 is about 100 kDa (PMID: 22301782), but modified ENPP2 is 120 kDa (PMID: 19808661). ENPP2 Hydrolyzes lysophospholipids to produce the signaling molecule lysophosphatidic acid (LPA) in extracellular fluids (PubMed:15769751, PubMed:26371182, PubMed:27754931).

Bemerkenswerte Veröffentlichungen

Verfasser	Pubmed ID	Journal	Anwendung
Yongjie Jin	34685560	Cells	WB
Gang Ren	36090480	Mol Ther Oncolytics	WB
Fangbo Xia	29950994	Front Pharmacol	WB

Lagerung

Lagerungsbedingungen:

Bei -20°C lagern. Nach dem Versand ein Jahr lang stabil

Lagerungspuffer:

PBS mit 0.02% Natriumazid und 50% Glycerin pH 7.3.

Aliquotieren ist nicht notwendig bei -20°C Lagerung

*** 20ul-Größen enthalten 0.1% BSA

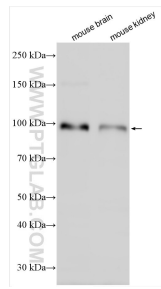
For technical support and original validation data for this product please contact:

T: 1 (888) 4PTGLAB (1-888-478-4522) (toll free in USA), or 1(312) 455-8498 (outside USA)

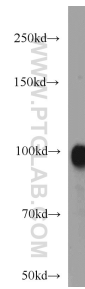
E: proteintech@ptglab.com
W: ptglab.com

This product is exclusively available under Proteintech Group brand and is not available to purchase from any other manufacturer.

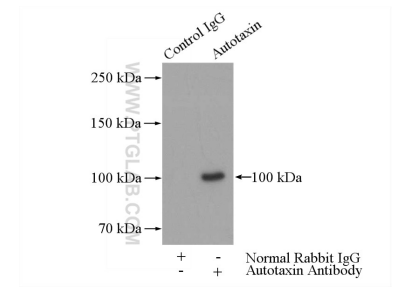
Ausgewählte Validierungsdaten



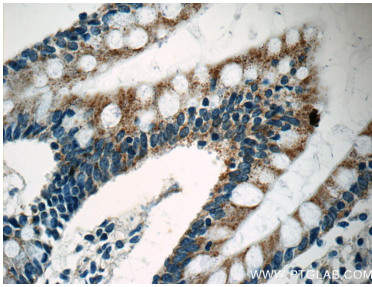
Various lysates were subjected to SDS PAGE followed by western blot with 14243-1-AP (Autotaxin antibody) at dilution of 1:1000 incubated at room temperature for 1.5 hours.



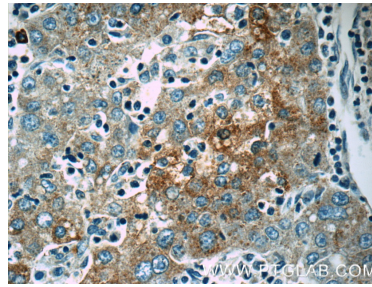
mouse brain tissue were subjected to SDS PAGE followed by western blot with 14243-1-AP (Autotaxin antibody) at dilution of 1:500 incubated at room temperature for 1.5 hours.



IP Result of anti-Autotaxin (IP:14243-1-AP, 5ug; Detection:14243-1-AP 1:500) with mouse brain tissue lysate 4000ug.



Immunohistochemical analysis of paraffin-embedded human small intestine tissue slide using 14243-1-AP (Autotaxin antibody at dilution of 1:50).



Immunohistochemical analysis of paraffin-embedded human liver cancer tissue slide using 14243-1-AP (Autotaxin antibody at dilution of 1:50 (under 40x lens).