

Nur für Forschungszwecke

COG6 Polyklonaler Antikörper

Katalog-Nr.:14277-1-AP



Allgemeine Informationen

| | | |
|---|--|---|
| Katalog-Nr.: 14277-1-AP | GenBank-Zugangsnummer: BC051723 | Reinigungsmethode: Antigen-Affinitätsreinigung |
| Größe: 150ul, Konzentration: 600 µg/ml von Nanodrop; | GeneID (NCBI): 57511 | Empfohlene Verdünnungen: WB 1:500-1:2000 IF 1:10-1:100 |
| Wirt: Kaninchen | Vollständiger Name: component of oligomeric golgi complex 6 | |
| Isotyp: IgG | Berechnete Masse: 73 kDa | |
| Immunogen Katalognummer: AG5624 | Beobachtete Masse: 73 kDa | |

Anwendungen

Geprüfte Anwendungen:
FC, IF, WB, ELISA

Getestete Reaktivität:
Human, Maus, Ratte

Positivkontrollen:

WB : humanes Hirngewebe, HEK-293-Zellen, HeLa-Zellen, HepG2-Zellen, Jurkat-Zellen, NIH/3T3-Zellen

IF : MCF-7-Zellen, HeLa-Zellen

Hintergrundinformationen

Lagerung

Lagerungsbedingungen:
Bei -20°C lagern. Nach dem Versand ein Jahr lang stabil

Lagerungspuffer:
PBS mit 0.02% Natriumazid und 50% Glycerin pH 7.3.

Aliquotieren ist nicht notwendig bei -20°C Lagerung

***** 20ul-Größen enthalten 0.1% BSA**

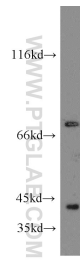
For technical support and original validation data for this product please contact:

T: 1 (888) 4PTGLAB (1-888-478-4522) (toll free
in USA), or 1(312) 455-8498 (outside USA)

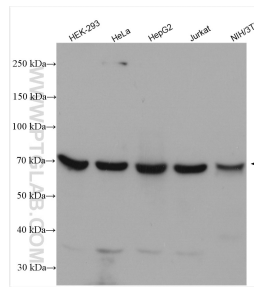
E: proteintech@ptglab.com
W: ptglab.com

This product is exclusively available under Proteintech Group brand and is not available to purchase from any other manufacturer.

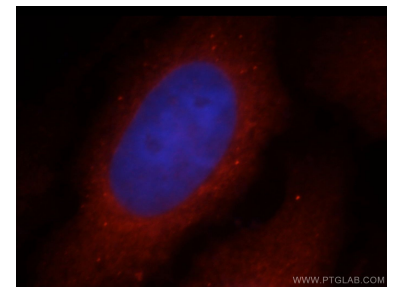
Ausgewählte Validierungsdaten



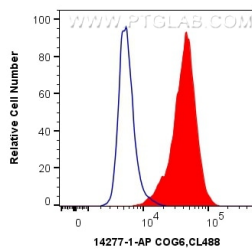
human brain tissue were subjected to SDS PAGE followed by western blot with 14277-1-AP (COG6 antibody) at dilution of 1:300 incubated at room temperature for 1.5 hours.



Various lysates were subjected to SDS PAGE followed by western blot with 14277-1-AP (COG6 antibody) at dilution of 1:2000 incubated at room temperature for 1.5 hours.



Immunofluorescent analysis of MCF-7 cells, using COG6 antibody 14277-1-AP at 1:25 dilution and Rhodamine-labeled goat anti-rabbit IgG (red). Blue pseudocolor = DAPI (fluorescent DNA dye).



1X10⁶ HeLa cells were intracellularly stained with 0.4 ug Anti-Human COG6 (14277-1-AP) and CoraLite®488-Conjugated AffiniPure Goat Anti-Rabbit IgG(H+L) at dilution 1:1000 (red), or 0.4 ug Control Antibody. Cells were fixed with 4% PFA and permeabilized with Flow Cytometry Perm Buffer (PF00011-C).