

Allgemeine Informationen

Katalog-Nr.: 14291-1-AP	GenBank-Zugangsnummer: BC047752	Reinigungsmethode: Antigen-Affinitätsreinigung
Größe: 150ul , Konzentration: 300 µg/ml von Nanodrop und 167 µg/ml durch die Bradford-Methode mit BSA als Standard;	GeneID (NCBI): 5972	Empfohlene Verdünnungen: WB 1:500-1:2000 IHC 1:400-1:1600 IF 1:20-1:200
Wirt: Kaninchen	Vollständiger Name: renin	
Isotyp: IgG	Berechnete Masse: 45 kDa	
Immunogen Katalognummer: AG5612	Beobachtete Masse: 38-47 kDa	

Anwendungen

Geprüfte Anwendungen: IF, IHC, WB, ELISA	Positivkontrollen: WB : Rattennierengewebe, Mausherzgewebe
In Publikationen genannte Anwendungen: IF, IHC, WB	IHC : humanes Nierengewebe, humanes Gliomgewebe, Mausnierengewebe
Getestete Reaktivität: Human, Maus, Ratte	IF : HepG2-Zellen,
Zitierte Arten: Human, Maus, Ratte	

Hinweis-IHC: Antigendemaskierung mit TE-Puffer pH 9,0 empfohlen. (*) Wahlweise kann die Antigendemaskierung auch mit Citratpuffer pH 6,0 erfolgen.

Hintergrundinformationen

REN(Renin) is also named as angiotensinogenase and belongs to the peptidase A1 family. It is a highly specific endopeptidase, whose only known function is to generate angiotensin I from angiotensinogen in the plasma, initiating a cascade of reactions that produce an elevation of blood pressure and increased sodium retention by the kidney. Human prorenin and renin are synthesized in juxtaglomerular cells and it locates in the juxtaglomerular cells and afferent arteriole as cytoplasmic granules (PMID:19664745, 9453303). REN has 2 isoforms produced by alternative splicing with the molecular weight of 45-47kDa. The mature REN can be detected as 38-42 kDa due to the cleavage of signal peptide and propeptide, and also detected as 55-60 kDa with variable degrees of glycosylation (PMID: 20966072, 15226276). Defects in REN are a cause of renal tubular dysgenesis (RTD) and familial juvenile hyperuricemic nephropathy type 2 (HNFJ2).

Bemerkenswerte Veröffentlichungen

Verfasser	Pubmed ID	Journal	Anwendung
Eriko Negishi	30256128	Am J Physiol Renal Physiol	WB
Hadrien-Gaël Boyer	29084882	Hypertension	IHC
Brasilina Caroccia	29066763	Sci Rep	IHC

Lagerung

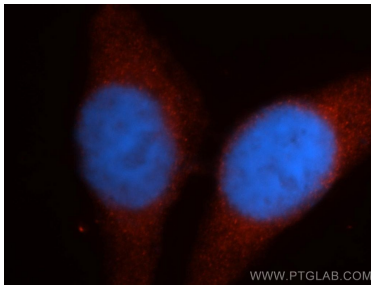
Lagerungsbedingungen:
Bei -20°C lagern. Nach dem Versand ein Jahr lang stabil
Lagerungspuffer:
PBS mit 0.02% Natriumazid und 50% Glycerin pH 7.3.
 Aliquotieren ist nicht notwendig bei -20°C Lagerung

***** 20ul-Größen enthalten 0.1% BSA**

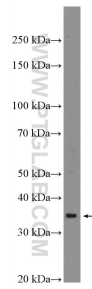
For technical support and original validation data for this product please contact:
 T: 1 (888) 4PTGLAB (1-888-478-4522) (toll free in USA), or 1(312) 455-8498 (outside USA)
 E: proteintech@ptglab.com
 W: ptglab.com

This product is exclusively available under Proteintech Group brand and is not available to purchase from any other manufacturer.

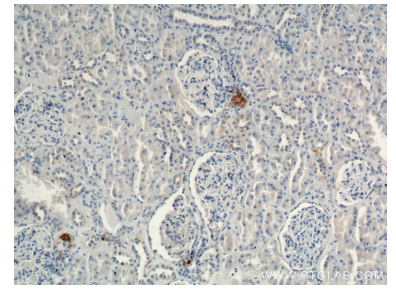
Ausgewählte Validierungsdaten



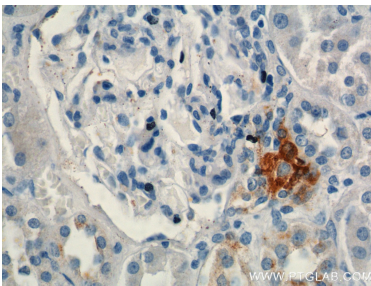
Immunofluorescent analysis of HepG2 cells, using REN antibody 14291-1-AP at 1:50 dilution and Rhodamine-labeled goat anti-rabbit IgG (red). Blue pseudocolor = DAPI (fluorescent DNA dye).



rat kidney tissue were subjected to SDS PAGE followed by western blot with 14291-1-AP (Renin antibody at dilution of 1:1000 incubated at room temperature for 1.5 hours).



Immunohistochemical analysis of paraffin-embedded human kidney tissue slide using 14291-1-AP (Renin antibody at dilution of 1:800 (under 10x lens).



Immunohistochemical analysis of paraffin-embedded human kidney tissue slide using 14291-1-AP (Renin antibody at dilution of 1:800 (under 40x lens).