

Nur für Forschungszwecke

# CHST15 Polyklonaler Antikörper

Katalog-Nr.:14298-1-AP

Vorgestelltes Produkt

3 Publikationen



## Allgemeine Informationen

<b>Katalog-Nr.:</b> 14298-1-AP	<b>GenBank-Zugangsnummer:</b> BC050540	<b>Reinigungsmethode:</b> Antigen-Affinitätsreinigung
<b>Größe:</b> 150ul, Konzentration: 500 µg/ml von Nanodrop;	<b>GeneID (NCBI):</b> 51363	<b>Empfohlene Verdünnungen:</b> WB 1:1000-1:4000 IP 0.5-4.0 µg für IP und 1:500-1:1000 für WB
<b>Wirt:</b> Kaninchen	<b>Vollständiger Name:</b> carbohydrate (N-acetylgalactosamine 4-sulfate 6-O) sulfotransferase 15	
<b>Isotyp:</b> IgG	<b>Berechnete Masse:</b> 65 kDa	
<b>Immunogen Katalognummer:</b> AG5679	<b>Beobachtete Masse:</b> 49 kDa, 69 kDa	

## Anwendungen

<b>Geprüfte Anwendungen:</b> IP, WB, ELISA	<b>Positivkontrollen:</b> WB : Jurkat-Zellen, Mausherzgewebe, Mausmilzgewebe, Raji-Zellen, Rattenherzgewebe, U-937-Zellen IP : Raji-Zellen,
<b>In Publikationen genannte Anwendungen:</b> IF, IHC, WB	
<b>Getestete Reaktivität:</b> Human, Maus, Ratte	
<b>Zitierte Arten:</b> Human, Maus	

## Hintergrundinformationen

Carbohydrate sulfotransferase 15, also known as CHST15, BRAG, GALNAC4S6ST and KIAA0598, is a single-pass type II membrane protein which belongs to the sulfotransferase 1 family. CHST15 is a sulfotransferase that transfers sulfate from 3'-phosphoadenosine 5'-phosphosulfate (PAPS) to the C-6 hydroxyl group of the GalNAc 4-sulfate residue of chondroitin sulfate A and forms chondroitin sulfate E containing GlcA-GalNAc(4,6-SO<sub>4</sub>) repeating units. It also transfers sulfate to a unique non-reducing terminal sequence, GalNAc(4SO<sub>4</sub>)-GlcA(2SO<sub>4</sub>)-GalNAc(6SO<sub>4</sub>), to yield a highly sulfated structure similar to the structure found in thrombomodulin chondroitin sulfate. CHST15 may also act as a B-cell receptor involved in BCR ligation-mediated early activation that mediate regulatory signals key to B-cell development and / or regulation of B-cell-specific RAG expression. CHST15 is expressed in B-cell-enriched tissues but not in fetal or adult thymus. It is expressed in fetal and adult spleen, lymph node, tonsil, bone marrow and peripheral leukocytes. It can be detected as 49 kDa and 69 kDa.

## Bemerkenswerte Veröffentlichungen

Verfasser	Pubmed ID	Journal	Anwendung
Matthew R Blake	35604022	Elife	WB
Mingxiu Luo	24857976	Osteoarthritis Cartilage	IHC
Yang Sun	35434026	Ann Transl Med	IF

## Lagerung

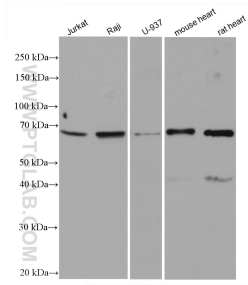
**Lagerungsbedingungen:**  
Bei -20°C lagern. Nach dem Versand ein Jahr lang stabil  
**Lagerungspuffer:**  
PBS mit 0.02% Natriumazid und 50% Glycerin pH 7.3.  
Aliquotieren ist nicht notwendig bei -20°C Lagerung

\*\*\* 20ul-Größen enthalten 0.1% BSA

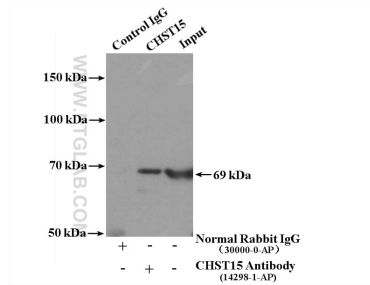
For technical support and original validation data for this product please contact:  
T: 1 (888) 4PTGLAB (1-888-478-4522) (toll free in USA), or 1(312) 455-8498 (outside USA)  
E: proteintech@ptglab.com  
W: ptglab.com

This product is exclusively available under Proteintech Group brand and is not available to purchase from any other manufacturer.

## Ausgewählte Validierungsdaten



Various lysates were subjected to SDS PAGE followed by western blot with 14298-1-AP (CHST15 antibody) at dilution of 1:2000 incubated at room temperature for 1.5 hours.



IP Result of anti-CHST15 (IP:14298-1-AP, 4ug; Detection:14298-1-AP 1:500) with Raji cells lysate 3200ug.