

Nur für Forschungszwecke

SLC38A3 Polyklonaler Antikörper

Katalog-Nr.: 14315-1-AP

Vorgestelltes Produkt

16 Publikationen



Allgemeine Informationen

Katalog-Nr.: 14315-1-AP	GenBank-Zugangsnummer: BC042875	Reinigungsmethode: Antigen-Affinitätsreinigung
Größe: 150ul, Konzentration: 350 µg/ml von Nanodrop;	GeneID (NCBI): 10991	Empfohlene Verdünnungen: WB 1:500-1:2400 IP 0.5-4.0 µg für IP und 1:500-1:2000 für WB
Wirt: Kaninchen	Vollständiger Name: solute carrier family 38, member 3	IHC 1:20-1:200 IF 1:50-1:500
Isotyp: IgG	Berechnete Masse: 504 aa, 56 kDa	
Immunogen Katalognummer: AG5553	Beobachtete Masse: 65-70 kDa	

Anwendungen

Geprüfte Anwendungen:
FC, IF, IHC, IP, WB, ELISA

In Publikationen genannte Anwendungen:
CoIP, IF, IHC, IP, WB

Getestete Reaktivität:
Human, Maus, Ratte

Zitierte Arten:
Human, Maus

Hinweis-IHC: Antigenmaskierung mit TE-Puffer pH 9,0 empfohlen. (*) Wahlweise kann die Antigenmaskierung auch mit Citratpuffer pH 6,0 erfolgen.

Positivkontrollen:

WB: HeLa-Zellen, BGC-823-Zellen, HEK-293-Zellen, humanes Herzgewebe, Maushirngewebe, Mauslebergewebe, Maus-Pankreasgewebe, Raji-Zellen

IP: Mausherzgewebe,

IHC: humanes Lungenkarzinomgewebe,

IF: HEK-293-Zellen,

Hintergrundinformationen

SLC38A3, also known as SNAT3 or SN1, belongs to the SLC38 family of sodium-coupled neutral amino acid transporters. SLC38A3 mediates glutamine transport with sodium and proton coupled manner, and it contributes to ammonia metabolism in the liver and brain. SLC38A3 is highly expressed in the liver and brain astrocytes, with modest expression in the kidney, heart, and muscle. SLC38A3 may migrate higher than the predicted 56 kDa due to the glycosylation.

Bemerkenswerte Veröffentlichungen

Verfasser	Pubmed ID	Journal	Anwendung
Heather M Sosnoski	33199267	Neurochem Int	WB
Katarzyna Dąbrowska	34681893	Int J Mol Sci	WB, IF, CoIP
Magdalena Zielińska	26442479	J Neurochem	WB

Lagerung

Lagerungsbedingungen:

Bei -20°C lagern. Nach dem Versand ein Jahr lang stabil

Lagerungspuffer:

PBS mit 0.02% Natriumazid und 50% Glycerin pH 7.3.

Aliquotieren ist nicht notwendig bei -20°C Lagerung

*** 20ul-Größen enthalten 0.1% BSA

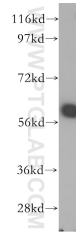
For technical support and original validation data for this product please contact:

T: 1 (888) 4PTGLAB (1-888-478-4522) (toll free in USA), or 1(312) 455-8498 (outside USA)

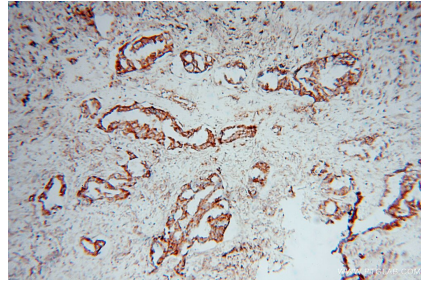
E: proteintech@ptglab.com
W: ptglab.com

This product is exclusively available under Proteintech Group brand and is not available to purchase from any other manufacturer.

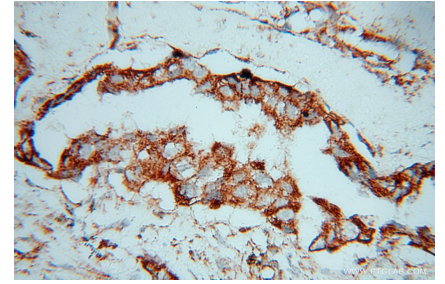
Ausgewählte Validierungsdaten



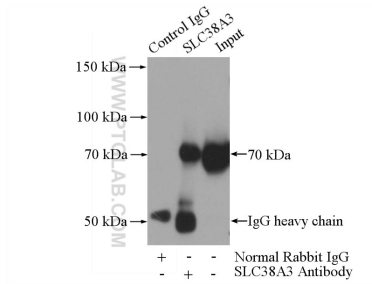
HeLa cells were subjected to SDS PAGE followed by western blot with 14315-1-AP (SLC38A3 antibody) at dilution of 1:400 incubated at room temperature for 1.5 hours.



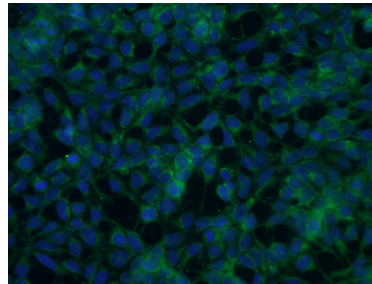
Immunohistochemical analysis of paraffin-embedded human lung cancer using 14315-1-AP (SLC38A3 antibody) at dilution of 1:100 (under 10x lens).



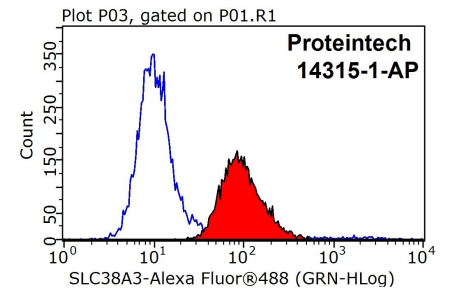
Immunohistochemical analysis of paraffin-embedded human lung cancer using 14315-1-AP (SLC38A3 antibody) at dilution of 1:100 (under 40x lens).



IP Result of anti-SLC38A3 (IP:14315-1-AP, 3ug; Detection:14315-1-AP 1:1000) with mouse heart tissue lysate 4000ug.



Immunofluorescent analysis of (-20°C Ethanol) fixed HEK-293 cells using 14315-1-AP (SLC38A3 antibody) at dilution of 1:50 and Alexa Fluor 488-conjugated AffiniPure Goat Anti-Rabbit IgG(H+L).



1X10⁶ HeLa cells were stained with 0.2ug SLC38A3 antibody (14315-1-AP, red) and control antibody (blue). Fixed with 90% MeOH blocked with 3% BSA (30 min). Alexa Fluor 488-conjugated AffiniPure Goat Anti-Rabbit IgG(H+L) with dilution 1:1000.